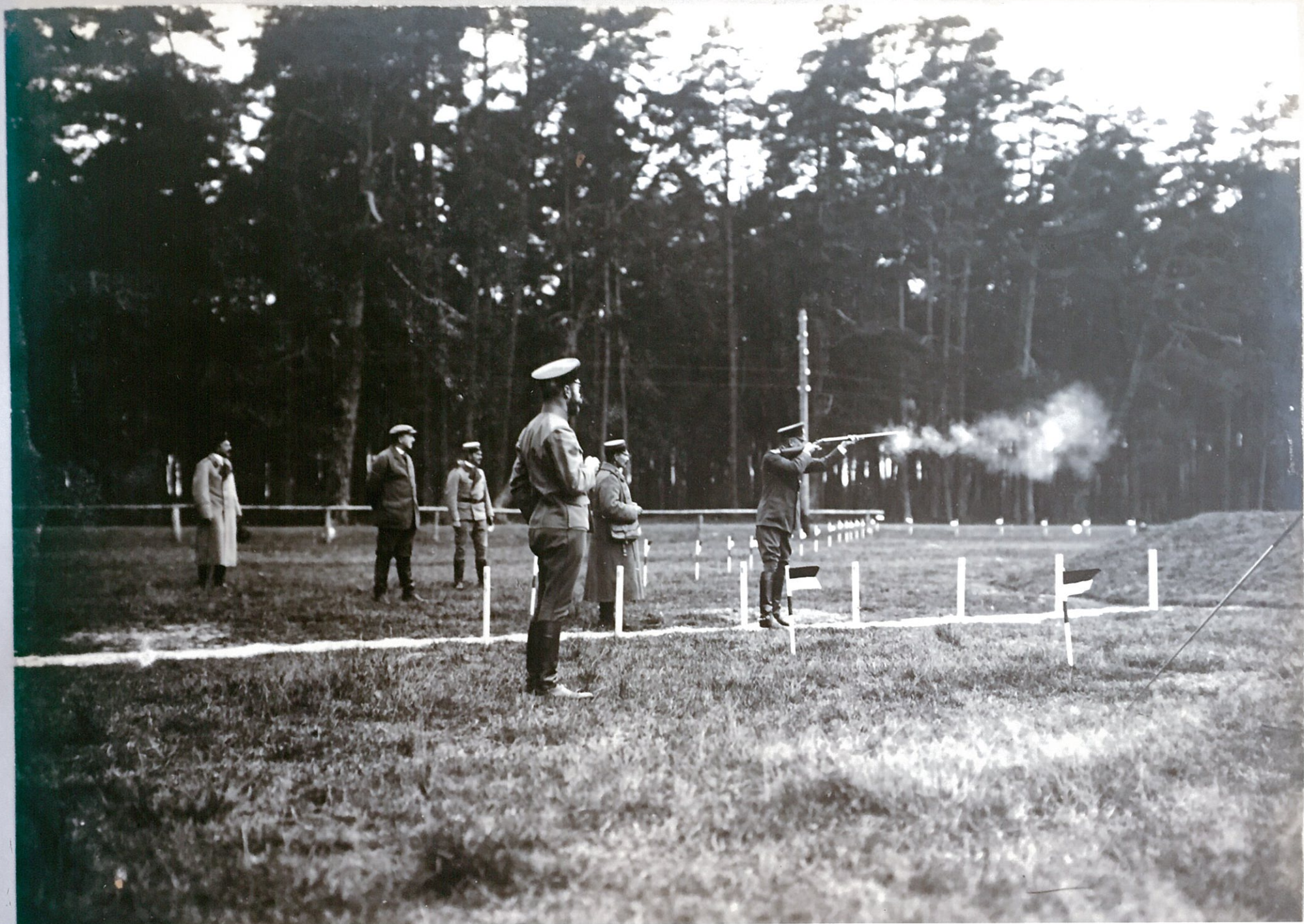


Създа на 1912 г., Спала.



1910 Belloselsky

22639

12 bore Royal hammerless "A B"
ejector top lever top safety
L. good bryl. 30 Steel bands
R. good bryl. Special vit. b.

Blnd $2\frac{5}{8} + 1\frac{7}{8} + 1\frac{3}{8}$

Length $15\frac{1}{8}$

Cast off $\frac{1}{4} + \frac{3}{16} + \frac{1}{8} + \frac{1}{4}$ toe

Weight of gun 6.9

" of bands $3.0\frac{1}{4}$

Pulls $4 + 4\frac{1}{2}$

striking $40 + 33$

Finished at Factory 13/1/10

Shot & regulated 4/10/1900
with 42 gms Schultze 1/16000 b.
L. R.

—134 134

—138 144

—133 131

—128 138

—140 132

—132 140

— = 134 = 136