



**EDWARD E. ULRICH**  
OLIN WINCHESTER REPEATING  
ARMS CO RETIRED

MEMBER  
W.A.C.A.  
C.A.D.A.

5 AZALEA LANE  
WINDHAM, MAINE U.S.A. 04062

(207) 892-2726  
FAX (207) 892-0869

May 8, 2008

Mr. Eric R. Lane  
7757 Dove Haven Court  
Baton Rouge, LA 70809-1279

Dear Eric,

In regard to Winchester Model 21s, specifically S.Ns. W33100 and W33101, which were built in the 1980s. Both Model 21s were originally conceived to be part of a Model 21-5Gauge Set consisting of 12, 16, 20, 28 and 410 gauges. However, at the time that I had the 12, 16 and 20 gauges made, Winchester could not build the 28-410 gauge-set for me. The reason being, that I had insisted on consecutive serial numbers to follow the 12, 16 and 20 numbers. Consequently, the project was put on hold.

A couple of years later, Winchester was able to provide me with the consecutive serial numbers, 33100 and 33101 but not in sequence with the original 3-gauge set. So, I continued the project with help from both Winchester and Connecticut Shotgun Manufacturing Company. I was also fortunate enough to have Nick Kusmit, Winchester Master Engraver, Retired, do the same pattern as was on the original M21-3gauge set. The wood work was done by John Durkin, Winchester Master Wood Carver, Retired. So, the 2 Model 21s with the S.N. W33100 and S.N. W33101 are listed with the specifications on a separate sheet.

I hope this explains everything to your satisfaction.

Sincerely truly,

Edward E. Ulrich  
Winchester Repeating Arms Co., Retired

SPECIAL GUNS FINAL INSPECTION REPORT  
 NB-5555

MODEL **MG21CGWV** ORDER NUMBER **34-022-A15205A** DATE **2/18/70** *Ed. Kishinsky*  
 CHARGE SYMBOL **3011-000-1162** M/21 Custom Grade 20 ga 28 inch DATE PROMISED

DESCRIPTION OF GUNS ORDERED  
**Win SKEET Right #1 Left Win SKEET #2 Front Sight Ivory Bone Mid**

**Sight Ivory Bone (No Engraving) Custom Built By Win (No Name) 3 inch**

**Chamber VR Non Auto Safety Straight Grip Stock Chuck Wood Butt Carving 21A**

**SKEET Style Beaver Tail** INSPECTOR MUST COMPLETE SECTION BELOW **Carving 21A**  
 SHOTGUN NO. **33800** PATTERN AVE. R.H. BARREL SHEET #1 **1 1/2 Left - 1/2 low 69%** L.H. BARREL SHEET #2 **1-0 Right - 1-0 low 80%**  
 TEMPERATURE BAROMETER LOAD

ACCURACY SINGLE BARREL R.H. L.H. SHOT BY  
 FUNCTION OF ACTION RIFLE NO. TARGETED WITH (VOLUME & KINDS OF LOAD) AT (NO. YDS.) FEET  
 GROUP AVE.

CONDITION INSIDE  BORE DIAMETER  RIFLING DIAMETER  
 NO RING BORES OR SCRATCHES VISIBLE FROM FRONT END  
 SIGHTS - CONDITION - GENERAL ALIGNMENT - RIB STRAIGHT  LEADING  
 STANDING BREECH - BBLs. FLUSH BOTH SIDES  WATER TABLE FIT

STOCK BUTT PLATE SHAPE PITCH  
 LENGTH OF PULL **14** DROP OF HEEL **2 1/4** DROP OF COMB **1 1/2** WIDTH OF COMB **Medium**

FORE-END SHAPE GRADE OF WOOD  SELECTIVE EJECTION EQUALLY TIMED  
 CHECKERING  FINISH  FIT

TRIGGER  WEIGHT TRIGGER FULL-SINGLE R.H. L.H.  
 CREEP  COCKING  EVEN LATE EARLY  
 TAKE DOWN  FINISH METAL PARTS

REMARKS  
*JK Feb 4/28/70*  
**DAC - NOT AVAILABLE** **LSJ 4/28/70**

INSPECTOR (SIGNATURE) **Burdette R Colburn** DATE **4-28-70**  
**33800**



## EDWARD E. ULRICH

OLIN WINCHESTER REPEATING  
ARMS CO RETIRED

MEMBER  
W.A.C.A.  
C.A.D.A.

5 AZALEA LANE  
WINDHAM, MAINE U.S.A. 04062

(207) 892-2726  
FAX (207) 892-0869

### **SPECIFICATIONS-WINCHESTER MODEL 21-S.N. W33100:**

28 Gauge-Grand American	28 Gauge-Extra Barrel
26" Barrel	26" Length of Barrel
2-3/4" Chambers	2-3/4" Chambers
Right Barrel-Cylinder	Right Barrel-Improved Cylinder
Left Barrel-Modified	Left Barrel-Modified
Vent Rib	
Automatic Safety	
Single Selective Trigger	
Straight Grip Stock	
Red Ivory Front Bead	
Skeet Style Beavertail	
21-B Caring for Forearm and Stock	
Checked Butt	
14-1/2" Pull, Drop At Heel 2-1/4", Drop At Comb 1-1/2"	
Medium Width Comb	

### **SPECIFICATION-WINCHESTER MODEL 21-S.N. W33101:**

410 Gauge-Grand American	410 Gauge-Extra Barrel
26" Barrel	27" Length of Barrel
3" Chambers	3" Chambers
Right Barrel-Cylinder	Right Barrel-Modified
Left Barrel-Improved Cylinder	Left Barrel-Full
Vent Rib	
Automatic Safety	
Single Selective Trigger	
Straight Grip Stock	
Red Ivory Front Bead	
Skeet Style Beavertail	
21-B Carving for Forearm and Stock	
Checked Butt	
14-1/2" Pull, Drop at Hell 2-1/4", Drop at Comb 1-1/2"	
Medium Width Comb	

*Edward E. Ulrich*  
WINCHESTER REPEATING  
ARMS CO. - RETIRED

## Cody Firearms Records Office

THIS DOCUMENT DOES NOT CONSTITUTE A FACTORY LETTER

**\*\*Do not accept this as a verification of firearm configuration\*\***

Phone: 307-578-4031

Fax: 307-578-4079

Email: [cfmrecords@centerofthewest.org](mailto:cfmrecords@centerofthewest.org)

<http://www.centerofthewest.org/explore/firearms/firearms-records/>

If the content of this search does not match the current configuration of your firearm, please contact the Records Office.  
Acknowledging that many firearms have been modified over the years, we will be happy to double-check the entry.



ncast.net

WINCHESTER MODEL 21 - SERIAL NUMBER 33100

Order sheet: Not Available

Custom Grade

Symbol: MG21CGWV

20 gauge

Barrel Length: 28 inches

Right Barrel: Win. Skeet #1, Left Barrel: Win. Skeet #2

Chamber: 3" inches

Vent Rib

Sights: Ivory bead front, Ivory bead middle

Non-Automatic safety

Straight grip stock

Checkered wood butt

Skeet style beavertail carving 21-A forend

Pull: 14 in., Drop at heel: 2-1/4 in., Drop at comb: 1-1/2 in.

Comb Width: Medium

Engraved: No engraving, Custom Built by Win. (no name)

Stock carving 21-A

Charge symbol 3011-000-1162

Order number: 34-022-A15205A

Inspection started: February 18, 1970

Inspection finished: April 28, 1970

Date: August 04, 2016 - Searched by: gm



By Reputation - THE WORLD'S GREATEST SPORTING GOODS STORE

October 10, 2007

I wanted to thank you again for your purchase of the two (2) Winchester Model 21 Grand American shotguns. These guns were made originally as a five (5) gun set and these two (2) were the last ones made in that set. Each gun has two sets of barrels and has it's original factory leather trunk case.

Each gun is valued at \$ 49,000.00 for a total investment of \$ 98,000.00 for the pair.

The 28 gauge gun is serial # W 33100.

The .410 gun is serial # W 33101

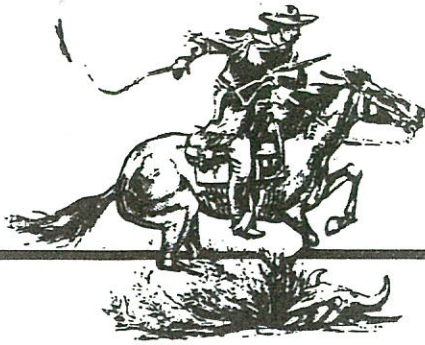
I know you will enjoy these unique and rare one of a kind shotguns for many years to come.

Kindest Regards,

A handwritten signature in black ink, appearing to read "Michael L. Bethel".

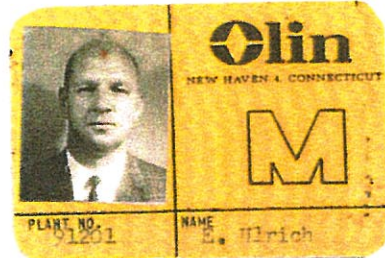
Michael L. Bethel  
Group Sales Manager,  
Fine Gun Room  
Bass Pro Shops  
3501 Paxton St.  
Harrisburg, Pa. 17111

EDWARD E. ULRICH  
5 AZALEA LANE  
WINDHAM, ME 04062



# STRAIGHT

from **WINCHESTER®**



*Edward E. Ulrich*  
WINCHESTER REPEATING  
ARMS CO. - RETIRED

**“To own a small gauge Model 21 is not only a great investment but also a piece of American history that you can touch, admire just like a piece of art but also have the pleasure of using it in the pursuit of a favorite sport.”**

NOTE: If "BILL TO" is different than "SHIP TO" indicate in SPECIAL INSTRUCTIONS.

SHIP TO: Ed Ulrich **CREDENTIALS**  
23 Bungay Terrace  
Seymour, Conn. 06483

# WINCHESTER GUN CLUB

## THE PALM BEACHES

ROUTE 710 - BEE LINE HIGHWAY  
PALM BEACH GARDENS, FLORIDA

P.O. BOX 12671  
ED ULRICH, Manager

LAKE PARK, FLORIDA  
TELEPHONE (305) 844-0411

ORIGINATED BY

- WINCHESTER-WESTERN DIVISION
- RAMSET
- OLIN BRASS
- METALLURGICAL LABORATORIES
- OLIN RESEARCH CENTER

# WINCHESTER Western



EDWARD E. ULRICH

DIRECTOR, GOVERNMENT SALES

WINCHESTER-WESTERN DIVISION

275 WINCHESTER AVENUE, NEW HAVEN, CONNECTICUT 06504

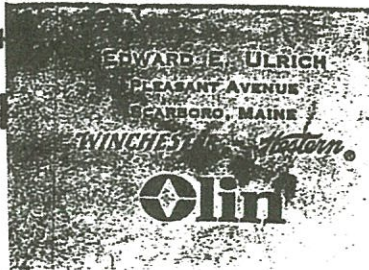
PHONE: 203 777-7911



WINCHESTER TRADE-MARK

# OLIN MATHIAS

SHOOTING PROMOTION REPRESENTATIVE  
EDWARD E. ULRICH

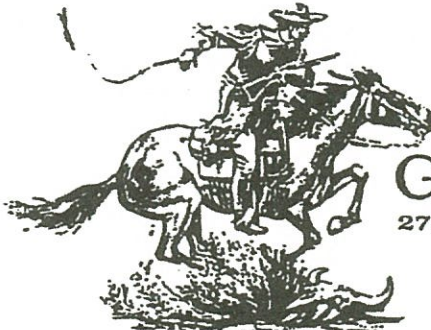


# WINCHESTER Western

ED ULRICH

WINCHESTER-WESTERN DIVISION

4384 Fushia Circle North, Palm Beach Gardens, Florida  
Area Code 305 848-3214



# GUN MUSEUM

275 WINCHESTER AVENUE, NEW HAVEN 4, CONNECTICUT

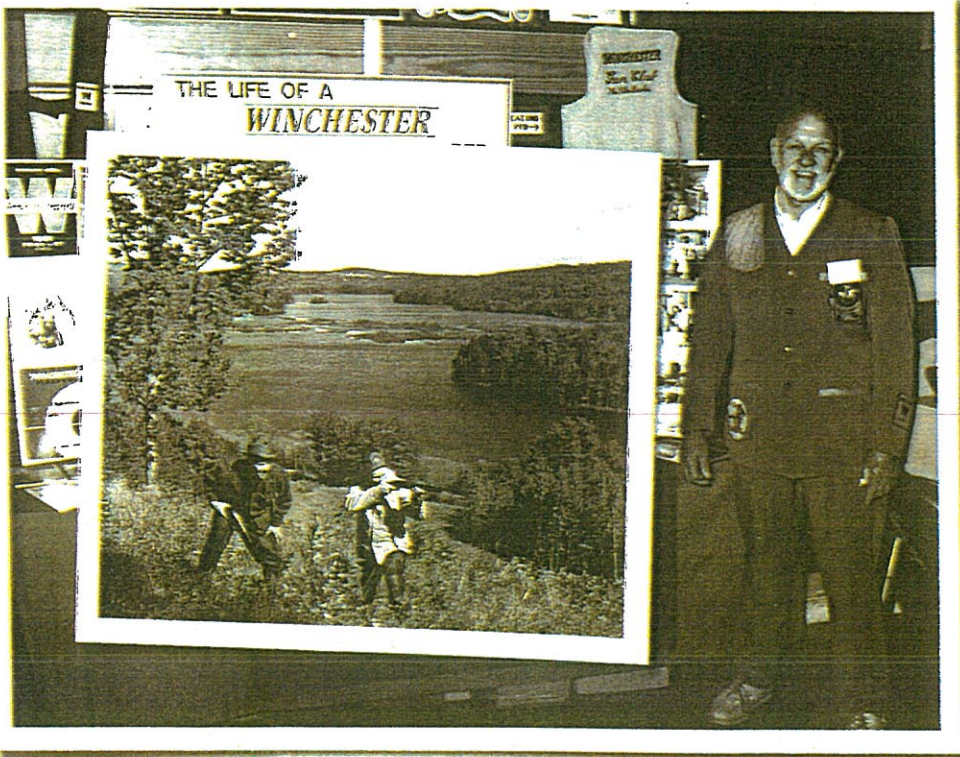
# WINCHESTER®

*Edward E. Ulrich*  
*5/8/99*

January 14, 1963

Mr. Edward E. Ulrich  
Pleasant Avenue  
Scarboro, Maine

Edward E Ulbrich  
5/8/13



always felt that this club program was twenty years ahead of its time.

In the late sixties, I did special contract work for Winchester. The company was overloaded and I went on the outside to get engraving and woodwork done. I still do consulting on special projects for U.S.R.A./Winchester as well as the Cody Museum.

If you count it all up, it comes to forty-plus years of being connected one way or another to Winchester-Western. My job consisted of lots of shooting in trap, skeet, rifle and pistol. I covered world-class championships in every type of shooting. My favorite guns in trap and skeet shooting are the Winchester Model 12 and the Model 21—in rifle shooting I like the Winchester Model 70 in big bore and the Model 52 Target in small bore.

The best part of all of this work was that I loved my work and that is hard to beat!

## *Important Facts About The Model 21-28 Gauge*

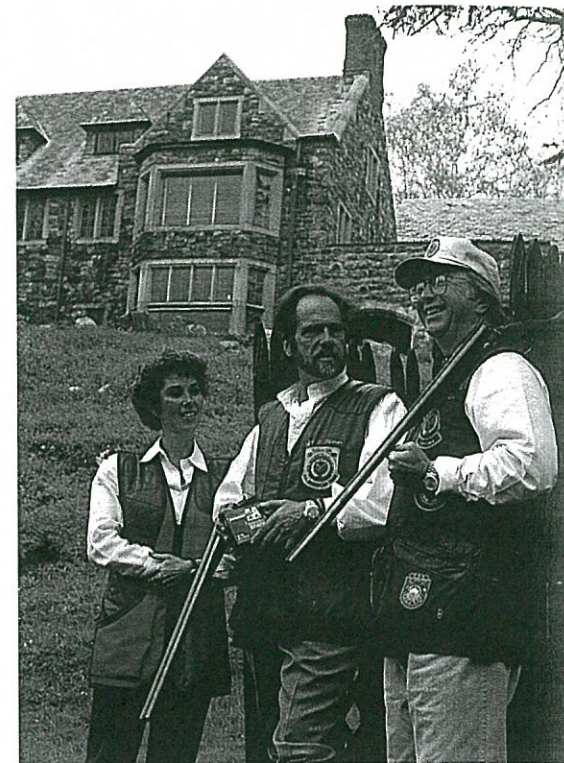
Very little is known about the Model 21-28 gauge. First produced in 1936, the 28 gauge was never listed in any Winchester catalogues or price lists available to the public. There is no mention of the Model 21-28 gauge in Winchester's Components Parts Catalogues. The only reference the author has been able to locate is in a 1945 "Salesman's Manual." In an excerpt pertaining to Skeet Grades, the 28 gauge Model 21 is mentioned briefly. The manual states, "On special order, interchangeable 28 gauge barrels are made from standard 20 gauge barrels, bored for 28 gauge, and therefore are considerably heavier than the standard 20 gauge barrels."

After discussing the mysterious 28 gauge with several former Winchester employees, it became apparent that the idea for the Model 21-28 gauge came from John Olin. An avid skeet shooter, Mr. Olin wanted the Model 21 to compete in the 28-gauge class. The result was a Model 21-28 gauge that was for all practical purposes a 20-gauge frame with 20 gauge barrels bored for the 28 gauge. The barrels were not tapered, nor was the frame size changed in any way. The 28 gauge Model 21 was barrel heavy and somewhat awkward to mount or carry in the field for extended periods of time. Many of the 28 gauge, Model 21s made were for John Olin's personal friends. Because it was awkward and heavy there were very few produced.

However, just before Olin sold-out to U.S.R.A. there were several 28-gauge barrels made in a lightweight version. The 20 gauge barrels were milled and tapered on the outside which made them lighter and streamlined. It also gave the Model 21-28 gauge a completely different feel in handling. A few of these barrels were used by Olin and U.S. R. A. However, there are no records to show this change! My guess is that between 7 to 10 Model 21s were built in the lightweight version.

Edward E. Ulrich  
Winchester Repeating  
Arms Co., Retired

*Specializing In The Model 21 Shotgun*



Following a Sporting Clays competition at Migdale Estate, Millbrook, New York, owners Gary and Denise Herman (*center and left*) discuss future competitions with U.S. Sporting Clays Association Chairman and President Robert Davis, of Houston, Texas. Sporting Clays is the fastest-growing shooting sport in America today. Competitors often use expensive guns (like the Model 21s shown here), and the shoots are as classy as driven-bird shooting in England and Scotland.

The Grand Royal, the most deluxe grade of Model 21 and one of the rarest of all Winchesters. Serial number W9190, shown here, was made for presentation to John M. Olin and has his portrait and signature on the left side of frame. A total of four additional Grand Royals were made later (serial numbers W33103, W33104, W33105, and W33121). The concept dates back to c. 1979-80. The John Olin gun is by master engraver-inlayer A. A. White, who also designed the embellishments, based on suggestions of patron Kevin Kurtz and Kurtz Hardware Company, Des Moines. Casing by Marvin Huey.



[Home](#) [Store Locations](#) [Events](#) [Your Account](#) [Catalogs](#) [Site Map](#) [Gift Card:](#)

Product Search



WORLD'S LEADING SUPPLIER OF PREMIUM OUTDOOR GEAR

[Freshwater Fishing](#)

[Fly Fishing](#)

[Saltwater Fishing](#)

[Hunting](#)

[Camping & Auto](#)

[Marine & Electronics](#)

[Apparel](#)

[Footwe](#)

Bass Pro Shops

[Gear Wish Li](#)

**Online Shopping**

- [Freshwater Fishing](#)
- [Fly Fishing](#)
- [Saltwater Fishing](#)
- [Hunting](#)
- [Camping / Auto](#)
- [Marine / Electronics](#)
- [Apparel](#)
- [Footwear](#)
- [Gift / Home / Golf](#)
- [Clearance](#)
- [Gift Cards](#)
- [Tracker Boats](#)

**Customer Service**

- [Find Answers or Contact Us](#)
- [International Orders](#)

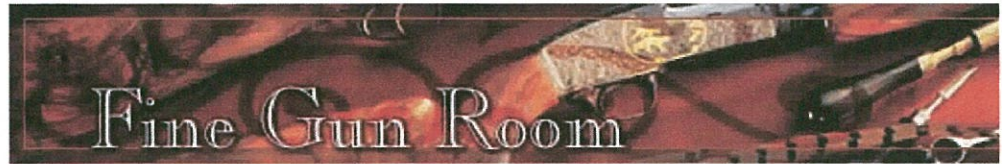
**Community**

- E-mail Newsletter**
- 
- [Your Account](#)
- [Talk Forums](#)
- [Outdoor Library](#)

**From Bass Pro**

- [News Releases](#)
- [Rewards Points](#)
- [Corporate Incentives](#)
- [Career Opportunities](#)
- [Bass Pro Shops](#)
- [Outdoor World TV](#)
- [Hunting/Fishing Licenses](#)
- [Become an Affiliate](#)

**Destinations**



**Winchester 21 Grand American Pair SOLD!!!!**

[« Re](#)

**Description:** .410 26" BBL=.000/.006.410 27 1/4" BBL= .007/.01828 Gauge 26" BBL Gauge 26" BBL= .004/.008

**Gun Specifications**

<b>SKU</b>	1397186,1397188
<b>Make/Manufacture</b>	Winchester
<b>Category</b>	Winchester
<b>Model</b>	21 Grand American Pair SOLD!!!!
<b>Serial Number</b>	W33101,W33100
<b>Price</b>	<b>\$115,999.99</b>
<b>Condition</b>	100%
<b>Engraving</b>	by Nick Kusmit
<b>Chamber</b>	.410=3
<b>Chokes</b>	N/A
<b>Bore</b>	.410, 28
<b>Barrel</b>	.410= 26&27 1/4, 28=26&26
<b>Action</b>	SLE
<b>Trigger</b>	Single
<b>Stock</b>	Highly figured Walnut stock
<b>Stock Drop</b>	1 1/2, 2 1/2
<b>LOP</b>	14 1/4
<b>Sights</b>	Bead
<b>Weight</b>	6 3/4
<b>Case</b>	Each are Cased
<b>Store Location</b>	Harrisburg, PA

**Gun Co:**

- [Access](#)
- [Americ](#)
- [Beretta](#)
- [British](#)
- [British](#)
- [Browni](#)
- [Browni](#)
- [Colt](#)
- [Comm](#)
- [Compe](#)
- [Double](#)
- [Drilling](#)
- [Europe](#)
- [Germa](#)
- [Gunsr](#)
- [Handg](#)
- [Italian](#)
- [Library](#)
- [Rifles](#)
- [Spanis](#)
- [Specia](#)
- [Trap G](#)
- [Used C](#)
- [We Bu](#)
- [Winche](#)

**Manufa**

Some of the finest shotguns were shown by Boyd Corliss, Tony Galazan's representative of his Conn. Shotgun Mfg. Co. as well as Ed and Sandy Ulrich with their Winchester Model 21's plus some other very fine exhibitors. There were plenty of Antique Arms displayed by Paul and Sally Weisberg, Bob Planke, Ed Caffarella, Norm Gelinas, Stuart English, myself and others. Larry Higgins brought some great investment quality guns and knives as did Bob Rohrig and Tom Eiben. Speaking of knives Art Green has one of the largest selection of collectable knives in the northeast and he has been with us from the beginning. Bob Loden had some fantastic Adirondack and Sporting antiques and collectables and Bob Stewart and Andy Berkowitz brought some fine vintage Militaria Collectables.

SPECIAL GUNS FINAL INSPECTION REPORT

MODEL: MG 210 QWV ORDER NUMBER: 34-022-A15205A DATE: 2/11/70 *Ed. Ed. Ed.*

CHARGE SYMBOL: 3011-000-1162 M121 Custom Grade 20 ga 28 inch

DESCRIPTION OF GUNS ORDERED: WIN SKEET Right #2 Left Win SKEET #2 Front Sight Ivory Bone Mid Sight Ivory Bone (No Engraving) Custom Built By Win (No Name) 3 inch

Chamber: VR Non Auto Safety Straight Grip Stock Check Wood B.T. Carving 21A

SECTION NO.: 33800 PATTERN AVE. SKEET Style Beaver Tail R.H. BARREL: 1 1/2 left 1/8 low 69% L.H. BARREL: 1 0/10 low 80%

TEMPERATURE: \_\_\_\_\_ BAROMETER: \_\_\_\_\_ R.H. \_\_\_\_\_ L.H. \_\_\_\_\_ SHOT BY: \_\_\_\_\_

ACCURACY SINGLE BARREL

FUNCTION OF ACTION \_\_\_\_\_ RIFLE NO. \_\_\_\_\_ TARGETED WITH (VOLUME & KINDS OF LOAD) \_\_\_\_\_ AT (NO. YDS.) \_\_\_\_\_ FEET \_\_\_\_\_

GROUP AVE. \_\_\_\_\_

**BARREL**

CONDITION INSIDE  BORE DIAMETER  RIFLING DIAMETER

NO RING BORES OR SCRATCHES VISIBLE FROM FRONT END

SIGHTS - CONDITION - GENERAL ALIGNMENT - RIB STRAIGHT  LEADING

STANDING BREECH - BBL'S FLUSH BOTH SIDES  WATER TABLE FIT

**STOCK**

MUTT PLATE \_\_\_\_\_ SHAPE \_\_\_\_\_ PITCH \_\_\_\_\_

LENGTH OF PULL 14 DROP OF WHEEL 2 1/4 DROP OF COMB 1 1/2 WIDTH OF COMB Medium

SHAPE \_\_\_\_\_ GRADE OF WOOD \_\_\_\_\_

SELECTIVE EJECTION EQUALLY TIMED

**FORE-END**

CHECKERING  FINISH  FIT

**TRIGGER**

WEIGHT TRIGGER FULL-SINGLE R.H. \_\_\_\_\_ L.H. \_\_\_\_\_

CREEP  COCKING  EVEN LATE \_\_\_\_\_ EARLY \_\_\_\_\_

TAKE DOWN  FINISH METAL PARTS

REMARKS: \_\_\_\_\_

*W. J. J. 4/28/70*  
DAC - NOT AVAILABLE FSJ 4/28/70

INSPECTOR (SIGNATURE): Burdette R. Colburn 33800