

Table 4-3. Winchester-Western Loads for the Nine Additional Cartridges
(in the order they were added to the Model 70)

Caliber	Bullet	Velocity		Energy		Zero = 100 yds.*		
		Muz.	100 yds.	Muz.	100 yds.	50 yds.	200 yds.	300 yds.
.35 Rem.	200gr., SP	2100	1710	1950	1300	+0.8	-11.0	-39.6
.35 Rem.	200gr., ST	2100	1710	1950	1300	+0.8	-11.0	-39.6
.300 Savage	150gr., SP	2670	2350	2370	1840	+0.3	-5.5	-19.1
.300 Savage	150gr., ST	2670	2390	2370	1900	+0.3	-5.5	-18.1
.300 Savage	180gr., SP	2370	2040	2240	1660	+0.4	-7.6	-25.5
.300 Savage	180gr., ST	2370	2160	2240	1860	+0.5	-6.6	-22.5
.308 Win.	110gr., PSP	3340	2810	2730	1930	+0.1	-3.8	-13.8
.308 Win.	125gr., PSP	3100	2740	2670	2080	+0.1	-3.8	-13.4
.308 Win.	150gr., SP	2860	2520	2730	2120	+0.2	-4.6	-16.5
.308 Win.	150gr., ST	2860	2570	2730	2200	+0.2	-4.6	-15.5
.308 Win.	180gr., SP	2610	2250	2720	2020	+0.3	-6.1	-21.0
.308 Win.	180gr., ST	2610	2390	2720	2280	+0.4	-5.1	-18.0
.308 Win.	200gr., ST	2450	2210	2670	2170	+0.4	-6.5	-21.6
.243 Win.	80gr., PSP	3500	3080	2180	1690	-0.1	-2.9	-10.4
.243 Win.	100gr., SP	3070	2790	2090	1730	+0.1	-3.6	-12.4
.358 Win.	200gr., ST	2530	2210	2840	2160	+0.4	-6.7	-22.4
.358 Win.	250gr., ST	2250	2010	2810	2230	+0.6	-7.8	-26.8
.458 Win. Magnum	500gr., FMC	2130	1910	5040	4050	+0.7	-9.0	-29.6
.458 Win. Magnum	510gr., SP	2130	1840	5140	3830	+0.7	-9.3	-32.3
.338 Win. Magnum	200gr., SP	3000	2690	4000	3210	+2.0	-7.9	-23.0
.338 Win. Magnum	250gr., ST	2700	2430	4050	3280	+2.6	-9.9	-29.0
.338 Win. Magnum	300gr., SP	2450	2160	4000	3110	+3.4	-12.6	-37.2
.264 Win. Magnum	100gr., PSP	3700	3260	3040	2360	+3.0	+3.6	-8.6
.264 Win. Magnum	140gr., SP	3200	2940	3180	2690	+3.7	+4.3	-9.9
.300 Win. Magnum	150gr., PSP	3400	3050	3770	3250	+3.5	+4.2	-9.5
.300 Win. Magnum	180gr., PSP	3070	2850	3620	3030	+3.8	+4.5	-10.6

* Rise or Drop in inches.

Table 4-4. Model 70 Production Shipments by Chamberings

Chambering Order of Rarity	Shipments				
	1936-39	1940-42	World-wide 1943-45	1946-48	1949-51
.22 HORNET	1,724	1,663	81	2,868	7,016
.220 SWIFT	1,982	1,023	35	2,051	5,563
.243 WIN.	—	—	—	—	—
.250-3000 SAV.	320	305	42	1,292	488
.257 ROBERTS	1,176	659	52	2,455	4,905
.264 WIN. MAGNUM	—	—	—	—	—
.270 W.C.F.	2,585	3,324	169	14,573	32,243
7mm	252	357	1	527	112
.300 SAVAGE	—	—	—	213	0
.308 WIN.	—	—	—	—	—
.30-06	12,331	15,010	1,121	20,844	41,325
.300 H&H MAGNUM	1,275	1,417	144	2,315	7,719
.300 WIN. MAGNUM	—	—	—	—	—
.338 WIN. MAGNUM	—	—	—	—	—
.35 REM.	—	—	—	—	—
.358 WIN.	—	—	—	253	0
.375 H&H MAGNUM	438	413	23	1,278	3,122
.458 WIN. MAGNUM	—	—	—	—	—
SPECIALS/OTHER	1,908	1,044	47	2,090	2,452
TOTALS	23,991	25,215	1,715	50,759	104,945

(Continued)

Table 4-4, Continued

Chambering Order of Rarity	Shipments			Other* International	
	1952-54	Canadian 1955-60	1961-63	1952-54	1955-63
.22 HORNET	105	0	0	39	0
.220 SWIFT	286	72	17	676	421
.243 WIN.	—	545	178	—	5,706
.250-3000 SAV.	0	0	0	0	0
.257 ROBERTS	632	26	0	448	200
.264 WIN. MAGNUM	—	269	294	—	2,287
.270 W.C.F.	213	702	208	3,056	5,675
7mm	0	0	0	0	0
.300 SAVAGE	0	0	0	0	0
.308 WIN.	318	734	315	3,504	1,735
.30-06	245	1,030	344	4,094	10,880
.300 H&H MAGNUM	73	606	31	1,053	2,112
.300 WIN. MAGNUM	—	—	100	—	209
.338 WIN. MAGNUM	—	211	92	—	1,942
.35 REM.	0	0	0	0	0
.358 WIN.	—	152	0	—	0
.375 H&H MAGNUM	58	196	41	340	952
.458 WIN. MAGNUM	—	0	0	—	227
SPECIALS/OTHER	7	10	5	0	575
TOTALS	1,937	4,553	1,625	13,210	32,921

* Other International—excludes U.S. and Canadian shipments

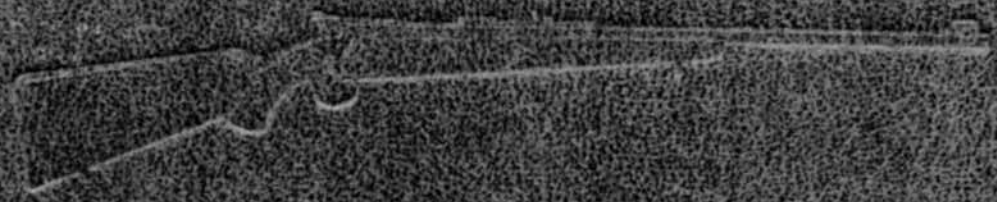
Chambering Order of Rarity	Shipments				Grand Totals
	1952-54	Domestic		1961-63	
		1955-57	1958-60		
.22 HORNET	6,810	0	0	0	20,306
.220 SWIFT	3,755	2,347	1,271	435	19,934
.243 WIN.	—	14,220	13,053	9,916	43,618
.250-3000 SAV.	303	0	0	0	2,750
.257 ROBERTS	2,784	1,063	241	0	14,641
.264 WIN. MAGNUM	—	—	8,682	12,582	24,114
.270 W.C.F.	22,796	15,460	11,545	9,774	122,323
7mm	221	0	0	0	1,470
.300 SAVAGE	149	0	0	0	362
.308 WIN.	23,470	5,744	2,871	2,499	41,190
.30-06	30,116	27,800	23,698	19,380	208,218
.300 H&H MAGNUM	7,025	6,857	5,262	1,297	37,186
.300 WIN. MAGNUM	—	0	0	4,607	4,916
.338 WIN. MAGNUM	—	0	5,072	2,208	9,525
.35 REM.	151	0	0	0	404
.358 WIN.	—	1,848	0	0	2,000
.375 H&H MAGNUM	2,390	2,243	1,678	833	14,005
.458 WIN. MAGNUM	—	671	210	118	1,226
SPECIALS/OTHER	1,788	1,386	879	1,092	13,283
TOTALS	101,758	79,639	74,462	64,741	581,471

THE RIFLEMAN'S RIFLE
Winchester's Model 70, 1936-1963

by
Roger C. Rule

Alliance Books, Inc.
Northridge, California

1982



The Rifleman's Rifle

