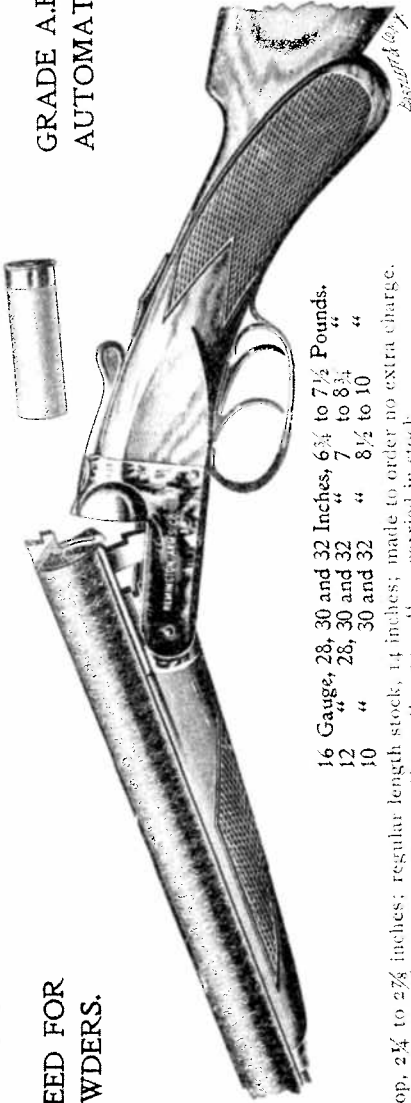


REMINGTON HAMMERLESS DOUBLE BARREL SHOT GUNS.

GUARANTEED FOR
NITRO POWDERS.

GRADE A.E.
AUTOMATIC EJECTOR.



16 Gauge, 28, 30 and 32 inches, 6 3/4 to 7 1/2 Pounds.
12 " 28, 30 and 32 " 7 to 8 1/4 "
10 " 30 and 32 " 8 1/2 to 10 "

Drop, 2 1/4 to 2 3/4 inches; regular length stock, 14 inches; made to order no extra charge.
" 27/8 to 3 1/8 " 14 " carried in stock.

Any deviation in drop will be subject to an advance of \$4.00 list.

Damascus barrels, choke-bored, English walnut stock, half pistol grip, rubber butt-plate, checkered fore-end, case-hardened frame and mountings, automatic safety, Purdy fore-end snap, top snap, extension rib with bite, flat-matted rib, independent automatic shell ejector. For parts and prices see page 29.

10, 12 AND 16 GAUGE.

GRADE A.E.—Two-stripe Damascus barrels, plain finish, English walnut stock	\$50 00
" B.E.—Fine three-stripe Damascus barrels, line engraving, fine English walnut stock	65 00
" C.E.—Finer Damascus barrels, scroll engraving, selected English walnut stock and finer checkering, silver name-plate	95 00
" D.E.—Very fine Damascus barrels, fine scroll engraving, fine English walnut stock and checkering, silver name-plate	155 00
" E.E.—Finest Damascus barrels, finest quality bird and game engravings, best English walnut stock, checkered sides, gold name-plate	230 00
" A.E.R.—Remington Steel barrels, blue, English walnut stock, finish the same as Grade A.E.	50 00
Remington blue Steel barrels are manufactured in our own works, and sold at the same price as ordinary Damascus barrels. Guaranteed for nitro powders, and free from all imperfections.	
" A.E.O.—Extra quality "Ordinance" Steel barrels, blue, English walnut stock, finish the same as Grade A.E.	60 00
" B.E.O.—Extra quality "Ordinance" Steel barrels, blue, English walnut stock, finish the same as Grade B.E.	75 00

In the C., D. and E. Grades, "Ordinance" Steel barrels will be furnished without additional charge. The "Ordinance" steel is of the highest grade, and is especially recommended for heavy charges of nitro powder. The tensile strength of this steel is 110,000 lbs., and the elastic limit 60,000 lbs., this being greatly in excess of any strain to which shot gun barrels are subjected with reasonable loads of nitro powders.

The price of barrels in any Grade is one-half the price of the gun of that Grade. See prices on opposite page.

Hollow Rib Furnished on Grades B., C., D., E., to Order.

REMINGTON
ARMS COMPANY

Lion, New York.

1898

The stock gold name plate identifies the owner of this rare shotgun as "E E Darling, Salt Lake City Utah". Elmer Elsworth Darling was born in 1863 in PawPaw, Michigan. Elmer eventually settled in Salt Lake City, Utah, where he established a number of successful businesses. He developed real estate and built homes. By 1892 his Darling Place Development consisted of 50 residences. The development was referred to as "one of the most popular residence portions of the city". In recognizing the success, the streetcar companies extended their lines through his development. Elmer also had a company that sold insurance and loaned money. In addition, he owned Monarch Motor Co, selling Ford automobiles. In 1923 he patented a "Tire Alarm" for the purpose of warning the loss of air in a pneumatic automobile or truck tire. Elmer died on June 8, 1937. His shotgun was passed down to another family member and continued to do so until 2013 when it was discovered by a Remington collector. The gun was featured on the cover of the 3rd Quarter 2014 Remington Collector's Journal.



Elmer E. Darling
Elected Dec. 27, 1889
Resigned

Caption	Elmer E. Darling, elected December 29, 1889
Photograph Number	p0254n484
Description	Portrait of Elmer E. Darling, member of the Alta Club in Salt Lake City, Utah, elected December 29, 1889, in mortgage business
Keyword	Utah; Portraits; Men; Alta Club
Subject	Darling, Elmer E.--Photographs; Alta Club (Salt Lake City, Utah)--Photographs
Place Names	Salt Lake City (Utah); Salt Lake County (Utah)
Collection Number and Name	P0254 Alta Club Photograph Collection
Textual Date	Circa 1890s
Owning Institution	Multimedia Archives, Special Collections, J. Willard Marriott Library, University of Utah
Access Restrictions	This material may be protected by copyright. Permission required for use in any form. For further information please contact the Multimedia Archivist, Special Collections, J. Willard Marriott Library, University of Utah.
Type	Image
ARK	ark:/87278/s6ng5f3v



Elmer E. Darling
Elected Dec. 27, 1907
Resigned

Avenues Historic District (amended)

Name of Property

Salt Lake County, Utah
County and State

Second Avenue), Hannah Gay (servant, 25 "S" Street), to name a few. Many of the widows and married women managed rental properties or worked from home: Clara Cottle (landlady, 907 Third Avenue) and Martha Evans (music teacher, 207 Fourth Avenue).²²

Many of Salt Lake City's most prolific builders and contractors lived in the Avenues during this period, for example, William L. H. Allen, John G. Anderson, Charles J. Brain, and John W. A. Timms. Several prominent architects of the period, such as Richard K. A. Kletting, architect of the Utah State Capitol building, and Walter E. Ware, lived in the Avenues as well as designing many homes for their Avenues neighbors. Numerous speculative builders and developers worked in the Avenues during this period, although only two formal subdivision plats were filed: Cooke Subdivision was platted in 1888 on the block between Fifth and Sixth Avenue, and "L" and "M" Street; and Victoria Place was platted in 1892 between Second and Third Avenue, and "U" and Virginia Street.

One of the earliest and most successful examples of speculative development was Darlington Place, a collection of non-contiguous parcels from "N" to "S" Street, between First and Third Avenues. Elmer E. Darling, an Avenues resident, began Darlington Place in 1890, and by 1892, it was described as "one of the most popular residence portions of the city."²³ The extant residences of Darlington Place are architected-designed two-story brick and shingle dwellings. The speculative development was not limited to men. Rachel McMaster was an Avenues resident and real estate agent, while Lillias T. Staines built homes such as the duplex at 434 Third Avenue.

The coming of the transcontinental railroad in 1869 ended Salt Lake City's short era of isolation, and within a decade, the local pioneer builders' vernacular would be augmented by a variety of sources. The coming of the railroad, access to a variety of materials, and the availability of pattern books and builder's guidebooks allowed local builders to produce replicas of the Victorian cottages being built all across the United States. Speculative builders were particularly busy in the Avenues during this period and it is common to see tracts of two to four similar houses in a row. Ornamentation such as lathe-turned porch posts, spindle work and sometimes "gingerbread" cut woodwork was found on Victorian cottages throughout the district. In general, the types and styles of Victorian cottages were identical to the homes built throughout the city, but with narrow-lot and slope-derived adaptations where necessary. During this period, many of the older homes were converted to cross wings or "dressed up" with Victorian ornamentation.

The nomination for the district noted that the majority of residences would not be considered high style architecture:

While incorporating a few elements of various styles for example, the irregular plans and massing of the Queen Anne style most Avenues homes lack the elaborate detailing and decorative trim of even the more plain pattern book designs of the period. These houses might more accurately be called "Victorian Builders' Eclectic." While such a phrase lacks the defined characteristics of traditional stylistic categories of the period, it indicates the casual and general

²² *The Avenues of Salt Lake City*, 104.

²³ Quoted in *The Avenues of Salt Lake City*, 15.

The Avenues Historic District was listed on the National Register of Historic Places in 1980. Portions of the content on this web page were adapted from a copy of the original nomination document. Adaptation copyright © 2011, The Gombach Group.

Description

The Avenues Historic District is a large historic district of almost 100 square blocks of late 19th and early 20th century domestic architecture. Most of the structures are 1-1/2 to 2-1/2 stories. Beginning around the turn of the century a number of apartment buildings in various revival styles were built in the southwest corner of the district.

Over one hundred architect-designed homes have been identified in the Avenues Historic District, in styles from Queen Anne to the Prairie style. These structures are a significant element of the visual character of the district, which is unusual in its integration of architectural styles. The diversity of styles is a result of the subdivision of the original blocks, originally laid out with four lots to the block. As the neighborhood changed, more and more of the original lots were subdivided by the original owners, producing a diversity which is one of the important characteristics of the Avenues Historic District. Several significant public and commercial buildings remain in the district, including Rowland Hall-St. Marks School (National Register), the Danish Evangelical Lutheran Church, and the Twentieth and Twenty-seventh LDS Wards.

Brigham Young's Grave, 140 First Avenue, has been included in the Avenues Historic District as a significant site, both because of Brigham Young's importance as a Mormon and political leader and pioneer, as well as the general feeling of the grave as an integral part of the Avenues. In addition, this is the only "family plot"

cemetery in the Avenues, and this portion of the area was owned by Young, close to his residence on South Temple Street.

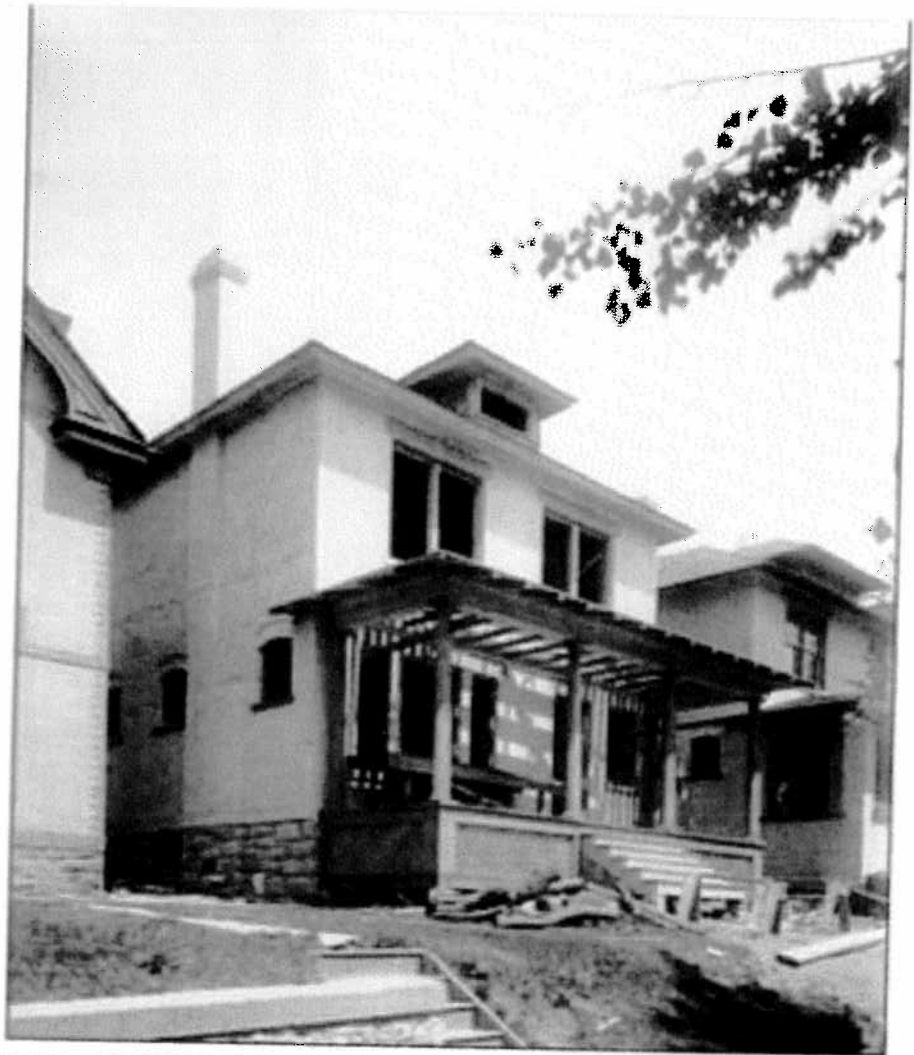
The Avenues neighborhood of Salt Lake City is the northern-most section of the crescent formed by the Wasatch Mountains on the eastern boundary of the Salt Lake Valley. Unlike the long eastern section of the crescent which flattens out partway up the slope to form the "East Bench," the Avenues is relatively steep all the way to the crest of the foothills. The difficulty of getting water to this slope delayed the settlement of the greater part of the area until almost the end of the nineteenth century.

The Avenues, laid out in the early 1850's as Plat D of Salt Lake City, was the first section of the city to deviate from the original city plan of ten acre blocks. Probably a consequence of the steep slopes and the lack of water on the "Dry Bench," the smaller streets and blocks of the Avenues resulted in a streetscape considerably different from the rest of the city. The differences became even more pronounced when the quarter-block lots were subdivided by their original owners, sometimes with houses so close together that blocks assumed almost the appearance of row houses.

The variation from the original city plat is also reflected in the street names. Originally the north-south streets were named for trees, and the four east-west avenues were named Fruit, Garden, Bluff and Wall Streets. By 1885, the east-west streets had become First, Second, Third and Fourth Streets; and the north-south streets had been lettered, from A to U Streets (V Street became Virginia). The few remaining maps make it difficult to determine the pattern of house and street development in the Avenues. The history of Darlington Place, in the area of about First

to Third Avenues between P and S Streets, is one documented example. Beginning in about 1890, Elmer Darling and Frank McGurkin began selling lots and building homes. By 1892, Darling reported in the New Year's Day issue of the *Tribune* that "fifty residences adorn our Darlington Place which were not there in 1890." Recognizing the developers' success, streetcar companies extended lines on First and Third Avenues through the new development.

These two homes on First Avenue between O and P Streets were built in 1909 by the Salt Lake Security and Trust Company. The company was owned by Frank McGurkin, who had previously worked with Elmer E. Darling in the development of the nearby Darlington Place subdivision. The Salt Lake Security and Trust Company published a book entitled *Owning Your Own Home* in 1908. The publication was directed at the middle class, promoting the benefits of home ownership. McGurkin specifically promoted those homes and neighborhoods developed by his company. Three quarters of the homes featured in the book were located in the Avenues.



E E Darling Insurance and Loans

E. F. DARLING

INSURANCE

AND LOANS

142 Main St.

DESERET NEWS DECEMBER 23 1899

CHEAP MONEY TO LOAN
On Property. Special Terms. Lowest Prices.
Privilege Repayment Any Time.
ELMER DARLING,
No. 9 West Second South Street.

FRESH CUT FLOWERS

Utah Productions. No Shipped Flowers
— Lafayette Floral Establishment —
507 10th East Street. Telephone 629

1016

R. L. POLK & CO.'S

Real Estate—Continued.

Burton, Groesbeck & Andrew, 50 Wasatch bldg.
Cannon George M, 1-3-5 S Main.
Capitol Hill Land & Improvement Co, 50 Wasatch bldg.
Carlson Otto T, 1 Scott-Auerbach bldg.
Carter Augustus R, 22 Central blk.
Casady Elmer E, 18-19 Commercial blk.
Casady L E, 150 S Main.
Casady Wm, 262 S West Temple.
Clift F D, 336 S West Temple.
Clive Jedediah H, 66 S Main.
Coates Harold P G, 12 Commercial Blk.
Coates Lewis B, I O O F Temple Market.
Colborn, Skinner & Co, 22-23 Commercial blk.
Conklin Jeremiah C, 22 Wasatch bldg.
Cook F B, 76 W 2d South.
Cook Melvin D, s s W S R T Ry, adjoining Brighton add.
Corker & Co, 251 S Main.
Corum John J, 13 Eagle Blk.
Courtney John N, 13 Eagle bldg.
Cromer Wm H, 16 Scott-Auerbach bldg.
Crosby John K, 32 Richards.
Crosby Joseph, 32 Richards.
Dankowske Fred V, e s State 1 s of 11th South.
Darling Elmer E, 307 Progress bldg.
Davis Theodore A, 409 Dooly bldg.

Manufacturers of
Stencils, Seals, Steel & Rubber Stamps, Key Checks, Badges, Etc.

CO-2

O'Connor, The Leading Druggist

Prop. White House Drug Store, 206 S. Main.
Agent Plato's Cream of Violets

SALT LAKE CITY DIRECTORY.

245

Daniels John, coachman 253 W 2d South.

" John, tailor, bds 28 S 6th West.

" John, tailor Miller & Co, bds 28 S 6th West.

" John T, supt, bds The Manitou.

" Sophia, (wid Daniel L), res rear 113 2d.

Danielson Selma, domestic 815 E South Temple.

Danks Mrs Rhoda, res 273 W North Temple.

Danley George, solicitor Atlantic Tea Co, bds 442 W 3d South.

" Thomas E, carp, res 116 S 8th West.

Danner Jasper M, brakeman R G W Ry, res 518 S 1st West.

Dansie Benjamin W, stockraiser, res rear 933 E 4th South.

Darcy Harry J, tinner, res 26 Gregory ct.

Dargavel Wm, lab, res 413 W 2d North.

Darke Joseph S, (Darke & Salisbury), res 938 E 3d South.

" Joseph S, clk R G W Ry, res 572 4th East.

" Joseph W, clk Simon Bros, bds 938 E 3d South.

" Sidney George, opr S L Herald, res 156 9th East.

Darke Sidney W,

(Darke & Anderson), res 358 E 5th South.

" Wm, stenogr Darke & Anderson, bds 358 E 5th South.

Darke & Anderson,

(Sidney W Darke, John B Anderson), Lawyers 63 Hooper Bldg.

" & Salisbury, (Joseph S Darke, Wm F Salisbury), grocers 3d South n w cor 3d East.

Darling Albert W, carp, res 76 Bothwell.

Darling Elmer E,

Insurance and Loans, Railroad Ticket Broker 9 W 2d South, res 1031 1st.

" John P, bds 164 E 1st South.

" Phoebe A B, (wid Edgar D), bds 664 E 1st South.

Beats Them All. KEELEY HOME MADE BI
266 S MAIN STREET.

MOUNTAIN STATES

Barnhart & Danner, King distributor in Salt Lake City, has moved into a new building at Fourth South and West Temple streets and will operate under the name of the Lincoln Garage.

The Grady Motor Car Co., Salt Lake City, has added the Cole agency to its business.

The Monarch Motor Co., Salt Lake City, has been sold by Elmer E. Darling to H. E. Davis and Thomas K. Mott. The business will be continued as heretofore.

SOUTH

The Quick Tire Service has been incorporated in Louisville, Ky. The incorporators are Robert C. Kinkead, Owen D. Duffin and Robert F. Vaughan.

C. A. Benjamin, formerly sales manager of the automobile department of the American Locomotive Co. and later with the Fiat, has been made New York state distributor of the Apperson. Benjamin is at present in Syracuse and will probably make his headquarters there. Before being associated with the Alco he was the Packard dealer in Syracuse.

W. J. Durning, formerly connected with the Goodrich Rubber Co., Akron, has opened a vulcanizing and tire repair shop at 138 North Third street, Louisville, Ky. He contemplates taking an agency.

John Boyd Kennedy Co. has opened a

his business from 1803 to 1527 Grand avenue.

E. G. Cresse has opened salesrooms for the Allen in Osawatomie, Kan.

Grant & Oakes, Hutchinson, Kan., has enlarged the Studebaker Garage, which is at 123-125 Sherman street East; an 80-foot addition was built at the rear.

NORTHWEST

The Iowa Auto & Supply Co., Des Moines, plans improvements to its plant costing \$10,000; 9,000 feet of floor space will be added and an elevator installed. Earl Manbeck, manager of city sales for this company, recently won a \$300 chest of silver in a salesman's contest conducted by the Chalmers Motor Car Co.

The Leachman-Claiborne Co., Des Moines, will move this fall from 8th and Mulberry streets to new and larger quarters at 11th and Locust streets. More than \$30,000 will be spent in remodeling and equipping the new building.

The Tri-State Auto Co., Inter-State and Moon dealer in Minneapolis, has opened new salesrooms at 1225 Hennepin avenue to accommodate its city trade.

The General Auto Co., Clinton, Ia., has opened for business at Fifth avenue and First street. It handles electric starters and accessories and is operating a repair shop. The members of the company are Earl D. Schott and Wesley P. Upton.

The Hawkeye Motor Sales Co., Des Moines, has secured the Princess agency. Charles M. Friedburg is manager.

MIDDLE WEST

The Western Reserve Rubber Co. has been formed in Akron, O., to deal in tires. The capitalization is \$10,000 and the incorporators are George E. Hall, Arthur F. Witten, F. M. Hall, M. Chamberlain and W. C. Johnson.

The Auto Electric Equipment Co. has been organized in Cleveland by S. L. Blackburn, R. B. Gargett, P. A. White, F. M. White, T. M. Madden and J. E. Klumpf. The capitalization is \$10,000.

H. D. Hutchinson, who has been in charge of the motor department of the General Electric Co. in Chicago, has been made manager of the same department for the Gibson Co., Indianapolis.

G. C. Hobson, one of the best known car salesmen in Indiana, has joined the staff of the Cole Sales Co., Indianapolis.

The Indiana Oxygen Co. has been formed in Indianapolis by G. D. Armstrong, former superintendent of the Prest-O-Lite Co.; L. L. Sinclair, of the same company, and W. L. and J. R. Brant. A welding department is a feature of the business.

Fred C. Wood, well known in motor car circles in Cleveland, has been made wholesale distributor of the Oakland in 28 counties in southern Ohio, the western half of West Virginia, all of Kentucky, southern Indiana and part of Tennessee and Virginia. He will make his headquarters in Cincinnati.

Harley R. Shelby and **B. J. Hinckley**, Decatur, Mich., have purchased the garage business of **Len A. Ross**.

**Camp Fire
Girls
Agency**

Hamilton's
CORRECT DRESS FOR WOMEN
216 SOUTH MAIN ST

Pattern
and Street
Hats

ISIC TEMPLETON BUILDING
PHONE WAS. 2108

ancing and Band Instruction

282

DAN

R. L. POLK & CO'S

DAU

**MODEL STEAM
LAUNDRY**

244 W. 2nd North St. Phone Exchange 620

Dansie Benj W, woolgrower, r 937 E 4th South.
—Chas N, livestock, 1381 10th East, r same.
—Mrs Christina, r 1207 Arapahoe av.
—Elmer B, student, b 937 E 4th South.
—Elsie R, smstrs Walker's, b 1207 Arapahoe av.
—Emgree M, wrapr, b 1207 Arapahoe av.
—G Walter, bkpr, b 1381 10th East.
—Jas, lab, r 360 Marlon.
—Jos H, mldr S L Eng Wks, b 1207 Arap-

Darke Mae L, b 156 9th East.
—Richd, lab, rms 451 N 3d West.
—R Geo, storekpr U P & L Co, r 240 W 1st North.
—Sidney G, lino Herald-Repub, r 156 9th East.
—Venna B, stenog S L Hdw Co, b 360 W 6th South.
Darling Alfred W, jan, r 433 5th East.
—Alice, b 433 5th East.
—Dorothy, student, b 662 2d av.
—Elbert H, sismn M S T & T Co, r 662 2d av.
—Elma, student, b 1031 1st av.
DARLING ELMER E, Real Estate, 139 E 2d South, Tel Was 943, r 1031 1st av. Tel Was 4615-W.
—E Bruce, wirrmn S L Elec Sup Co, r 3371 7th East.
—E F, died Mar 27, '14, aged 65.
—Frank, real est, rms 652 S West Temple.
—Fred M, mach Apperson Motor Car Co, b 433 5th East.
—Jane, student, b 1031 1st av.
—Ralph, lab, r 59 9th East.

We are Agents
for



Gas Tanks

MONARCH MOTOR CO.

FORD AUTOMOBILES

AUTOMOBILE SUPPLIES

142 MAIN ST.

BOTH PHONES 408

SALT LAKE CITY, UTAH June 11, 1909

1920 Census Salt Lake City, Utah

NAME: Elmer E Darling
 [Elmer E Darling]
 AGE: 56
 BIRTH YEAR: abt 1864
 BIRTHPLACE: Michigan
 HOME IN 1920: Salt Lake City Ward 4, Salt Lake, Utah
 STREET: 1st Ave
 RACE: White
 GENDER: Male
 RELATION TO HEAD OF HOUSE: Head
 MARITAL STATUS: Married
 SPOUSE'S NAME: May E Darling
 FATHER'S BIRTHPLACE: United States of America
 MOTHER'S BIRTHPLACE: United States of America
 ABLE TO SPEAK ENGLISH: Yes
 OCCUPATION: Capitalist
 EMPLOYMENT FIELD: Own Account
 HOME OWNED OR RENTED: Own
 HOME FREE OR MORTGAGED: Free
 ABLE TO READ: Yes
 ABLE TO WRITE: Yes
 NEIGHBORS: View others on page

HOUSEHOLD MEMBERS:	NAME	AGE
	Elmer E Darling	56
	May E Darling	47
		[48]
	Grace Darling	16
	Emma Anderson	53

Telephone
Wasatch
3034 and
3035

HI-HEAT COAL 246
SOLD EXCLUSIVELY BY
Wasatch Coal Co. SOUTH MAIN



**Cutlery
Guns
Ammunition
Athletic
Goods
Silverplated
Ware**

**Wholesale
Service to
Retail
Merchants
allows them
high total
Sales
with Low
Investment
Turnover**

**STREVELL-
PATERSON
HARDWARE
COMPANY**

262

R. L. POLK & CO'S

- Daniels Spencer B b 2129 3d East.
 " Thos W repr B & G Ry r Magna.
 " Viola steno Inter-Mtn Elec Co b 268 E 4th So.
 " Walter acct S L Route r 1165 E 6th So.
 " Wm A rms 204 S 4th West.
 " Wm H telr Nat Bank Repub b 268 E 4th So.
 Danielson Andw lab rms 69 Regent.
 " Ethel student rms 978 W 2d No.
 " Hycum mech rms 281 L.
 " John lab Arthur Plant r Magna.
 " John M shoe mkr Royal Shoe Repp Co r 654 Elder ct.
 " Otto lab r 237 G.
 " Rosella M died Oct 22 '20 aged 22.
 " Thelma cashr rms 978 W 2d No.
 Danto Takejda lab O S L r 610 W 9th No.
 Danish Consul (Thervald Orlob) 827 2d av.
 " Evangelical Lutheran Church 1st av cor E.
 Danks Thos C swchmn r 745 6th East.
 Danley Chester A mtr r 139 Pueblo.
 " Geo E waiter rms Wabash Hotel.
DANLEY GEORGE W. Mining and Oil Investments, Real Estate and Farm Lands, Sec-Treas Wyoming La Barge & Dry Piney Oil Co, Pres-Treas Danley-Lloyd Mining Co, Sulta 705 Walker Bank Bldg, Tel Was 2961, r 125 11th East, Tel Was 5747.
 " Lloyd M Co 705 Walker Bank Bldg.
 Dannenfelzer Leo moved to Germany.
 Danner Jasper M died Nov 15 '20 aged 75.
 Danos Peter waiter Magna Cafe rms Magna.
DANSIE A B. V-Pres Burton Lumber Co, r 31 7th East, Tel Was 9314-M.
 " Benj W farmer r 937 E 4th So.
 " Chas N skinn r 1400 10th East.
 " Christine (wid Robt) r 1211 Arapahoe av.
 " C Millard clk Vitagraph Co b 1175 E 13th So.
 " Effie I cashr rms 344 Garfield av.
 " Elsie R clk Walker's b 1211 Arapahoe av.
 " Eva L bkpr Pathe Exch rms 726 6th East.
 " Golda P student b 1400 10th East.
 " G Walter wool grower r 1420 Emerson av.
 " Jewell clk Amer Ry Exp b 1175 E 13th So.
 " Jos H mldr S L Eng Wks b 1211 Arapahoe av.
 Danvers Myrtle emp Paramount Lndry b Gordon la.
 " Paul S emp Paramount Lndry b Gordon la.
 Danzer McKinley emp Mut Creamery r 836 Jefferson.
 " Rhea wrapr Nelson-Ricks b 836 Jefferson.
 Darby Albt hlpr Felt Auto Sup Co r 363 W So Temple.
 " Fred S liumn Tel Co r 535 Garden av.
 " Grant M eng D & R G r 475 E 3d So.
 " John clk rms St Albans Hotel.
 Darcey see also Dorsey.
 " Herbt painter r 412 L.
 Dargan Albt G mach rms 220 S 9th West.
 " Richd J electn B G Elec Shop rms 220 S 9th West.
 Darger Edwd S student b t Princeton Apts.
 " P Stanford sls eng Johns-Manville r 1 Princeton Apts.
 Darke Albt L student b 833 Emerson av.
 " Apartments 1513 Lincoln.
 " Carl mech U S Air Mail Ser.
 " Edgar W carp Knox Bros r 3193 3d East.
 " Eva (wid Sidney W) r 360 W 6th So.
 " Jos B storekpr Hercules Powder Co b Baechas.
 " Jos S bkpr r 938 E 3d So.
 " Jos W dept mgr The Paris r 833 Emerson av.
 " Roy G mach r 220 Wasatch av.
 " Sidney G opr Tribune r 156 9th East.
 " Stella J opr Ottenheimer Co b 3193 3d East.
 " Venna steno S L Hdw b 360 W 6th So.
 " Wm clk Carbon Fuel Co b 646 E 7th So.
 Darlantis Harry hlpr O S L.
 Darling Alfd W mech Sins Co r 344 E 3d So.
 " Dorothy tchr Ensign Schl b 405 2d av.
 " Edgar S mgr Auto Exch Mkt r 849 E 18 So.
 " Elbert H slsmn r 405 2d av.
 " Elmer E mgr Monarch Motor Co r 1031 1st av.
 " Grace student b 1031 1st av.
 " Henry H liumn r 1030 3d East.
 " Howard lab B & G Ry r Bingham.
 " Minnie emp Troy Lndry b 544 E 3d So.
 " Ralph insp r 59 9th East.
 Darlington Eva nurse Fed Bd for Voc Education rms 316 Richmond Apts.

Sign in

Patents

Find prior art

Discuss this patent

View PDF

Download PDF



Tire alarm

US 1451291 A

ABSTRACT available in

IMAGES (1)



Publication number	US1451291 A
Publication type	Grant
Publication date	Apr 10, 1923
Filing date	Jun 14, 1920
Priority date	Jun 14, 1920
Inventors	Darling Elmer E
Original Assignee	Darling Elmer E
Export Citation	BiBTeX, EndNote, RefMan

Referenced by (1), Classifications (5)

External Links: USPTO, USPTO Assignment, Espacenet

DESCRIPTION (OCR text may contain errors)

CLAIMS available in

- Apr. 10, 1923.

' 1,451,291 E. E. DARLING TIRE ALARM Filed June 14, 192

. of the air in the tire.

Patented Apr. 10, 1923.

ELMERE. DARLING, of SA 'r LAKE CITY, omen.

Tran ALARM.-

Application filed June 14, 1920 7 Serial N O. 389,049.

To aZZ whom it may concern."

Be it known that I, ELM R E. DARLING, a citizen of the United States, and a resident of Salt Lake City, in the county of Salt Lake and State of Utah, have invented a new and useful Improvement in a Tire Alarm, as de scribed in the following specification and illustrated in the accompanying drawings, that form part of the same.

he present invention relates to tire alarms more particularly for use on pneumatic tires for automobiles and trucks.

The principal objects of this invention are to give Warning of the loss of air in apneuma tic automobile or truck tire; to warn the driver of an automobile against running the automobile on a pneumatic tire when the air has escaped from the to prevent the destruction of the tire by running it while deflated or nearly deflated The principal feature of the invention consists in the novel construction and arrangement of two swivel snaps and two steel springs, one end of the device to be fastened to the rim of the automobile wheel and the other end to be inserted between the tire and the tire rim and held in place by the pressure When the pressure of the air is released or nearly released the tension of the springs is designed to release the end fastened between the tire and rim thus leaving the tire alarm fastened at the other end to the rim. The end thus released is brought in contact with the fender or some other part. of the automobile with each revolution of the wheel; the report or noise of each contact giving warning to the driver or occupants of the car of the loss of air from tire.

One object of my invention is to provide a tire alarm that is cheap in construction and durable in service. Another object of my invention is to provide a tire alarm that will give warning of the loss of air from an automobile tire while in motion and prevent the destruction or serious injury of the tire which would result if the vehicle was kept in motion on the road after deflation or partial deflation of the tire. Another object of my invention is to provide an alarm which will give a warning when the tire is partially deflated while in use on the road.

With these and other objects in view my invention consists of the following parts, reference being had to the drawings forming a part hereof, in which like parts throughout the views are indicated by the same letters, and a similar tire by leakage flattened in the usual part of this application in which several views.

In the drawings Figure 1 is a plan view of the device practically showing it full size. Figure 2 is an elevation of an automobile wheel and tire with my device in place thereon.

The invention consists of a spiral spring of steel, with an eye hook B at one end and an eye hook D at the other end of said spring. To provide flexibility a swivel snap A is engaged with said eye hook B, and a similar swivel snap E is engaged with the said eye hook D. A thin flat metal strip F is engaged with the snap E, and said strip E may be made of any tough metal such as brass, steel or tinned iron.

In use the devices are fastened to the wheel rims J by boring at small holes through the edge of the rim and engaging the snap A in said hole or by using a ring in the hole and engaging the said snap A in the ring. The flat strip F is inserted between the ring J and the tire K and to such distance as will tension the spring C. The tire is then inflated and will cause the tire to grip and hold the said strip F while the tension of the spring will withdraw the strip F from between the tire and rim and the device will be freed at its strip end but will be held at the snap A end and the free end will be brought in contact with the fender or some other portion of the vehicle with each rotation of such contact will of the vehicle of tire.

Having thus described my invention I desire to secure by Letters Patent and claim 1. In a tire alarm the combination with a pneumatic tire and rim on which it is carried, of a spiral spring secured at one end by flexible connection to said rim; and a flat strip connected with the other end of said spring and adapted to have a portion of said strip held between the said tire and rim; when the tire is inflated and to be released when the tire is deflated.

2. In a tire alarm the combination with a should become partially deflated give warning to the driver the loss of air from the pneumatic tire and rim on which it is used,

manner, which inflation as long as the tire is inflated. If

wheel was in use on the road the of a portion of an inner rim, and the noise of of a spring flexibly connected at one end to tire is deflated in order that the released portion of said rim, and a thin metal strip flexibly connected at one end to the other end of said spring, and parts of the vehicle as an alarm, adapted to have a portion held between said rim and tire.

When the tire is inflated, and to Witnesses:

be released by the tension of said spring and K. B. BUTLER, rotation of the Wheel of the vehicle when the T. D. LEWIS.

REFERENCED BY

Citing Patent	Filing date	Publication date	Applicant	Title
US3472197 *	Jan 25, 1968	Oct 14, 1969	Ford Motor Co	Low tire pressure warning device

* Cited by examiner

CLASSIFICATIONS

U.S. Classification	116/34.00R, 116/34.00A
International Classification	B60C23/06
Cooperative Classification	B60C23/06
European Classification	B60C23/06

UNITED STATES PATENT OFFICE.

ELMER E. DARLING, OF SALT LAKE CITY, UTAH.

TIRE ALARM.

Application filed June 14, 1920. Serial No. 389,049.

To all whom it may concern:

Be it known that I, ELMER E. DARLING, a citizen of the United States, and a resident of Salt Lake City, in the county of Salt Lake and State of Utah, have invented a new and useful improvement in a Tire Alarm, as described in the following specification and illustrated in the accompanying drawings, that form part of the same.

The present invention relates to tire alarms more particularly for use on pneumatic tires for automobiles and trucks.

The principal objects of this invention are to give warning of the loss of air in a pneumatic automobile or truck tire; to warn the driver of an automobile against running the automobile on a pneumatic tire when the air has escaped from the tire by leakage; to prevent the destruction of the tire by running it while deflated or nearly deflated.

The principal feature of the invention consists in the novel construction and arrangement of two swivel snaps and two steel springs, one end of the device to be fastened to the rim of the automobile wheel and the other end to be inserted between the tire and the tire rim and held in place by the pressure of the air in the tire. When the pressure of the air is released or nearly released the tension of the springs is designed to release the end fastened between the tire and rim thus leaving the tire alarm fastened at the other end to the tire rim. The end thus released is brought in contact with the fender or some other part of the automobile with each revolution of the wheel; the report or noise of each contact giving warning to the driver or occupants of the car of the loss of air from tire.

One object of my invention is to provide a tire alarm that is cheap in construction and durable in service. Another object of my invention is to provide a tire alarm that will give warning of the loss of air from an automobile tire while in motion and prevent the destruction or serious injury of the tire which would result if the vehicle was kept in motion on the road after deflation or partial deflation of the tire. Another object of my invention is to provide an alarm which will give a warning when the tire is partially deflated while in use on the road.

With these and other objects in view my invention consists of the following parts, reference being had to the drawings form-

ing a part of this application in which similar letters indicate like parts throughout the several views.

In the drawings Figure 1 is a plan view of the device practically showing it full size. Figure 2 is an elevation of a portion of an automobile wheel and tire with my device in place thereon.

The invention consists of a spiral spring C, preferably made of steel, with an eye hook B carried in one end, and a similar eye hook D carried in the other end of said spring. To provide flexibility a swivel snap A is engaged with said eye hook B, and a similar swivel snap E is engaged with the said eye hook D. A thin flat metal strip F is engaged with the snap E, and said strip E may be made of any tough metal such as brass, steel or tinned iron.

In use the devices are fastened to the wheel rims J by boring a small hole through the edge of the rim and engaging the snap A in said hole or by using a ring in the hole and engaging the said snap A in the ring. The flat strip F is inserted between the ring J and the tire K and to such distance as will tension the spring C. The tire is then inflated in the usual manner, which inflation will cause the tire to grip and hold the said strip F as long as the tire is inflated. If the tire should become partially deflated while the wheel was in use on the road, the tension of the spring will withdraw the strip F from between the tire and rim and the device will be freed at its strip end but will be held at the snap A end and the free end will be brought in contact with the fender or some other portion of the vehicle with each rotation of the wheel, and the noise of such contact will give warning to the driver of the vehicle of the loss of air from the tire.

Having thus described my invention I desire to secure by Letters Patent and claim:—

1. In a tire alarm the combination with a pneumatic tire and rim on which it is carried, of a spiral spring secured at one end by flexible connection to said rim; and a flat strip connected with the other end of said spring and adapted to have a portion of said strip held between the said tire and rim when the tire is inflated and to be released when the tire is deflated.

2. In a tire alarm the combination with a pneumatic tire and rim on which it is used,

of a spring flexibly connected at one end to said rim, and a thin metal strip flexibly connected to the other end of said spring, and adapted to have a portion held between said tire and rim when the tire is inflated, and to be released by the tension of said spring and rotation of the wheel of the vehicle when the

tire is deflated in order that the released portion of spring and strip may contact with parts of the vehicle as an alarm.

ELMER E. DARLING.

Witnesses:

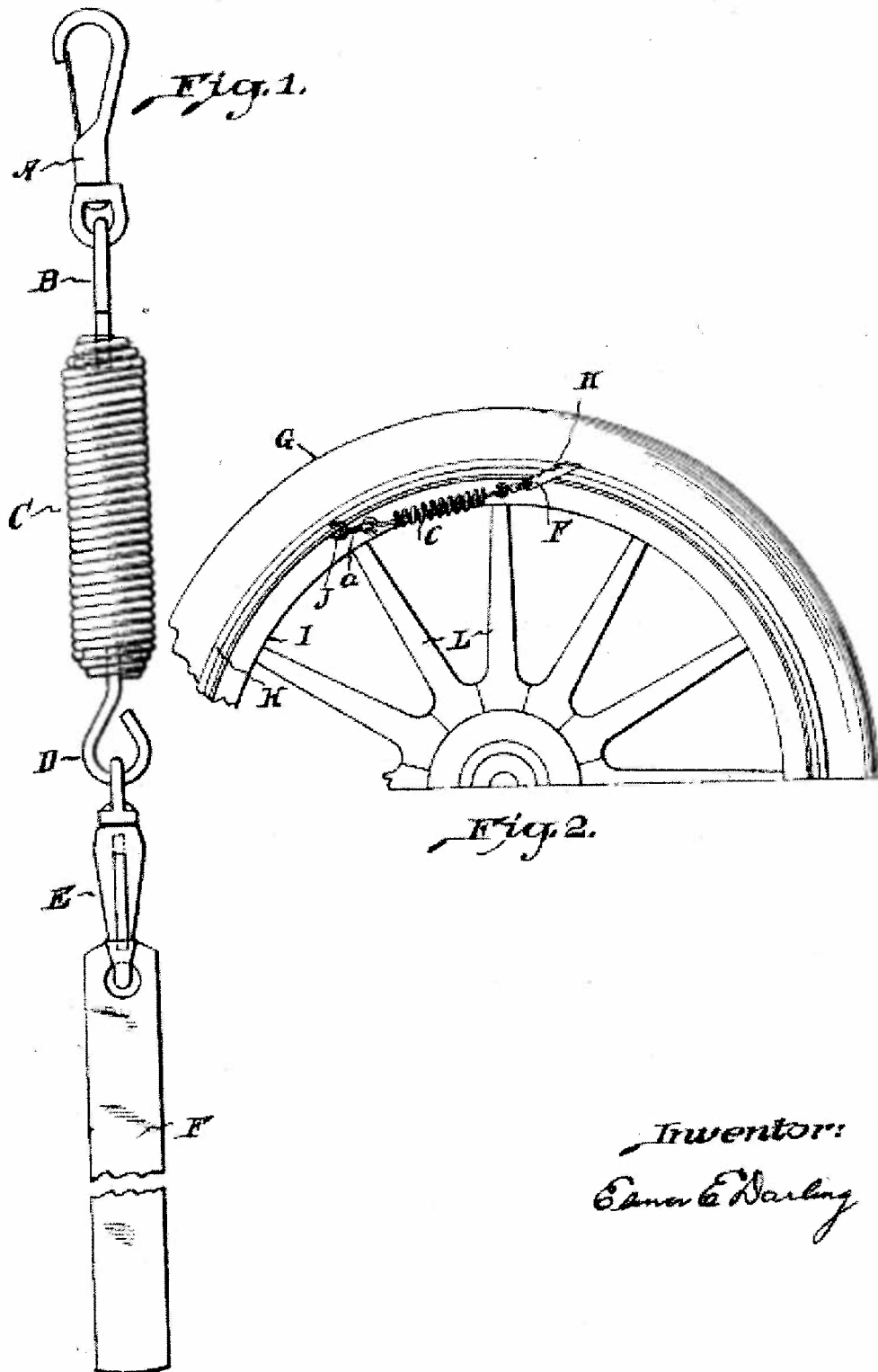
K. B. BUTLER,
T. D. LEWIS.

Apr. 10, 1923.

1,451,291

E. E. DARLING
TIRE ALARM

Filed June 14, 1920



Inventor:
E. E. Darling

All Daughters of Utah Pioneers Obituary Scrapbook results for Phoebe*
Darling

Obituary Scrapbook
Elmer E. Darling

Mr. Darling was born on January 6, 1863, in Pawpa, Mich., to Edgar F. and Phoebe A. Darling. Forty-seven years ago, he came to Utah and had been engaged in the real estate business until his retirement in 1926.

[View Full Context](#)

Obituary Scrapbook
Elmer E. Darling

Surviving are his widow, Mae E. Ellerbeck Darling; two daughters, Mrs. Albert B. Fisher of Los Angeles and Mrs. Jack P. Strickley of San Diego, Cal.; five grandchildren and a sister, Mrs. Frank E. McGurrin of California.

[View Full Context](#)

Obituary Scrapbook
Elmer E. Darling

Funeral plans await arrival of relatives in Salt Lake City.

If Elmer died in 1937 and the obit states he came to Utah 47 years ago, then I presume he came in 1890.

Family Group Record

Page 1 of 1

Husband Elmer Elsworth Darling

Born	6 Jan 1863	Place	PawPaw, VanBuren, Michigan, USA
Chr.		Place	
Died	8 Jun 1937	Place	Holladay, Salt Lake, Utah, USA
Buried		Place	
Married	28 May 1892	Place	Salt Lake City, Salt Lake, Utah, USA
Husband's father	Edgar D Darling		
Husband's mother	Pheobe Alva Brockway Godfrey		

Wife May Ellerbeck

Born	21 Dec 1871	Place	Salt Lake City, Salt Lake, Utah, USA
Chr.		Place	
Died	30 Oct 1940	Place	Salt Lake City, Salt Lake, Utah, USA
Buried		Place	
Wife's father	Thomas Whitton Ellerbeck		
Wife's mother	Emma Spence		

Children List each child in order of birth.

1 F Jane or Jennie Darling

Born	6 May 1893	Place	Salt Lake City, Salt Lake, Utah, USA
Chr.		Place	
Died	3 Apr 1936	Place	Salt Lake City, Salt Lake, Utah, USA
Buried		Place	
Spouse	Dale Langwell Smith		
Married	31 Oct 1916	Place	Salt Lake City, Salt Lake, Utah, USA
Spouse	Roy I Sipherd		
Married	7 Oct 1929	Place	Salt Lake City, Salt Lake, Utah, USA

2 F Elma Darling

Born	23 Jan 1897	Place	Salt Lake City, Salt Lake, Utah, USA
Chr.		Place	
Died	27 Aug 1979	Place	San Bernardino, San Bernardino, California, USA
Buried		Place	
Spouse	Albert Bernhardt Fisher		
Married	2 Jun 1917	Place	Salt Lake City, Salt Lake, Utah, USA

3 F Grace Darling

Born	18 Apr 1903	Place	Salt Lake City, Salt Lake, Utah, USA
Chr.		Place	
Died	16 Feb 1990	Place	San Diego, San Diego, California, USA
Buried		Place	
Spouse	Jack Penfold Strickley		
Married	Abt 1928	Place	Salt Lake City, Salt Lake, Utah, USA

Prepared by Darling

Phone

E-mail address

Date prepared 30 Dec 2014

Address

USA

State and Local Obituaries

Elizabeth M. Whitaker

CENTERVILLE—After nearly a century of active life, Mrs. Elizabeth Mills Whitaker died Monday at 8:30 p. m. at the residence of a daughter, Mrs. Charles Parrish, of Centerville, of infirmities incident to age.



She was born on March 7, 1839, in Douglas, Isle of Man, to John and Elizabeth Hall Mills. After their conversion to the L. D. S. church, the family sailed for America in 1841. They first lived in Nauvoo, Ill., until 1844, then moved to Madison, Drakersville and to Council Bluffs, Iowa, successively.

In the spring of 1852 the family left for Utah by ox team in the Captain Wilkes company, arriving late in the summer in Salt Lake valley. She was married to Charles Oakden in 1855. The following March he was drowned in the Jordan river, and in September of 1858 she married Thomas Whitaker.

Following the death of her husband she became a nurse. She was a charter member of the Daughters of Utah Pioneers, active in the L. D. S. church and prominent in charity organizations.

Seven sons and daughters survive, Mrs. Elizabeth Emily Barber, Mrs. Mary Alice Parrish, Mrs. Josephine W. Folsom and Joseph James Whitaker, Centerville; John Mills Whitaker, Salt Lake City; Mrs. Aveline W. Halverson, Beverly Hills, Cal., and Dr. Walter E. Whitaker, Kayville; 60 grandchildren, 110 great-grandchildren and eight great-great-grandchildren.

Funeral services will be conducted Sunday at 2 p. m. in the Centerville L. D. S. First ward chapel. Burial will be in Centerville cemetery.

Walter E. Kelson

Walter E. Kelson, 67, former Salt Lake City musician, died Saturday at his home in Los Angeles, according to word received by local relatives Tuesday.

Born December 21, 1869, in Salt Lake City, he was a son of John H. and Mary Nation Kelson, early Utah pioneers. Mr. Kelson had taught piano here for many years, moving to California in 1927.

Surviving, besides his widow, Mrs. Clara Carr Kelson, are a son, Walter J. Kelson of Los Angeles; two daughters, Mrs. Henry J. Stone and Mrs. H. Ernest Naegelin of Salt Lake City.

Funeral services will be conducted Sunday at 1:30 p. m. in the Jefferson L. D. S. Ward chapel, 1510 Richards street.

Elmer E. Darling

Elmer Elsworth Darling, 74, died Tuesday at 3 a. m. at his residence, 5619 Highland drive, after a prolonged illness resulting from a fall from a ladder two years ago.

Mr. Darling was born on January 8, 1863, in Pawpa, Mich., to Edgar F. and Phoebe A. Darling. Forty-seven years ago, he came to Utah and had been engaged in the real estate business until his retirement in 1926.

Surviving are his widow, Mae E. Ellerbe Darling; two daughters, Mrs. Albert B. Fisher of Los Angeles and Mrs. Jack P. Strickley of San Diego, Cal.; five grandchildren and a sister, Mrs. Frank E. McGurkin of California.

Funeral plans await arrival of relatives in Salt Lake City.

Andrew Easton

KEMMERER, Wyo.—Andrew Easton, 81, a pioneer of this mining district, died at his home in Oakley Monday of causes incident to age. He came to the old mining camp of Almy, near Evanston, from his home in Scotland, then to Diamondville in 1898 and spent the last 29 years of his life in Oakley.

Mr. Easton had followed mining activities all through his long residence in Wyoming and retired only a few years ago.

Survivors are his widow; a sister, Mrs. Thomas Hood; four sons, Andrew Jr., George, Alex and John Easton; six daughters, Mrs. Jane McVicar, Mrs. Andrew McVicar, Mrs. Mary Helen Mosby, Mrs. Lowell Painter, Marie and Grace Easton.

Mr. Easton was bishop of the Diamondville L. D. S. ward for many years and a patriarch later.



Melissa S. Johnson

GLENWOOD — Mrs. Melissa Stratton Johnson, 91, died at her home here Monday of ailments incident to age.

She was born in Hancock county, Missouri, on December 3, 1845, a daughter of Oliver and Harriett Stratton. She came with her parents in 1848 to Utah, where she resided in Dixie until she was married to Powell Johnson on October 8, 1863, of Draper. She had resided in Glenwood since that time, where she had been active in church and Relief society work.

Surviving are four daughters, Mrs. Zoe Ence of Richfield; Mrs. Minnie Killian of Long Beach, Cal.; Mrs. Alice Peterson of Glenwood, and Mrs. Eliza Ellis of Los Angeles; two sons, James Johnson of Glenwood and Will Johnson of Annabella; three sisters, Mrs. Clara Griffin of Mesa, Ariz.; Mrs. Anna Mae Smith of Los Angeles and Mrs. Harriett Duffin of Glenwood; 50 grandchildren; 82 great-grandchildren and 25 great-great-grandchildren.

Mabel Pratt Warner

PROVO—Mabel Pratt Warner, 65, wife of H. M. Warner of Rexburg, Idaho, and former Provo resident, died Monday at her home in Rexburg of anemia condition, according to word received here. She had been in ill health for some time.

She was born October 14, 1871, in Salt Lake City, a daughter of Moroni L. and Caroline Beebe Pratt. When a young girl she moved to Provo with her parents and attended the public schools, she was among the first graduates of the Brigham Young university. She taught school here and in different parts of Utah, Nevada and Idaho for many years. She was married in June, 1894, in Provo. They moved to Idaho in 1922, where they have since lived. Mrs. Warner had served as city librarian at Rexburg since 1922.

Surviving, besides her husband, are five sons and daughters: Harold Warner, Dillon, Mont.; Mrs. Thelma W. Brown and Mrs. Hester W. Davenport, Rexburg, Idaho; Adrian Warner, Chicago, Ill.; Parker Warner, Washington, D. C.; seven brothers and sisters, Irving L. Pratt, American Fork; Mrs. Ethel B. Thomas and Carl M. Pratt, Salt Lake City; Mrs. Olive P. Anderson and Thornley O. Pratt, Los Angeles, Cal.; Parley P. Pratt, San Francisco, Cal., and M. Lester Pratt, Kemmerer, Wyo.

Funeral services will be conducted at Rexburg Thursday at 1 p. m. Following the services the body will be brought to

1. PLACE OF DEATH

County Salt Lake

STATE OF UTAH

State Board of Health File No. 1052

Precinct

CERTIFICATE OF DEATH

Town or City HolladayNo. 5619 Hyland Drive St.

Ward

2. FULL NAME Elmer Ellsworth Darling

(If death occurred in a hospital or institution, give its NAME, location of street and number)

3. Residence: No. 5619 Hyland Drive

St.

(a) Length of residence in city or town where death occurred

(Usual place of abode)
Years 47 Months Days

(b) How long in U. S., if of foreign birth

(If non-resident give city or town and State)

Years Months Days

PERSONAL AND STATISTICAL PARTICULARS

4. SEX Male 5. COLOR OR RACE White 6. SINGLE, MARRIED, WIDOWED, OR DIVORCED (Within the Year) Married7. IF Married, Widowed, or Divorced HUSBAND OF (or) WIFE OF Mae E Ellerbeck8. DATE OF BIRTH (month, day, and year) January 6th 18639. AGE 74 Years 5 Months 1 Days IF LESS than 1 day, _____ hrs. _____ min.

10. OCCUPATION OF DECEASED

(a) Trade, profession, or particular kind of work done, as engineer (type of), miller, bookkeeper, etc. Real Estate(b) Industry or business in which work was done, as railway, mine (kind of), bank, etc. Rentals-Self(c) Date deceased last worked at this occupation (month and year) 1926 (d) Total time (years) spent in this occupation11. BIRTHPLACE (City or Town) Paw Paw (State or Country) Michigan12. NAME OF FATHER Edgar S Darling13. BIRTHPLACE OF FATHER (State or Country) Michigan14. MAIDEN NAME OF MOTHER Pheobe A Godfrey15. BIRTHPLACE OF MOTHER (State or Country) Michigan16. INFORMANT (Signature) Shirley Ashington Trickey Address 5619 Hyland Drive17. BURIAL, CREMATION, OR REMOVAL Place Salt Lake City Date June 11, 193718. UNDERTAKER Nell O'Donnell Address Salt Lake City, Utah19. FILED May 10 1937 Henry V Ballou REGISTRARREGISTERED NUMBER 11

7-15-35 10M Quality Form

19. DATE OF DEATH

(Month, day, and year) June 3th 193720. I HEREBY CERTIFY That I searched deceased from June 1 1937 to June 7 1937last seen alive on June 7 1937Death occurred on the date stated above, at 3 A P.M.
The principal cause of death and related causes of importance were as follows:Prostate (51)

Other contributory causes of importance:

Uremia 2If operation, date of _____
Condition for which performed _____Was there an autopsy? NoIf death was due to external causes (violence) list in also the following:
Accident, suicide, or homicide _____ Date of injury _____Where did injury occur? _____ (Specify day or town, county and State)
Specify whether injury occurred in industry, in home, or in public place.

Manner of injury _____

Name of injury _____

Was disease or injury in any way related to occupation of deceased? NoIf so, specify Yes John J. Smith 1937 Murray

N. B. WRITE PLAINLY WITH UNFADING INK—THIS IS A PERMANENT RECORD. Every entry in this certificate should be made EXACTLY. PHYSICIANS should give the cause of death in plain terms, and it may be properly classified. Exact statement of occupation should be given on back of certificate.

EXAGGERATED FOR ENDING

20628,
WILL

ESTATE OF

Elmer E Darling
Deceased

RECORDED IN PROBATE

Book No. 152 Page 154

Indexed by Z.C.

Recorded by Z.C.

Proof read by Z.C. & ERL

FILED IN THE CLERK'S OFFICE

Salt Lake County, Utah

JUN 24 1937

WILLIAM J. NORTH, Clerk 3rd Dist. Court

By Parker B Cady
Deputy Clerk

I Elnor E. Darling, being of sound
mind make this my last will, revoking
all other wills heretofore made.
I leave all my property, both real
and personal to my wife, May E. Darling
in trust however for the following
purpose, she to have the income from
my entire estate during her life time.
At her death the income to go to ~~my~~
my wife & two daughters, Elma & Grace to serve
as executors without bond
my granddaughter Sally to be cared for
by my wife, Elma & Grace till she is
eighteen years old if they have guardianship
over her.
In case of the death of Grace her share of income
to go to her child or children and to
Sally. In case of death of Elma her share
of income to go to her children -
at the death of both Elma &
Grace the estate to be divided
equally among my grandchildren.
In case of the sale of any of my property
the proceeds of the sale to be
reinvested, except what is necessary
to pay my ^{debts} and back taxes and I hereby
give my wife, May E. Darling power to sell any
thing for her maintenance or to pay back taxes.

#20628

Elnor E. Darling

Salt Lake City UT
May 8 1936.

I Elmer E. Darling, being of sound mind make this my last will revoking all other wills theretofore made. I leave all my property, both real and personal to my wife May E. darling in trust however for the following purpose, she to have the income from my entire estate during her lifetime. At her death the income to go to (the paper was creased, but I believe it reads daughters, Elma and Grace. My wife and two daughters, Elma and Grace to serve as executors without bond. My Granddaughter Sally to be cared for by my wife, Elma and Grace till she is eighteen years old if they have Guardianship over her. In case of the death of Grace her share of the income to go to her child or children and to Sally. In case of death of Elma her share of the income to go to her children. At the death of both Elma and Grace the estate to be divided equally among my grandchildren. In case of the sale of any of my property the proceeds of the sale to be reinvested, except what is necessary to pay my debts and back taxes and I hereby give my wife May E. Darling power to sell anything for her maintenance or to pay back taxes.

Salt Lake City, Ut
May 8, 1936

Elmer E. Darling

#20628

The Remington Collector's **JOURNAL**



3rd Quarter 2014

\$18⁰⁰

**Remington
Model 1894
High-Grade Shotguns**

