

# SHELL CARVED BOWIE KNIFE

By Wayne McNeese

Here is a previously unpublished bowie knife, made by a very skilled craftsman. That craftsman is no doubt a L. H. Hasett. Cut into the top surface of the handle is "L. H. Hasett maker, 49 Fries Ferry" in script.

I was told by the owner that it had turned up in a flea market in Connecticut and purchased there by his father.

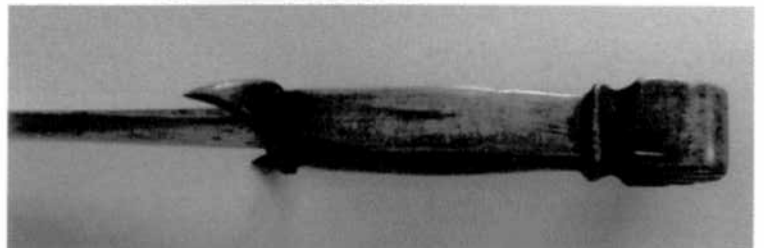
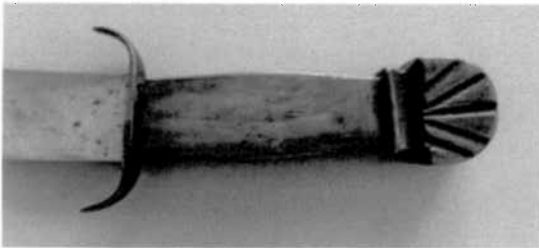
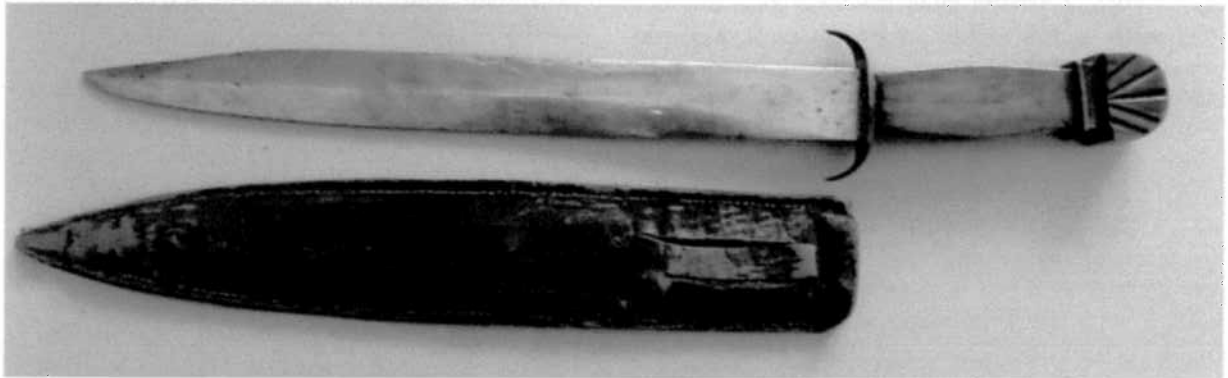
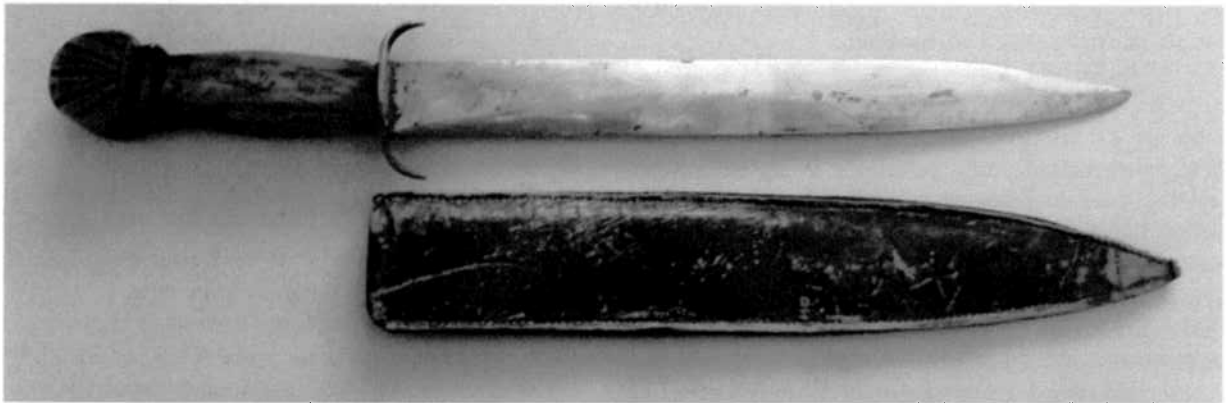
The knife is in extraordinarily good condition with the original polish on the blade and only a small amount of staining. It sports a maple 1-pc. Handle with a carved, shell pommel. The shell carving is very pleasing and is a feature that I have never seen quite like this on an American-made bowie. The knife is designed with a feature where the handle

and blade are at an angle, with the blade turned slightly upward, 7 degrees, when the handle is held horizontally.

The blade has a slight sharpened clip and is sharpened on both edges with a median ridge. The guard is iron and curves forward with both ends tapering to sharp points.

The bowie still has its original leather scabbard. Overall length is 16 1/2" lg. The blade is 11 7/8" by 1 3/16" wide. It is just under 1/4", measuring 7/32" thick at the median ridge.

I would appreciate knowing if anyone has seen a similar knife by this same maker.



## **Confederate? Bowie Knife**

This knife is 16-1/2 inches overall has an 11-3/4 inch blade with a clip point. The hilt appears to be 1 which is signed "L.H. HASETT m