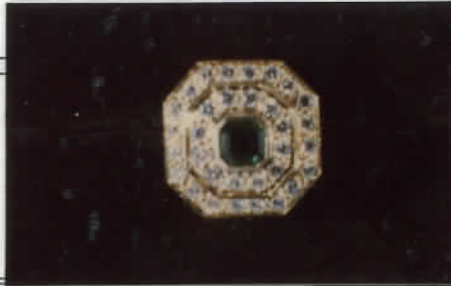


gemological consultation  
gem identification  
appraisals  
estate jewelry

augusta, maine  
622-7445

## JEWELRY APPRAISAL

Property of  
Address



These estimated replacement costs are based only on estimates of the quality of the stones (unless specifically stated that the stones were removed and graded). We assume no liability with respect to any action that may be taken on the basis of this appraisal.

### DESCRIPTION OF ARTICLE

#### LADY'S RING

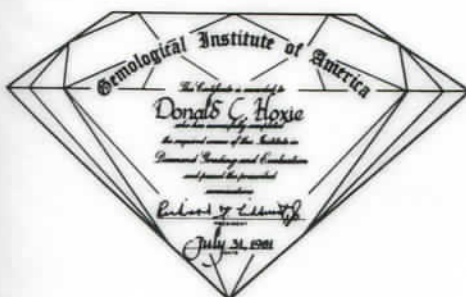
An octagon yellow gold motif centered with a hammer mounted 1.05 carat emerald framed with bead mounted diamond meles (1.15 ct TW) having a gross weight of approximately 7.0 dwt. The piece has no maker's mark, but is stamped 18K testing 18K on an RS Mizar M24 Gold Tester. The stones are described as follows:

One square step cut emerald with dimensions of 6.0 x 6.0 x 4.29 mm estimated by formula to weigh approximately 1.05 carats; GIA clarity grade is VS2; GIA color grade is estimated to be bG 5/4 determined by using GIA Gem Set under a full Spectrum VITE-LITE; 20% brilliance, 40% window, 40% extinction; good symmetry and polish.

Twelve 2.3 mm and twenty 2.0 mm full cut diamond meles estimated by formula to have a total diamond weight of approximately 1.15 carats; GIA clarity grades range from VVS1 to VS1; average GIA color grade is estimated to be G-I; very good symmetry and polish.

Estimated retail replacement cost in a fine jewelry store	08/21/99
.....	\$6000.00
Maine State Sales Tax	330.00
Total	\$6330.00

Donald C. Hoxie, Gemologist *D. Hoxie* Important limitations on reverse side



Gemological Institute of America  
This diploma is awarded to

Donald C. Hoxie

in recognition of having completed the required course of this Institute in Diamond Grading and Identification and the required practical application examination and passing the prescribed examination as required by the Institute for completion of a

Gemologist

Rev. November 3, 1999

*Robert L. Campbell*  
President

