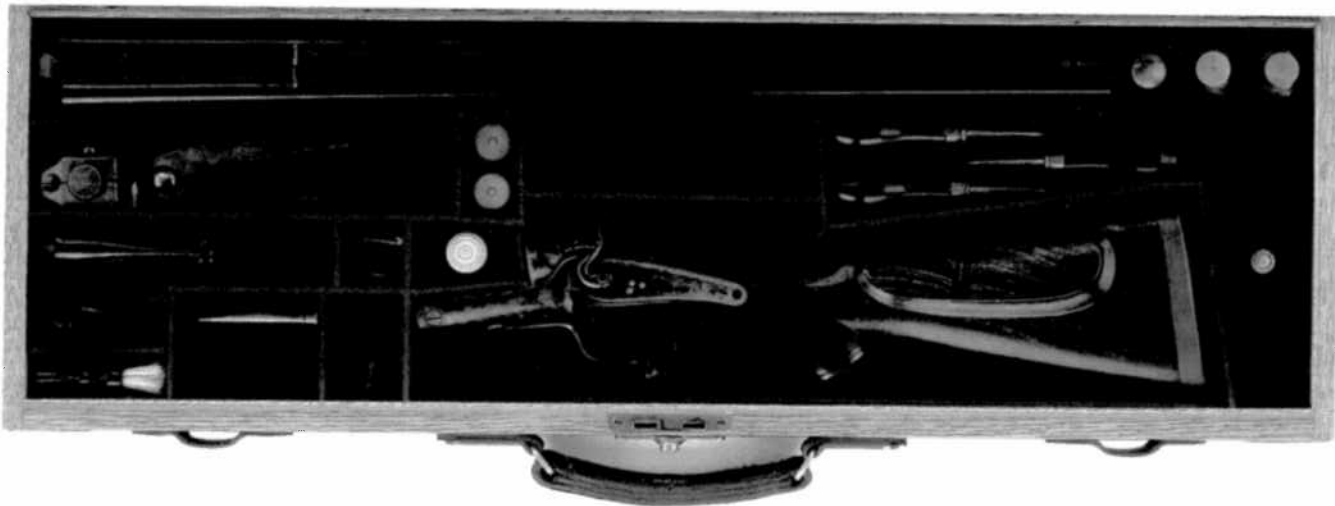
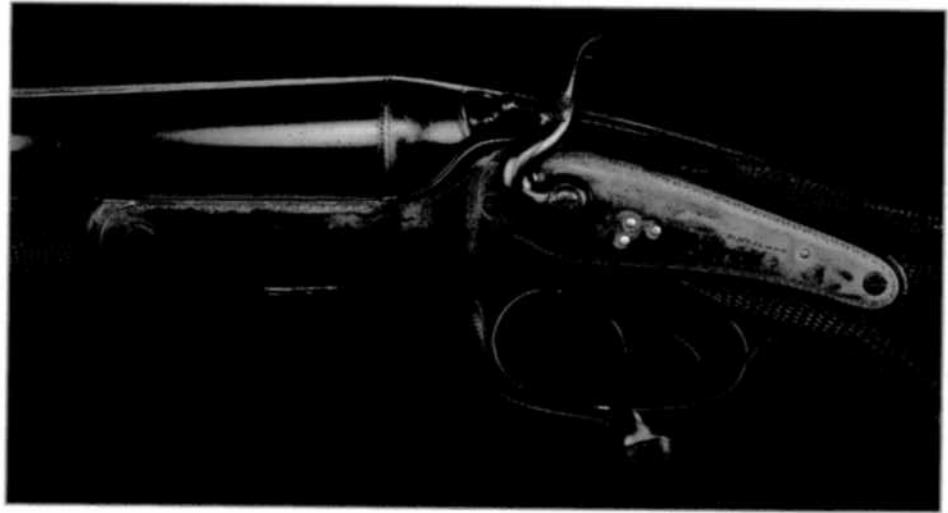
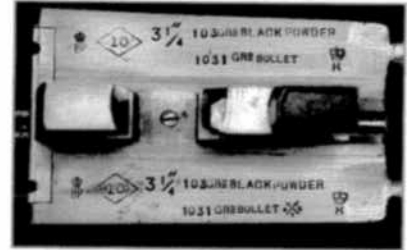




1286. HOLLAND & HOLLAND HAMMER DOUBLE RIFLE WITH CASE AND ACCESSORIES. SN 11145.

Cal. 10ga. Double triggers. Rebounding locks. Jones underlever. 27" Dove-tailed steel bbls w/ broad flat rib w/ single standing platinum lined rear express sight, longitudinally dove-tailed front sight w/ silver and flip-up beads. The rear portion of the rib is file cut and terminates in a large dolls head extension. The bbl is engraved "Holland & Holland, 98 New Bond Street. London." on the top of the right bbl and "Winners of all the "field" rifle trials. London. 1883." on the left. The bbl flats are stamped w/ Birmingham black powder re-proof marks for 3-1/4" chambers "103 grains black powder" and "1031 Grs bullet". The bottoms of the bbls are stamped SN "1145" (1892). The case hardened action has back action side locks w/ rebounding low profile hammers and Jones underlever, and is border engraved. The trigger guard is engraved w/ SN "11145". The lightly streaked and figured English walnut full pistol grip buttstock measures 14-1/2" over a Silvers type pad and features eyes for sling, vacant silver oval on toe line, cheek piece for right handed shooter, steel pistol grip cap, and 16 LPI borderless checkering. The splinter forend has a lever release and is checkered to match buttstock. Drop at heel: 2", drop at comb: 1-5/8". Weight: 11 lbs 8 oz. Oak and leather case has brass corners, round central medallion on the lid. Dark red velvet interior w/ Holland & Holland label. Accessories include 2 brass oil bottles no. 11145 stamped on the tops, 3 ebony handled turn screws, brass striker case, bone parts bottle, 2 brass 10 bore snap caps, 10 bore wad cutter, rosewood handled whisk broom, BGI recapper, ring type stuck case remover, 2-pc ebony cleaning rod, and a large brass single cavity 10 bore conical bullet mold w/ base plug stamped w/ initials "J.G" and no. "11145." There is one empty brass cartridge case, a chamber cast, and some wads. PROVENANCE: Transcription of a letter from Holland & Holland dated Mar 3, 1999 w/ particulars of gun, and a copy of the record book showing that the rifle was made for a Mr. Lethbridge. CONDITION: Excellent as refurbished. Letter of provenance states that after its last trip to Africa, at which time it took 2 cape buffalo, this rifle was returned to Holland & Holland to be redone. It has not been taken on a hunt since that time. Rifle currently exhibits a condition commensurate w/ that statement, but shows a few very light handling marks in wood. There are a couple small chips of wood missing from the forend in front of the bottom of the forend iron, and behind the take down lever. The action is tight and on face. Bores are very strong, shiny, but w/ scattered light pitting throughout. Case is very fine w/ smooth leather w/ a few scuffs. Interior partitions are tight. Velvet is clean. Accessories are very good. These large caliber bore rifles are fairly scarce. This one cries to go back to Africa. 4-33446 MGM32 (17,500-27,500)





2000

~~1780~~ 1960's Sweden
O-C-1 THS OX some red cam
R-Thorn in 1 day 1964-70's 3000-1955
O-X 1945 film or photo this
Glowing over R P THS BP
Cin say the words Burn passed.
leaving red/care flame from

100

HOLLAND & HOLLAND
10 BORE BLACK POWDER DOUBLE HAMMER RIFLE
Serial No. 11145

This 10 bore double rifle with 3 1/4" chambers was made in 1892 for a Mr. Lathbridge. It is all original as verified by factory records. On its last trip to Africa it took two Cape Buffalo. After the hunt, as was customarily done with double rifles, it was factory refinished by Holland & Holland. It has not been taken on a hunt since that time, leaving it in the superb and near new condition that it is found today.

It has 26 7/8" steel barrels with full length rifling, and full length rib, which is filed the first 6" to the fixed rear sight, and smooth the balance of the length of the rib. It has inscribed on the top of the barrels: "Holland & Holland, 98 New Bond Street, London, and Winners Of All The Field' Trials London 1883." It has a wide fixed rear sight and a fixed front sight with an additional pop-up ivory moon sight. It is sighted for 50 yards and regulated for 103 grains black powder and 1031 grains bullet, and is so inscribed on the flats on the under side of the barrels.

It is a low hammer back action rifle with rebounding locks inscribed "Holland & Holland" on each of the sides. It is an underlever rifle with 5 7/8" strap, pistol hand stock, with steel grip cap, cheekpiece, rubber recoil pad, eyes for sling, and lever forend. It has a LOP of 14 1/2" and an approximate weight of 11 pounds, 4 oz, with an overall length of 43 3/4," with a stock set off of 1/4" at the comb and 3/8" at the toe.

The rifle is encased in its oak and leather trunk case with accessories, the majority of which are numbered to the gun. It is a rare occurrence to find a Holland & Holland 10 bore double rifle. To find it in this condition is even more rare, and to find it in its oak and leather case with its accessories numbered to the gun, is a most rare opportunity.

33446

HOLLAND & HOLLAND
10 BORE BLACK POWDER DOUBLE HAMMER RIFLE
Serial No. 11145

The following is a transcription of the original factory records concerning this gun as sent in a fax from Mr. Edward Jeffery of Holland & Holland, London, to Mr. Leslie Paul on March 3, 1999. (I had asked Mr. Paul to check on the gun for me.)

Dear Mr. Paul:

Thank you for your fax dated 2 March addressed to Mr. Billey who has retired from the company.

Please find the following photocopy from our records regarding the 10 bore Holland & Holland no. 11145. If it is not clear, please let us know and we will send you a copy in the post. However, your address on your fax is unclear.

The rifle was made in 1892 and has rebounding locks and a 3 1/4" chamber. Only basic loading data is given.

When guns are returned to us they are indexed under the customer's name. These day to day records go back only a few decades so I regret I am unable to furnish you with any further information.

Yours sincerely,

Edward Jeffery
for Holland & Holland Limited

The following is a copy of the factory records for this gun as faxed:

1892

#11145

Lethbridge

10 bore Rifle, back action 5 5/8 strap, extended rib, lever over guard, lever forend, rebounding locks, low hammers, eyes for sling, pistol hand, cheekpiece, recoil heelplate, bend 1 7/8 1/16 - 1 3/8 1/16, length 14 1/2 & 14 1/2, set off 1/4 - 3/8, chambers 3 1/4 inch, plain finish, shot with 8 drams SP, ball mold 54, sight .50

APR-05-99 01:55 PM LES. PAUL. CAROL. BALL.

905 721 8113

P. 02

16 ~~22~~ Ber low action built
 Grip 1 1/2" Power spring 9
 (1892) Royal hammerlock right hand
 right choke. Waterfall. Shot
 barrel extra pair of 180 1/2
 4.577 barrel fitted in 1/2 D. 1/2
~~Keyway perfect~~
 was originally 20000 perfect
 Band 20000 perfect
 Length - Shot with 33gms shot
 2 Set off
 112
 113
 112
 119
 98
 109
 118
 115
 122
 138
 188
 111 1/2

Letbridge
 10 bar. Bluff. back action
 5 1/2" shot. silver set. low
 over guard bar. front
 (946) rebounding lock. low hammer
 eye for this pistol hand
 Cheshire. Reccil. hospital
 Band 1 1/8" - 1 3/8"
 Length - 14 1/2 - 14 1/2
 2 Set off - 1/4 - 3/8
 Chamber 3 1/4 inch
 Plain finish
 Shot with 8 grains Sp 11 1/4
 ball should be sight 50

APR-25-99 01:35 PM LES. PAUL. CAROL. BALL.

905 721 2113

P. 01

03-03-99 WED 15:02 FAX 0171 409 3283

HOLLAND AND HOLLAND

0.



FACTSIMILE TRANSMITTAL SHEET

Dear Mr Paul,

Thank you for your fax dated 2 March addressed to Mr Filley, who had called from the company.

Please find following a photocopy from our records regarding the 10-bore Holland & Holland no. 11145. If it is not clear, please let us know and we will send you a copy in the post. However, your address on your fax is unclear

The rifle was made in 1892 and had rebounding locks and a 3 1/4" chamber. Only basic loading data is given.

When guns and rifles are returned to us they are indexed under the customer's name. These day to day records to back only a few decades so I regret I am unable to furnish you with any further information.

Yours sincerely,

Edward Jeffery
for Holland & Holland Limited



HARRI

5 APRIL 99

THE CROSSED SWORDS WITH
O.C-1 THUS ~~OXX~~₁C WOULD INDICATE
RE-PROOF IN 1 July 1934 TO - 30 June 1935.
UNDER 1925 RULES OF PROOF THE
CROWN OVER B.P. THUS ~~BP~~
WITH OUT THE WORDS BLACK POWDER.
WOULD INDICATE NITRO PROOF

REGARDS LES