

John Sexton
1962 Portage Landing North
North Palm Beach, FL 33408

770-329-4984

John@CivilWarDealer.com

March 24, 2012

Joe Murphy

At your request; I have examined a Civil War Confederate Leech & Rigdon revolver serial number 15 for purpose of authentication determination. I have examined this item several times in past several years and my opinions and observations are noted. I have prepared a summary appraisal as follows for authenticity.

In summary, this Civil War Confederate Leech & Rigdon Revolver serial number 15 was found to be original and authentic and possibly the most desirable (being serial numbered) of only 2 known complete examples of "Novelty Works" marked pistols.

In general, the condition of the subject Civil War pistol was average for similar arms found elsewhere in marketplace, however in this case this is such a scarce object being made in the Confederate States early during the Civil War; though average for US arms of same pattern, there are few others to compare made in the South. Unless stated herein, the appraisal is based on the readily apparent identity of the object appraised.

The conclusions expressed herein are based on the appraiser's best judgment and opinion. I have photographed and examined numerous Civil War objects of many types including many Confederate revolvers and consider myself very proficient in establishing authenticity in this field.

I certify to the best of my knowledge and belief:

- a. Statements of fact contained in this report are true and correct.
- b. The reported analyses, opinions, and conclusions are limited only by the reported critical assumptions and limiting conditions, and is my personal, impartial, and unbiased professional analyses, opinions, and conclusions.
- c. I have no undisclosed past, present or contemplated future interest in the property that is the subject of this report, and no personal interest with respect to the parties involved with exception of fact that I am brokering the sale of this particular object.
- d. I have no bias with respect to the property that is the subject of this report or to the parties involved with this assignment.
- e. My engagement in this assignment was not contingent upon developing or reporting predetermined results.
- f. My compensation for this appraisal is not contingent upon the development or reporting of a predetermined value or direction in value that favors the cause of the client,

John Sexton
1962 Portage Landing North
North Palm Beach, FL 33408

770-329-4984

John@CivilWarDealer.com

the amount of the value opinion, the attainment of a stipulated result, or the occurrence of a subsequent event directly related to the intended use of this appraisal report.

g. I have personally inspected the listed property that is subject of this report.

h. Unless noted elsewhere, no one has provided any assistance to the person signing this report.

With the exception of Joseph Murphy who is my client, possession of this report or its copy does not carry with it the right of publication, nor may this report be used for any other purpose than establishing basis for authenticity. If this report is reproduced, copied or otherwise used, it must be done so in the report's entirety including this cover document and all attachments. Furthermore, no change to any item in this appraisal shall be made by anyone other than myself.

I regard all information in this appraisal as confidential. I retain a copy of document along with my original notes and photographs. I will not allow others to have access to these records without your written permission unless ordered so by a court of law.

Photographs of subject pistol and my Professional Profile can be found in the addendum to this report.

Sincerely,

John Sexton, AAA, ISA

John Sexton
1962 Portage Landing North
North Palm Beach, FL 33408

770-329-4984

John@CivilWarDealer.com

LEECH & RIGDON NOVELTY WORKS REVOLVER SR # 15

This rare Confederate revolver is one of 3 known with barrel marking "LEECH & RIGDON NOVELTY WORKS CSA". The stamping is made from two separate dies "LEECH & RIGDON" and "NOVELTY WORKS CSA". Subject gun serial # 15 and an unserialized gun also in your possession are the only two complete specimens known at this time among the Confederate collecting community. Serial number 11 also exists but is in poor condition with original parts being frame, barrel and trigger guard and not positive after these parts. The earliest Leech & Rigdons made prior to serial 52, including known guns: 11, 15, 25, 26, 39, 41, 47 and unserialized Novelty Works show similar characteristics of manufacture and finish (though different markings). These earliest guns are not "refined" in finish, showing tool marks and nonconsistent barrel lengths not seen after serial 52. Kent Wall in recent ASAC 2011 article states opinion that these earliest guns were possibly commercial production as after government contracts, guns including serial 59 through end of production have consistent "polished" metal surfaces no longer showing tool marks (lathe, file, etc). Barrels are also 7 1/2" with no real deviation. In these early eight revolvers, guns are characterized as shorter and longer barrels, varying 1/8" to 1/4" with lengths varying from 7 1/4" to 7 5/8". Other characteristics not seen on standard production are a larger serial stamping on stocks seen on subject gun, 39, 41 and 52 and not noted later. This gun has serial numbers present on barrel housing, frame, cylinder (on back adjacent to safety pin), trigger guard, back strap, loading arm, arbor and stocks. Serial numbers are not present on latch or wedge, though in earlier notes of collectors, both parts are thought to be possibly original. There is also a serial number noted on loading lever screw, this is only seen on two other Leech revolvers which are serial number 26 (though it is unmatched 36) and on 52. Numbered screws are not noted on any other Leech revolvers known to me. Subject gun is NRA Good+ condition, good edges, crisp markings, solid stocks with chipped toes being better than average for Confederate handguns but probably the most desirable of the 2 known complete "Novelty Works" Columbus, Mississippi made pistols. The accompanying ASAC articles by Ted Meredith and Kent Wall detail rarity and configurations.

PROVENANCE and HISTORY: This gun according to notes taken from original correspondence between William Albaugh and Lawrence "Butch" Austin of 1808 Springfield Road, Bloomington, IL 61701 in mid 1950's starting in 1955 states gun was bought for \$3.00 in Miami November, 1953 by Mr. Austin. Mr. Austin died about 1991 and "conveyed" gun to his friend Gene Howard. Howard sold gun through Bruce Kusrow of northern Virginia who continued correspondence with Mr. Austin after Albaugh's death. Kusrow arranged for collector Burney Crooke of Pensacola, FL to purchase gun for \$26,000 in March, 1999 when Mr. Howard decided to retire to Florida and needed funds to help in that transition. When Mr. Crooke had health issues in about 2004 and sold his guns, Gene Mathis of Memphis, Tennessee purchased this gun in a package of

John Sexton
1962 Portage Landing North
North Palm Beach, FL 33408

770-329-4984

John@CivilWarDealer.com

Leech products and owned it till this date where I have brokered the sale for about the same price you are paying Mr. Mathis today.

LITERATURE: described and listed in William Albaugh's *Confederate Handguns*, page 52, Albaugh corresponded with owner Lawrence Austin in 1955 but no photographs were taken until Bruce Kusrow paid Mr. Austin to have professional photographs taken about 1977. The gun is mentioned in Bill Gary's 1987 book *Confederate Revolvers* on page 15 and pictured in Ted Meredith's article, *Variations of the Leech & Rigdon Revolver* in 1995 American Society of Arms Collector's bulletin # 72. Subject gun is also mentioned and described in most recent ASAC bulletin # 103 in article by Kent Wall, *Leech and Rigdon Revisited*.

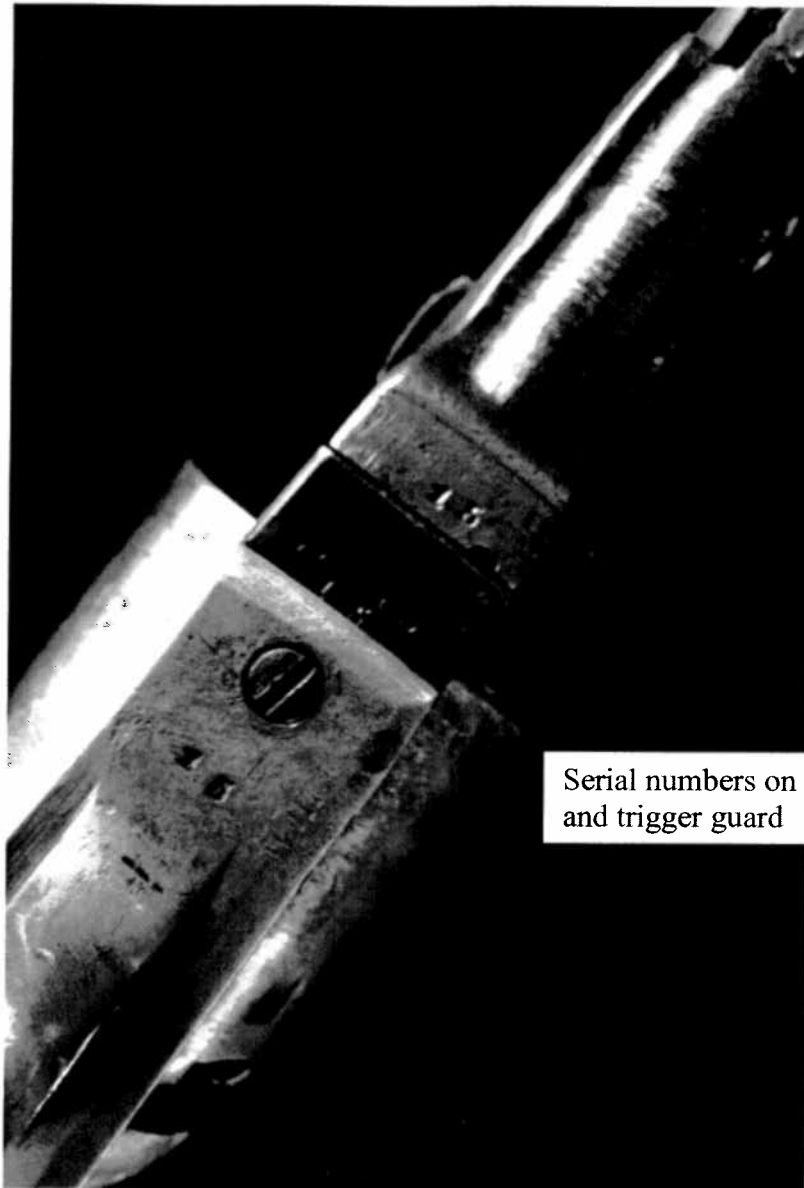


Barrel markings on subject gun, note the partially filled dies in "Novelty" found on all 3 known examples

John Sexton
1962 Portage Landing North
North Palm Beach, FL 33408

770-329-4984

John@CivilWarDealer.com

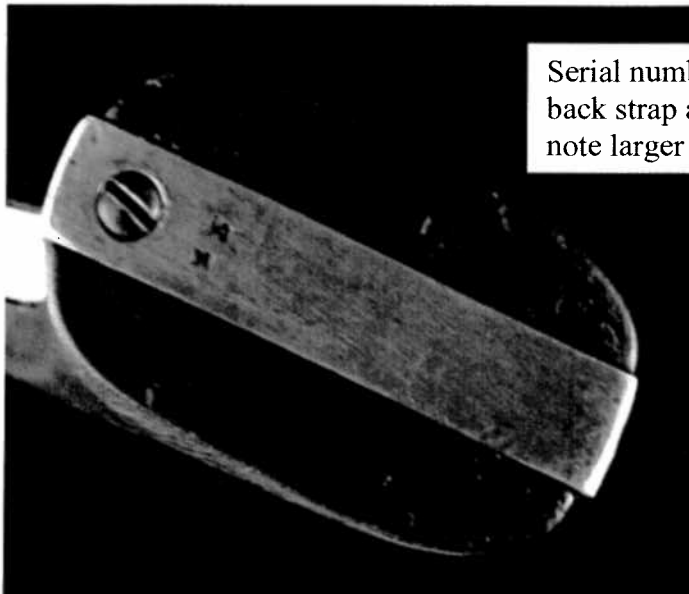


Serial numbers on barrel frame
and trigger guard

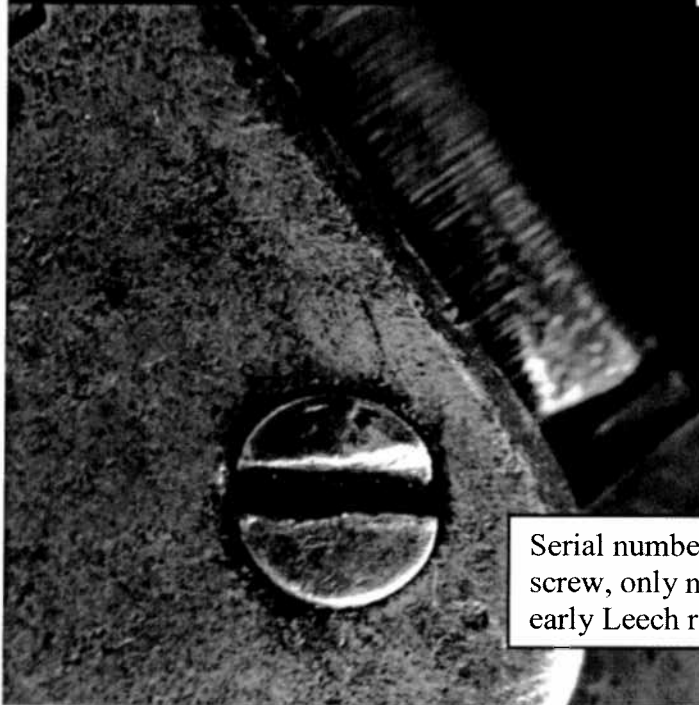
John Sexton
1962 Portage Landing North
North Palm Beach, FL 33408

770-329-4984

John@CivilWarDealer.com



Serial numbers on bottom of
back strap and butt of left stock,
note larger die number in stock



Serial number on loading lever
screw, only noted on one other
early Leech revolver

Variations of the Leech & Rigdon Revolver

Edward J. Meredith

Charles H. Rigdon, one of the Confederacy's great mechanical entrepreneurs, stepped onto the American stage as a scale maker in the city of Cincinnati, Ohio. In 1844 he transferred his "weighty" business to St. Louis, Missouri, later becoming a part-time engineer on a steam engine project. Soon after this venture he moved the balance of his business to bustling Memphis, Tennessee. There Rigdon's ability as a scale maker, requiring intricate skills in precision instruments, led to a more patriotic calling of revolver manufacturing as the clouds of war shadowed the American unity.

Enter Thomas Leech who had been in Memphis working as a cotton broker several years prior to Rigdon's arrival. The Civil War threats adjusted his thinking, and he turned his attention to the manufacture of war materials. By late 1861, Leech's company, the Memphis Novelty Works, was fashioning swords, sabers, Bowie knives, bayonets, spurs, and other accouterments for the glorious Southern Cause.

In the Spring of 1862, the Memphis Novelty Works was advertised as under the joint control of Thomas Leech and Charles Rigdon, marking the humble beginning of the Leech & Rigdon Company.

War threats to the city of Memphis in May of 1862 caused the neophyte company to pack up machinery and baggage and move to safer quarters in Columbus, Mississippi.

It is generally assumed that the first Leech & Rigdon revolvers were manufactured in Columbus, Mississippi, as there is no solid evidence that any revolvers evolved from the Memphis facilities. A short-lived stay in Columbus saw the transition of the firm name from the **Memphis Novelty Works** to the **Novelty Works, Leech & Rigdon Company**, as marked on some of their swords and revolvers. The War dictated that revolvers were more in demand than swords, and a contract with the Confederate Government for approximately 1500 Colt-type revolvers, with six cylinder stops, was expected by November, 1862. However, the contract itself never surfaced, even though it apparently had been fully promulgated.

Before the Leech & Rigdon Company could gain momentum in Columbus, the relentless Federal invasion pushing southward necessitated another major machinery move to a safer haven, Greensboro, Georgia. There the company purchased the building formerly used by the Greensboro Steam Factory and re-assembled their thus-far very mobile opera-



tion. In April, 1863, the company discontinued its sword-making operation entirely and their sole endeavor now consisted of the manufacture of percussion revolvers. However, their apparent success was to prove short lived.

For unknown reasons the partnership of Charles Rigdon and Thomas Leech failed, and on December 13, 1863, the Leech & Rigdon Company was dissolved. In its brief history, the firm did produce some 900 revolvers of the originally contracted 1500, while located on three separate factory sites. Undaunted by this setback, Charles Rigdon formed another partnership with Jesse Ansley, Andrew Smith, and Charles Keen, renamed the firm Rigdon, Ansley and Company, and relocated it to Augusta, Georgia. The balance of the old Leech & Rigdon contract for the Colt-type revolvers was faithfully completed by the new firm before changing to production of a twelve cylinder stop model, later to be known as the Rigdon, Ansley revolver.

All of the Leech & Rigdon revolvers produced were patterned after the then immensely popular .36 caliber Colt 1851 Navy Model. The revolvers all had iron frames, brass backstraps, and small, rounded brass trigger guards, but a more easily machined round barrel was substituted for the octagonal barrel of the Colt. Leech & Rigdon felt that "their revolver was fully equal to a Colt with the exception of a little outside show."¹ Surviving examples today, when compared to a number of the other Confederate-made revolvers, prove this statement to be accurate.

1. Gary, William A., *Confederate Revolvers*, page 14.

Because of the many changes in the company's name and location, there are a number of variations in the markings found on surviving examples of the Leech & Rigdon revolvers. In order to present a coherent pattern of these revolvers and their markings, I will break down the serial numbers into ranges that conform to the different firm stampings.

In the range of serial numbers 1 to approximately 24, the revolvers are marked on the top barrel flat: **LEECH & RIGDON NOVELTY WORKS, CSA**. The known surviving examples are serial numbers 11, 15, and an un-numbered specimen in the author's collection. The firm stamp letters are approximately 1 mm in height with the small serial numbers 1½ mm in height and individually stamped. The same serial number dies appear to have been used throughout the entire Leech & Rigdon production. A larger stamping of the serial number (measuring 2½ mm) appears on the wood of the right grip butt of the early revolvers. The numbered parts include the trigger, hammer, cylinder, barrel, loading lever, plunger, loading lever barrel catch (ball type), backstrap, trigger guard, and the loading lever screw face. The numbering on the screw face is seen as far as serial number 60.

On the earlier revolvers we see examples of both the longer and shorter barrel lengths, which ranged from 7¼ inches to 7⅝ inches. Safety pins on the back of the cylinder and the slotted hammer face carry through into the serial number 900 range. The absence of the cap release channel in the recoil shield is common throughout the entire production of the firm's revolvers.

Overall, the quality of the earlier manufacturing is more coarse, or rougher, especially in the brass castings, than what was seen in the later revolver production. The iron used in the barrel, frame, and cylinder contains numerous casting flaws, but no twist lines are noted as usually seen in other Confederate revolvers such as the Spiller & Burr and the Griswold & Gunnison.

After serial numbers 25 and 26, both of which are marked **LEECH & RIGDON** on the barrel housing flat in the 1 mm size die, we need to consider the range of serial numbers 27 through, at least, 52. All known survivors in this range have an unmarked barrel housing flat. The larger size serial numbers stamped into the wooden grip butt continue to be found up to serial number 52. The coarse metal qualities are still noted, while the ball type loading lever is carried through into the serial number 300 range.

"Some of the first revolvers made by Leech & Rigdon were sent to Rigdon's old friends of the First Missouri (Confederate) Infantry, comprised almost entirely of St. Louis

boys."² In the author's collection is serial number 52 which was forcibly obtained from a young, unknown Confederate officer at Fort Smith, Arkansas, by Major Mayberry Lacy of the 69th Indiana Volunteers. Also in that haul was a fine Confederate Staff and Field Officer's Leech & Rigdon sword belonging to the same unfortunate Confederate. A portion of the First Missouri Infantry had been stationed at Fort Smith during the mid-1862 period.

The third breakdown is from serial numbers 53 to approximately 347 and features the small firm stamping, **LEECH & RIGDON**. It is the identical Leech & Rigdon stamp as that portion used in the earlier Novelty Works marked revolvers. To this point there has been a lack of any other markings other than the serial numbers and firm stampings. An exception is found on serial number 121 which has the letter **N** stamped on the trigger guard. This **N** in block type is a cryptic mark believed to be, along with the following letters and pattern, an internal company inspector's mark. Other cryptic marks that appear on later serial numbered revolvers are **J**, **D**, **W**, a stylized **N**, and an arrangement of four elongated dots in the form of a cross. All of these marks are located on various parts of the brass trigger guards and have yet to be seen stamped on the iron or steel portions of the revolver. Some revolvers, such as serial number 1109, have two different cryptic marks, a block **N** and the dotted cross.

In this particular serial number range (53 to 347) the direction of the firm stamping is sometimes reversed down the barrel to the muzzle instead of towards the breech. In this grouping we also see a transition from the ball type latch to the pin and ball loading lever latch. Interestingly enough there is an extreme lack of current collector knowledge of the revolvers between serial numbers 121 and 346. No records of any revolvers in the serial number 200 range have been recorded, and only three examples in the serial number 300 range have been documented.

A large firm die, **LEECH & RIGDON**, ushered in the next range from approximately serial numbers 399 to 457. Known survivors are serial numbers 422, 439, 450, and 457. These are all marked with the cryptic stylized **N** stamped in the trigger guard area, and the firm die letters measure just under 2 mm in height. The direction of the firm stamping has been stabilized by this stage, reading from the muzzle end to the breech end. Both this stamping direction and the pin and ball loading lever latch continue throughout the remainder of the production of the firm's revolvers.

In the range of serial numbers 346 to 597, besides the firm stamping, only the stylized **N** cryptic mark is noted. In this time, the quality of the revolver is generally improved.

2. Fuller and Stuart, *Firearms of the Confederacy*, page 269.

especially in the brass sand castings of the backstrap and trigger guard. The frame, hammer, and loading lever are case hardened, while the barrel and cylinder have a thin blue finish. The author has not detected any traces of silver plating on the brass, a practice seen on some of the Union made revolvers of this period.

Finally, the large firm die most familiar to arms collectors, **LEECH & RIGDON CSA**, enters the production line, appearing soon after serial number 457 and continuing through serial number 1489. This stamping appears to be the same size die as the earlier **LEECH & RIGDON** but with the added **CSA**.

In the range of serial numbers 1006 to 1300, a **S.C.** or **S.Ca** stamp appears on the right grip butt. The question arises, "was this a South Carolina subcontract or were the revolvers to be issued to South Carolina troops?" Unfortunately, to date, no answers have been forthcoming.

A Confederate arms inspector's cartouche, **W.H.** (for Captain Wescom Hudgins, **CSA**) enclosed in a small diamond on the right grip butt has been noted on four revolvers from serial numbers 1262 to 1416.

Taking a page out of Colt's book, Rigdon attempted to utilize leftover parts, such as slotted hammers and cylinders with safety pins, but not necessarily in tandem. In the serial number 900 range to the end of the run, the slotted hammer face and safety pins disappeared. Safety, like the glorious Southern cause, appears to have been cast to the winds. This period represented the transition of Leech & Rigdon to Rigdon, Ansley production with the firm's move to Augusta, Georgia, where Charles Rigdon pulled all his loose ends and parts together in order to improve the company's cost effectiveness.

The end of Rigdon's changing address saga was found in revolver serial number 1490, the true transitional piece from Leech & Rigdon to Rigdon, Ansley. The firm stamping appears on the three top sides of the barrel housing: **ADDRESS/C. H. RIGDON/AUGUSTA, GA**. The size of the discernible **AUGUSTA** and **GA** carries through into the **AUGUSTA, GA** marked revolvers of Rigdon, Ansley. The pin and ball latch is still present on serial number 1490, but the cylinder now has twelve stops as seen in the later Rigdon, Ansley revolvers. The cryptic mark **W** appears for the first time in the production sequence.

Rigdon's old partner, Thomas Leech, passed into oblivion after the War and died in 1885. On October 9, 1866, Charles Rigdon died of inflammation of the bowels, or more probably, acute ulcerative colitis. Apparently the stresses and strains of the War, assembling, tearing down of machinery, packing, unpacking, and re-assembling, along with the ex-

treme disappointment of a losing cause, were too much for this patriotic mechanical genius of the South.

Rather than close with a *post mortem* report of the frustrating life of Charles Rigdon, I would like to conclude with a word of encouragement to the many handgun seekers who have fallen victim to the strains of "Dixie."

Because of their many variations, the Leech & Rigdon revolvers present an exciting but sometimes exasperating challenge to the already befuddled and confused collectors of these beautiful Southern six shooters. As far as craftsmanship and technical skills are concerned, the revolvers produced by Charles Rigdon and his partners rank among the finest handguns turned out by the embattled Confederacy.

The serial number records used in this report contain details, not hearsay, on 121 Leech & Rigdon revolvers, representing a survival record of over 8%. Each year I am once again amazed to see or hear of another lost survivor coming out of the woods, so keep your eyes peeled. The more data we can add, the more complete the picture. These handguns are worth the time and the vigilance!

I would like to take this opportunity to thank my mentor and longtime friend, Bruce Kusrow. Bruce, under the guidance and influence of the late Bill Albaugh, has spread the love of Confederate handguns to me over the last twenty years. With his unerring memory, meticulous records, and photographic history, he has helped, along with his wife, Annamarie, to make this report possible.

BIBLIOGRAPHY

Albaugh, William A., III, and Simmons, Edward N., *Confederate Arms*, Stackpole Co., Harrisburg, Pennsylvania, 1957.

Albaugh, William A., III, *The Original Confederate Colt*, Greenberg Publisher, New York, 1953.

Albaugh, William A., III, Benet, Hugh, Jr., and Simmons, Edward N., *Confederate Handguns*, George Shumway, York, Pennsylvania, 1963.

Anderson, Cecil W., "The Enterprising Mr. Thomas Leech," *North South Trader*, Vol. XII, No. 5, July-August 1983.

Craigh Boddington, Editor, *America, The Men and Their Guns That Made Her Great*, Peterson Publishing Co., 1981.

Edwards, William B., *Civil War Guns*, Stackpole Co., Harrisburg, Pennsylvania, 1962.

Fuller, Claud E., and Steuart, Richard D., *Firearms of the Confederacy*, Standard Publications, Inc., Huntington, West Virginia, 1944.

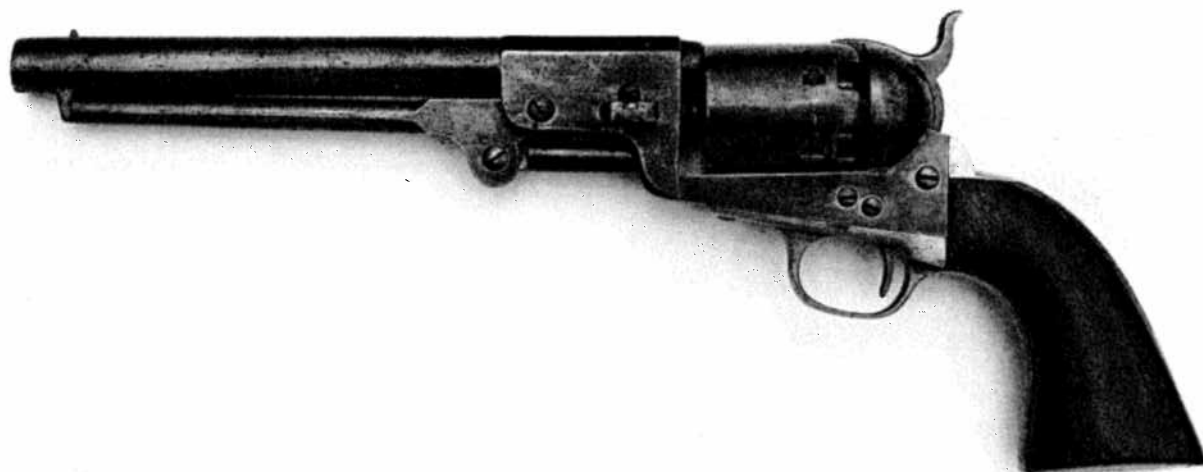
(continued)

Gary, William A., *Confederate Revolvers*, K8 Communications, 1987.

Hartzler, Daniel D., *Confederate Presented Swords & Revolvers*, Old Soldier Books, Inc., Gaithersburg, Maryland, 1988.

★ ★ ★ ★ ★ ★ ★ ★

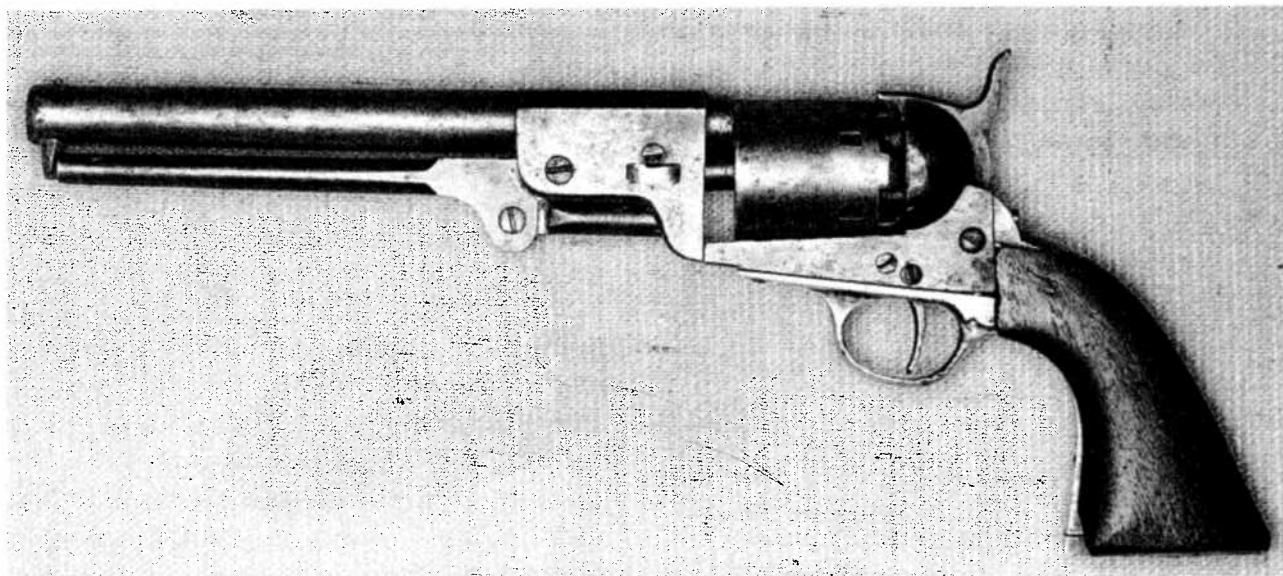
Leech & Rigdon Revolvers and Some of Their Characteristics



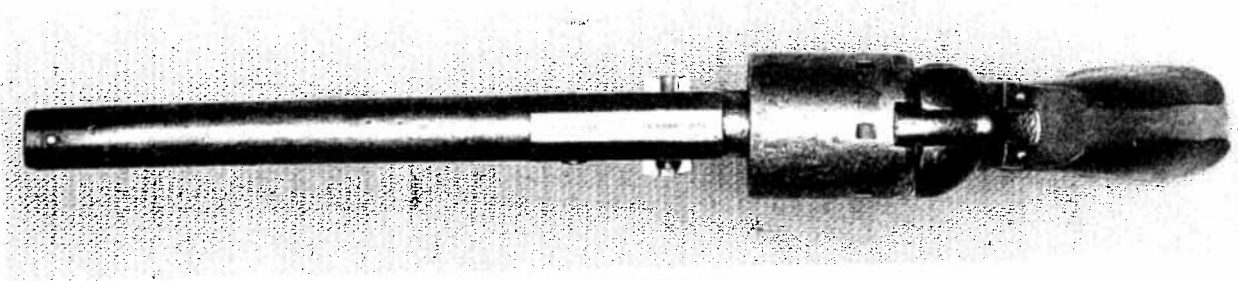
An unserialized early Leech & Rigdon revolver with the markings: LEECH & RIGDON NOVELTY WORKS CSA. This revolver has the longer barrel. Author's collection.



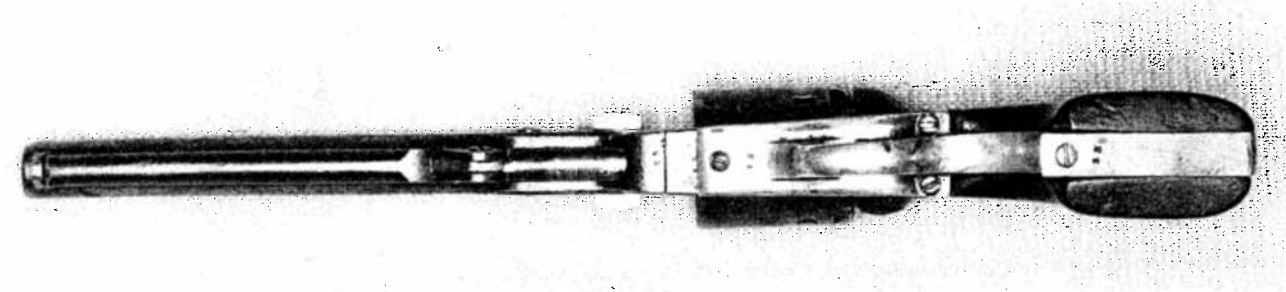
Closeup of the barrel markings on the unserialized Leech & Rigdon revolver.



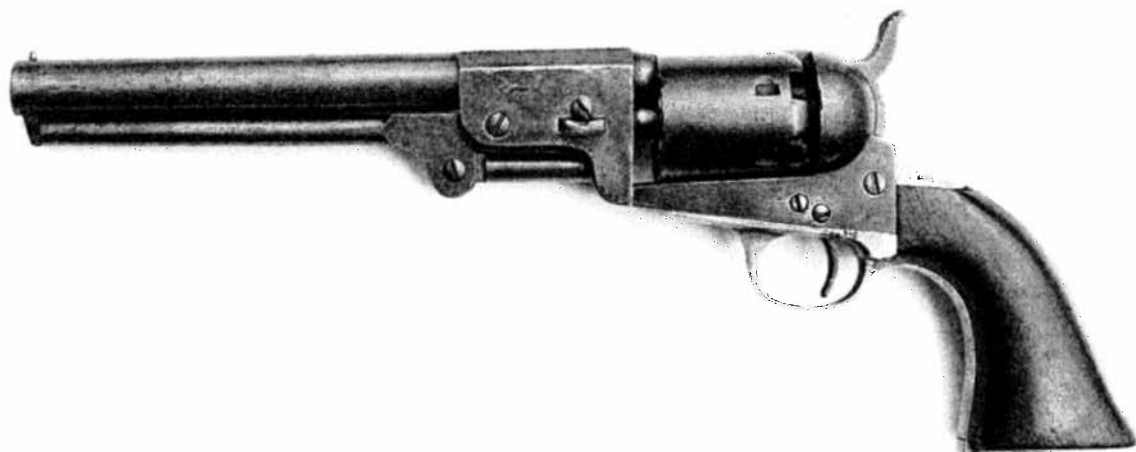
Early Leech & Rigdon revolver serial number 15. Note the shorter barrel. Current owner unknown.



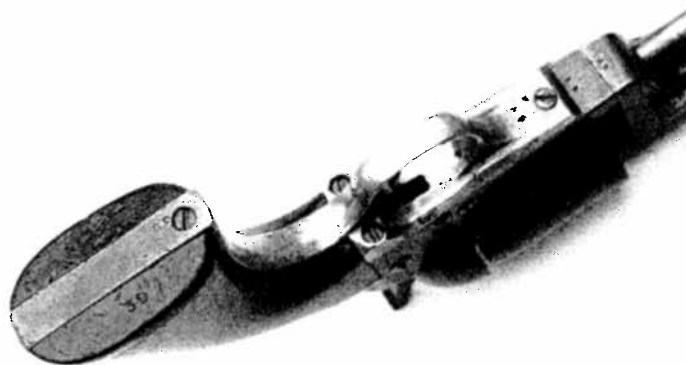
Top barrel flat of Leech & Rigdon number 15 showing the firm markings: LEECH & RIGDON NOVELTY WORKS CSA.



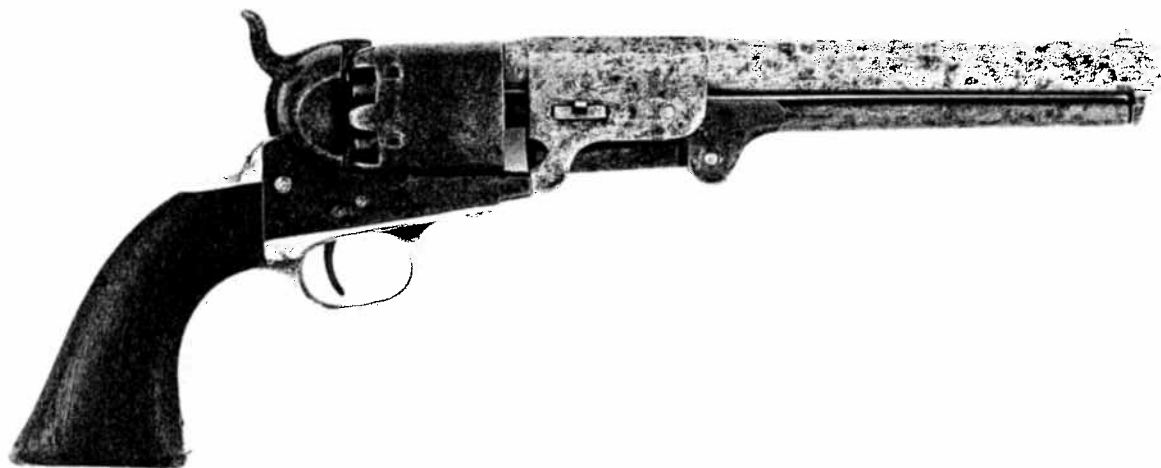
Underside of Leech & Rigdon number 15 showing the larger sized serial number "15" stamped in the upper grip butt.



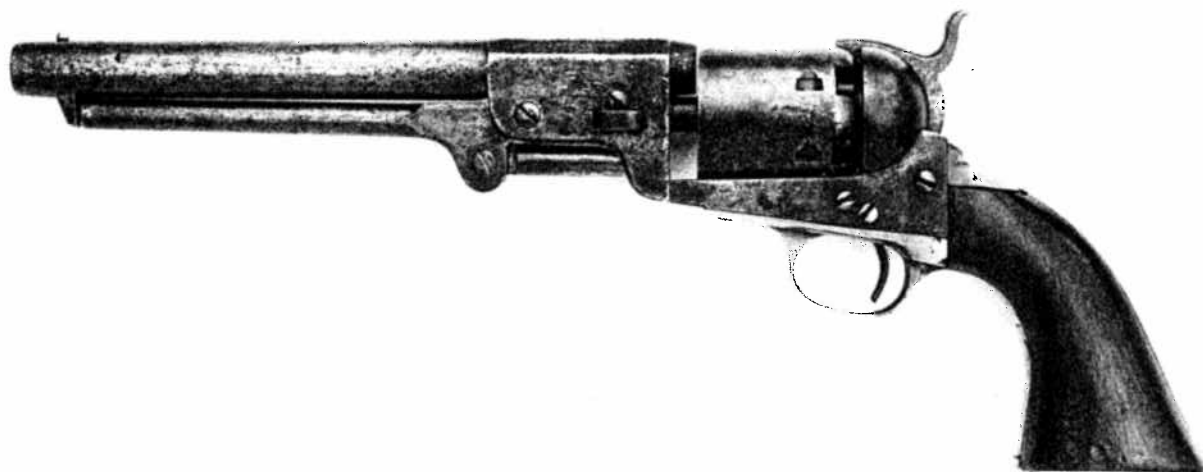
Leech & Rigdon revolver serial number 39. No company markings are present on the barrel top. Note the shorter type barrel as well as the casting flaws in the trigger guard area. Author's collection.



Leech & Rigdon number 39. Note the larger sized stamping of the serial number in the wooden grip butt.



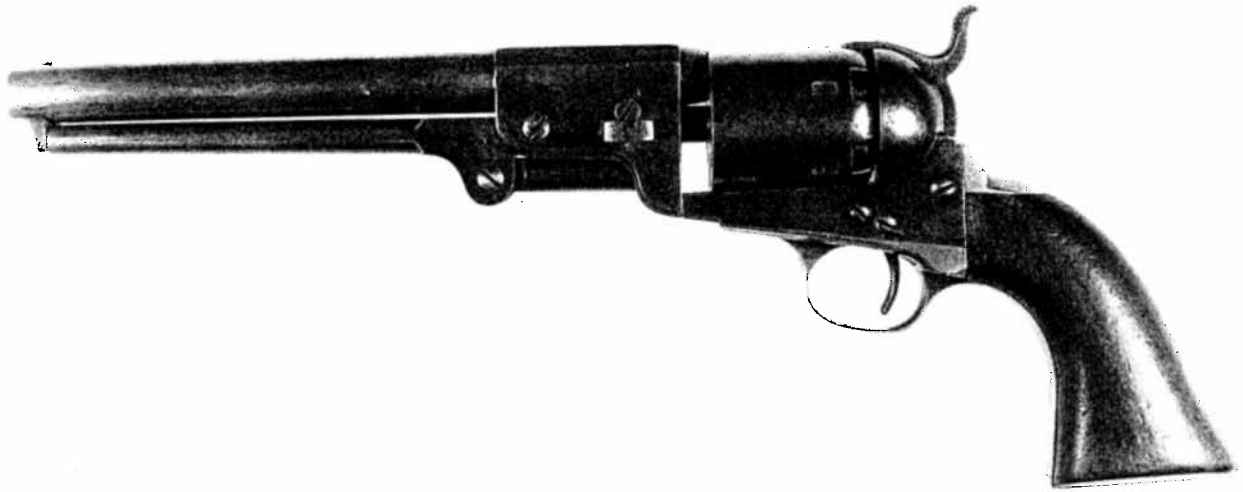
Leech & Rigdon revolver serial number 41. No company marking is present on the barrel top. Note the ball (no pin) type loading lever latch. Formerly in the author's collection.



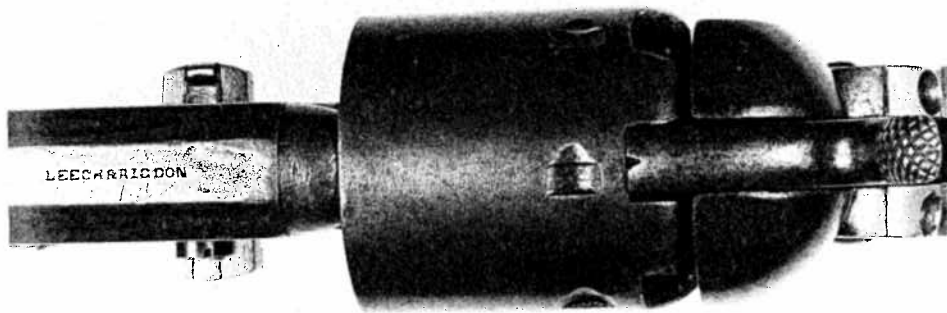
Leech & Rigdon revolver serial number 52. Note the longer barrel type, and that the brass portions have pitting-like casting flaws. No company markings are present on the barrel top flat. Author's collection.



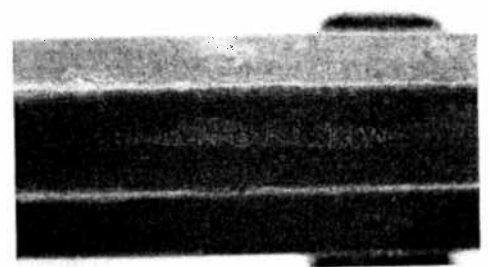
Leech & Rigdon revolver number 59. The company name stamping is the small sized die. The loading lever screw is serialized.



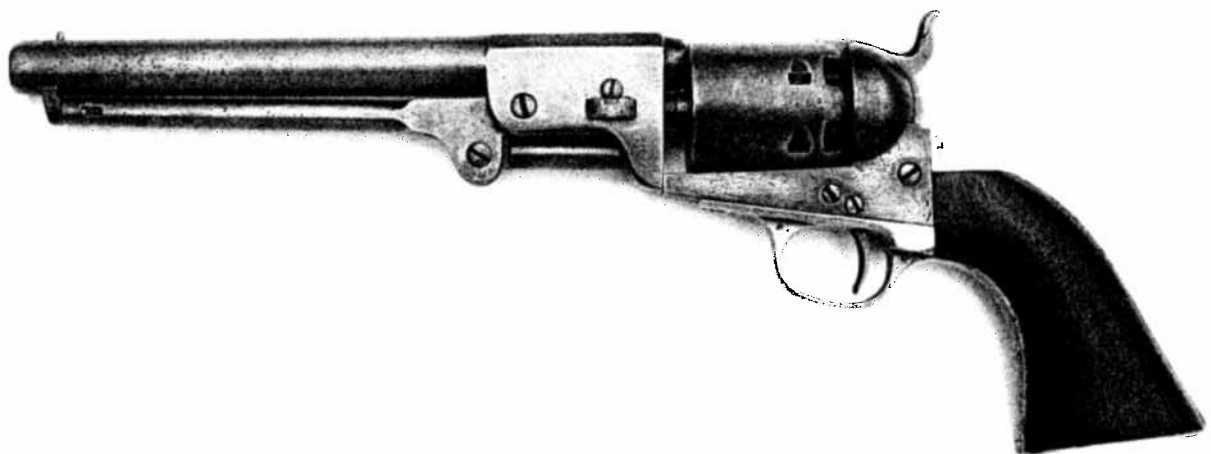
Leech & Rigdon revolver serial number 60. Company name markings are LEECH & RIGDON by the small sized die, and the loading lever screw is serialized. Courtesy of Dr. Robert L. Moore, Jr.



Top view of Leech & Rigdon number 60. Courtesy of Dr. Robert L. Moore, Jr.



Top view of serial number 450 showing the LEECH & RIGDON company markings.



Leech & Rigdon revolver serial number 450. Company markings on the barrel top flat are LEECH & RIGDON with the large die stamping. Author's collection.



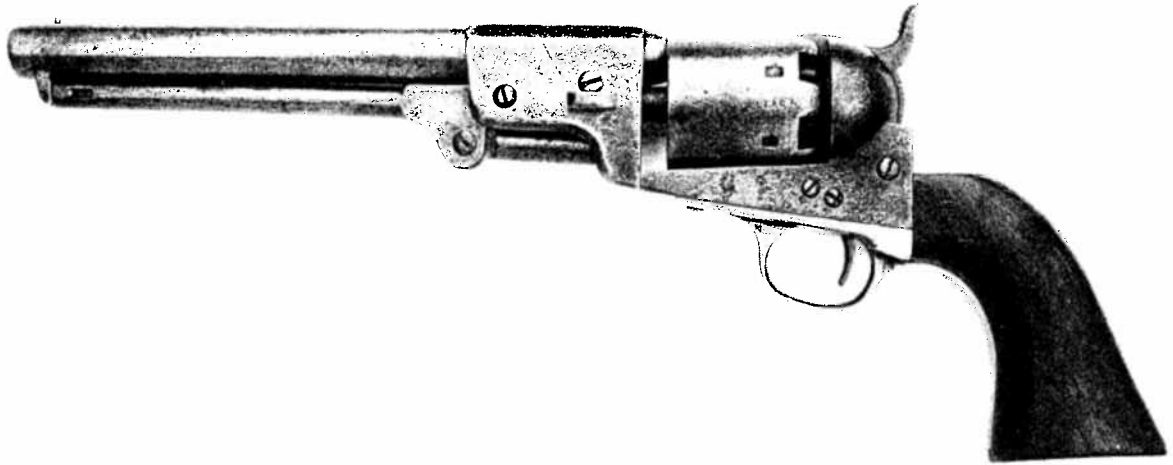
Leech & Rigdon revolver number 597 marked LEECH & RIGDON CSA on the barrel top flat, and a closeup view of the stylized cryptic letter "N" on the trigger guard. Author's collection.



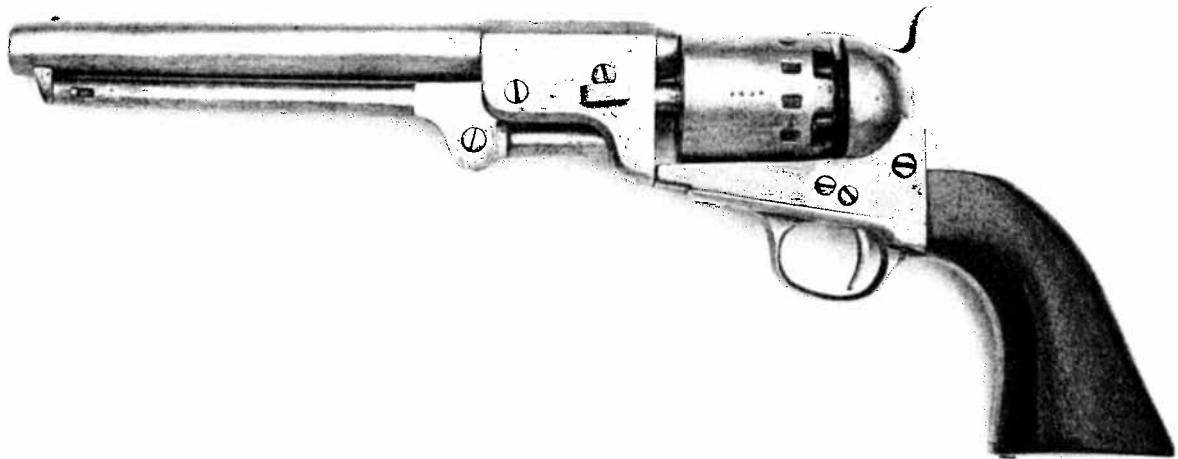
A fine Leech & Rigdon revolver serial number 861. Note the four dot cryptic mark on the trigger guard. Author's collection.



Leech & Rigdon revolver serial number 1070 with the firm marking LEECH & RIGDON CSA stamped on the barrel top flat. Formerly in the collection of Bruce Kusrow.



Leech & Rigdon revolver serial number 1109 with "S.C." stamped in the wooden grip butt. Author's collection.



Transitional model revolver serial number 1490 with the addition of the 12 cylinder stop safety feature instead of the six of the preceding revolvers. The revolver is marked: ADDRESS/C. H. RIGDON/AUGUSTA GA on the three top flats of the barrel. Author's collection.



Reverse view of the transitional model number 1490.

Leech and Rigdon Revisited

By Kent Wall

On February 22, 1862, at Camp Lee near Savannah, Georgia, Pvt. William Henry Hood of the Georgia Infantry wrote a letter to his parents, Mr. and Mrs. R. P. Hood, who lived near Cartersville, Georgia:

Dear Father and Mother,

I take the pleasure this morning of dropping (sic) you a few lines to let you know I am still numbered among the living and in the enjoyment of good health with the exception of a very bad cold. We have been laboring very hard for the last two weeks throwing up breastworks around Savannah on every road leading into the city that the Yankees can come in at by land. We have to walk seven or eight miles to work every morning and night. It's hard but right.

We have got our battle ground cleared off three miles below Savannah on the Shell Road from the beach to Thunder Ball. We have cut close every tree and bush off (sic) about five or six hundred acres of land and got log pens built for one mile and a half on each side of the road.

It is reported that Governor (sic) Brown is going to let us go home when our time is out but I don't believe it actual I am coming home when my time is out. I volunteered (sic) for six months and I am perfectly willing to serve my time out and then I want to come home and stay awhile and go again but I don't want to be forced into it. I want to go with a free good will.

Your affectionate (sic)

Son till Death,

W. H. Hood

William H. Hood (Figure 1) got his wish and on May 3, 1862, at Camp Harrison, "near Cartersville," he re-enlisted for "three years or the war" in Captain Leak's Company (shown in the roster records variously as Company G and D), 1st Georgia Cavalry Regiment. Thus, Mr. Hood, having served honorably for six months in the infantry, came home, stayed awhile, and went again, this time as a cavalryman. He served with this regiment until the end of the war, rising to the rank of sergeant, was wounded during the Chickamauga Campaign, and participated in all the major campaigns and many raids of the western armies until paroled in Charlotte, North Carolina on May 3, 1865, in "accordance with the terms of a Military Convention entered into on the 26th day of April, 1865, between General Joseph E. Johnston, Commanding Confederate Army and Major General



W. T. Sherman, Commanding United States Army in North Carolina".² At some point along the way in 1864, Sergeant Hood came into possession of a .36 caliber, Navy model, iron frame, 6 shot revolver, serial number 1282 (Figure 2). The barrel flat is stamped 'LEECH & RIGDON CSA', and 'S. C.' is stamped on the bottom of the wood grip. Sergeant Hood personalized his ownership of this gun by scratching his initials 'WHH' on the brass butt strap and carving 'WHH' and '1864' on the left side of the grip.³ It is doubtful that Sergeant Hood knew much, if anything, about Leech and



Figure 1. Sergeant William Henry Hood, 1st Georgia Cavalry, 1862-1865, on the horse he rode during War.

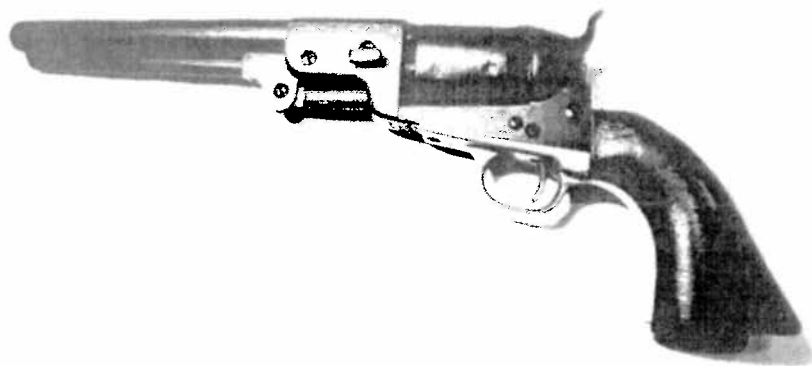


Figure 2. Leech and Rigdon revolver #1282 identified to Sergeant Hood with "LEECH & RIGDON CSA" barrel stamping

Rigdon, where his revolver was manufactured, or even cared about such things. After all, his primary purpose was to fight the Yankees and his main interest in the gun was whether or not it would function when the time came. Today's Confederate gun collectors, however, do have an interest in the when and where concerning Leech and Rigdon and much, much more.

The story of the wartime adventures of Leech and Rigdon as they struggled against nearly insurmountable odds to supply arms to the Confederacy has been previously documented. New information has recently been uncovered which makes a re-examination necessary.

During the great war for Southern independence, 1861-1865, many private enterprises sprang up throughout the Confederacy, all engaged in various tasks to support the military effort. These activities ran the gamut from the production of accoutrements to the fabrication of swords, pikes, side knives and firearms. While much in the way of war material came through the blockade primarily from Europe, or was produced in the various government controlled armories and arsenals, revolver development and production initially began with private involvement and to a great degree remained that way throughout the conflict.

Two of the well known private firms producing revolvers were Griswold & Gunnison and Leech & Rigdon, later known as Rigdon, Ansley and Co., names which are well known to many in the Civil War fraternity and others who enjoy history and arms collecting. Compared to their northern counterparts, the total production of these two firms was paltry, but none-the-less, the effort was valiant and the surviving specimens continue to provide collectors with a small trove of wonderfully enticing examples and an endless number of unanswered questions and unresolved theories. While a great deal is known about those firms, much still remains a mystery to this day, especially the enterprise of Leech & Rigdon.

Griswold & Gunnison, located in Griswoldville, Georgia, developed and produced the largest number of

round barrel, 6 shot, .36 caliber, brass frame model revolvers. Based on the highest known serial number, total completed gun production was around 3,600.⁴

The second ranked producer of completed revolvers operated initially in Memphis, Tennessee, under the name of Thomas Leech and Company before relocating to Columbus, Mississippi, in the spring of 1862, where a new partnership named Leech and Rigdon was formed and revolvers were advertised for the first time. After eight months, the firm relocated to Greensboro, Georgia, where revolver production was restarted and continued until late 1863, when the partnership was dissolved. In early

1864, operating under a new copartnership with the name of Rigdon, Ansley and Company, revolver production was moved to Augusta, Georgia, where it continued until near the end of the war. Total production of the various enterprises and partnerships of a round barrel, .36 caliber, 6 shot, iron frame revolver was just under 2,400 based on records of the surviving serial numbered guns.⁵

The purpose of this article is to provide an overview of the generally accepted version of the wartime activities of the various partnerships, and an examination of recently found material and its impact on some older ideas and theories that either support or refute accepted facts. In other words, in light of the new material, it's time to revisit what we think we know.

In this undertaking, I have been assisted immeasurably by a number of dedicated and diligent predecessors, who, over the years, were able to open the window on the activities of the various partnerships as well as their accomplishments. Among these earlier stalwarts are Bill Albaugh, Ed Simmons, Fred Edmunds, Ted Meredith, Bill Gary and Bruce Kusrow. Ted Meredith's May 1995 article in the *ASAC Bulletin* provided an excellent synopsis of the various revolver markings and transitional details of the Leech and Rigdon/Rigdon and Ansley guns. Since then, nothing further has been published.

As with many things historical, little by little, more information comes to light, which may roll back the curtain of mystery and fill another gap. Or the new material may be judged to be of no use and the quest continues. With this in mind, I commissioned a re-examination of all related documents and correspondence in the National Archives and Records, Washington, DC, to determine whether or not any information on Leech and Rigdon/Rigdon and Ansley had been overlooked by earlier writers and researchers. That effort proved to be fruitful. Further, I was privileged to be granted access to the largest compilation of serial numbers.

related barrel stampings and die sizes for most known Leech and Rigdon/Rigdon and Ansley revolvers. To say the least, this presented a wealth of material.

The story begins in pre-war Memphis, Tennessee, a thriving town on the Mississippi River. In 1854, Thomas Leech, an Englishman by birth, moved there and shortly after opened a cotton brokerage business at 35 Front Row Street, financed by himself and four partners, all from Liverpool, England. Presumably, the cotton brokerage business flourished and as war clouds began to darken the horizon, Leech seized the opportunity and opened the Memphis Novelty Works for the sale of military equipment in August 1861. In effect, Thomas Leech had become a military outfitter.⁶ On August 29, 1861, the following advertisement appeared in the *Memphis Daily Appeal*, under the name of "Thomas Leech and Company":

Wanted 10,000 lbs. of old zinc, copper and brass immediately for military purposes. Send it in from the country, we will pay a full price.

35 Front Row Street.⁷

On September 18, another much more descriptive advertisement appeared in the same paper:

Manufacturers of Army cutlery and brass castings of all kinds. We are prepared to receive and fill orders for the following, viz: Infantry swords, cavalry swords and sabers, cutlasses and knives. Bowle knives of every description. Bayonets for shotguns and rifles. Artillery ames, stirrups and spurs of the latest and most approved patterns. Bullet moulds of all kinds, Brass mountings for Gunsmiths, Brass mountings for Saddlery. Special attention paid to the repairs of printing presses, light machinery and machine blacksmithing generally. We have engaged the services of competent workmen and will warrant our work to give complete satisfaction. All orders will meet with prompt attention. We will pay a high price for all the old copper and brass you can send us. Memphis Novelty Works/Thomas Leech and Co.⁸

Throughout the fall of 1861, while he continued to apply his considerable energy to the outfitting of Confederate military personnel through private sales via the Memphis Novelty Works, Thomas Leech was also selling swords to the C. S. Government. The records of the Military Store Keeper (MSK) in Memphis, Captain John E. Logwood, show receipts in November and December from Thomas Leech and Company of 404 cavalry swords and 800 artillery swords, 300 of which are noted "with belts".⁹ Within the Confederate procurement system, the MSK was the official receiving officer for materials produced under contract with the government.

Interestingly, there is no surviving record of any such contract between Thomas Leech and the government during this time period. This circumstance was about to change.

Enter upon the stage, the second principal player in the drama unfolding—Charles H. Rigdon. Frank Graves in his excellent article in the Jan/Feb 2010 issue of *The Report* writes that Charles Rigdon was a resident of St. Louis, Missouri in 1854, when Abel Shawk, of Cincinnati, Ohio, sold one of his horse-drawn, steam-powered fire engines to the city of St. Louis and journeyed there to demonstrate it. Rigdon was a scale maker by trade and also the engineer for the new fire engine. It is likely that through this association the two men became acquainted.¹⁰ Shawk began production of Navy style revolvers in Carondolet, Missouri in 1858, and Frank Graves speculated that perhaps some of the revolvers and machinery used in the production of the Shawk and McLanahan revolvers might have been supplied by Rigdon. While entirely plausible, no corroborating evidence has come to light.

In July 1861, by a court order, the enterprise of Shawk and McLanahan was terminated.¹² Prior to this dissolution, Charles Rigdon moved to Memphis and was listed in the 1860 city directory as a scale maker.¹³

To this day, there are several schools of thought among historians and collectors and many unanswered questions concerning Rigdon's activities from the time he left St. Louis to the development of a business relationship with Thomas Leech—a period of about two years. Did Rigdon bring him to Memphis some, or all of the Shawk and McLanahan machinery, or did this equipment actually belong to Leech? Did Rigdon assist Leech with his efforts to produce swords and other military equipment? Did Rigdon know anything about developing revolver making machinery and/or producing finished revolvers? When and how did Leech and Rigdon meet and for what purpose? What led the two into a partnership? The record remains frustratingly silent on these questions.

What is known about this period is that in January 1862, Thomas Leech secured a contract with the government to manufacture 5,000 cavalry swords and bayonets at the rate of 200 per week for the price of \$20. This contract was given to Thomas Leech and Company and secured by a promissory note guaranteed by the government on behalf of Thomas Leech and two partners, both of whom were in Memphis, neither of whom was Charles Rigdon.¹⁴ This is the first surviving contract for military equipment between Leech and the government.

About this same time, Major William R. Anderson of the Confederate Nitro and Mining Bureau, acting under orders from General P. G. T. Beauregard, met with the Board of Ordnance in the City of Columbus, Mississippi, on February 25, and pro-

that a vast complex composed of an armory, foundry and machine shops be built on three squares of land south of Main Street adjoining the Baltimore and Ohio Railroad. On February 26, the Board purchased the land and shortly thereafter, was reimbursed by the Confederate Treasury.¹⁵ Work began almost immediately on what would be called the Briarfield Arsenal. On March 13, also in Columbus, two adjacent squares of residential land, belonging to Thomas B. Bailey and located between Frances Street and the railroad, across from the land that would be the site of the new Briarfield Arsenal, were sold to Thomas Leech and Charles Rigdon.¹⁶ From these records, it would seem that sometime between the early January sword contract (with Thomas Leech and Company) and the Columbus land purchase in mid-March, Leech and Rigdon became partners, the exact nature of which remains a mystery since no documents to that effect have yet been found.

Beauregard's orders to Hunt regarding the arsenal in Columbus were part of a broader plan to evacuate all government operations and as many of the private enterprises engaged in supporting the war effort as could be persuaded from west Tennessee, including Memphis. This decision was made necessary by military events on the northern border of Tennessee in early February, which culminated in the capture of Forts Henry and Donelson by Union forces, followed soon after by the occupation of Nashville, the state capitol. With this change in fortunes, Memphis was outflanked and in danger.

Sometime after the March land purchase, Leech and Rigdon must have turned their immediate attention to starting a Columbus manufactory because by May 1, a period of about six weeks, this advertisement in the *Memphis Daily Appeal* made clear the company was turning out swords:

Swords! Swords! Swords!

A large lot of fine infantry and field officer's swords just received from our manufactory in Columbus Miss. and for sale at the Memphis Novelty Works, corner of Main and McCall Sts. Seven or eight brass finishers wanted immediately at the Novelty Works.

Leech and Rigdon.¹⁷

This advertisement is important in better understanding the evolution of the firm because it is the first known commercial reference to a 'Columbus Manufactory' and the first public mention of the new partnership. Further, the wording of the ad seems to make a distinction between the Memphis operation (Memphis Novelty Works) and the Columbus Manufactory (Novelty Works).

Not only was the firm busily engaged in the Columbus manufactory, it was also maintaining the private sales effort in Memphis, as well as fulfilling the terms of the sword

contract. Regarding the latter, Captain Logwood's receipt records for the period January through early March continued to reveal this recurring curiosity-artillery swords:

**Receipts, 1862
January to Early March¹⁸**

Cavalry Swords	770
Artillery Swords	111
Artillery Swords With Belts	342

Perhaps the sword contract was modified to include artillery swords or there was a separate contract, but if so, no record has survived. Or maybe Logwood had received instructions to accept and authorize payment for most any high quality war material for the records offer ample evidence that the firm was selling such to the government.

By early May, near panic must have swept through Memphis as evidenced by the wording in this *Memphis Daily Appeal* announcement of May 8:

Notice! Swords! Swords!

A few more infantry and field officer's swords, which will be sold cheap if application be made today at the Novelty Works. All persons who have swords left for repairs are hereby notified to call for them today, as we are going to start for Columbus Miss. Friday morning. Leech and Rigdon.¹⁹

This was the point at which Leech and Rigdon abandoned their Memphis roots and headed to Columbus, not to return until after hostilities ceased some three years later. The Memphis Novelty Works was now closed.

From mid-March until May, Captain Logwood's receipt records show no deliveries of swords or any other material from the firm. Either Logwood was also transitioning to Columbus or sword delivery was disrupted temporarily or both. When deliveries did begin again in mid-May, Logwood was once again at his post as MSK, this time in Columbus. Receipts from Leech and Rigdon were initially slow, then picked up in June, July and August but by September had begun to tail off. The variety of material received had increased markedly:

**Receipts, 1862
Mid-May to Mid-November²⁰**

<i>Cavalry Swords</i>	
Finished	707
Finished w/Belts	12
Refinished	108
Scabbards Only	174
<i>Artillery Swords</i>	
Finished	373
Finished w/Belts	270
Sergeant's Swords	18

Sabre Bayonets

Finished	425
Unfinished	394
Scabbards	519
Sets of Gun Mountings	1,289½
Spurs and Straps (Sets)	800

During the summer of 1862, while the manufacturing of swords and other war material was in full swing, another important chapter in the Leech and Rigdon history was heralded for the first time in an August advertisement in the *Memphis Daily Appeal* (published at that time in Granada, Mississippi). This advertisement, discovered in the late 1990s, is headlined 'Novelty Works' with the principles noted as Thos. Leech and C. H. Rigdon. Midway in the advertisement is this startling news:

We have further increased our capacity and are now manufacturing a very superior Navy Repeater on the same plan and fully equal to Colt's patent (Figure 3).²¹

This was a truly remarkable achievement, because in a relatively short period of time, from the land purchase in March to the August advertisement, complicated further by the relocation to Columbus, the partners were sufficiently far enough along in the development and production process to

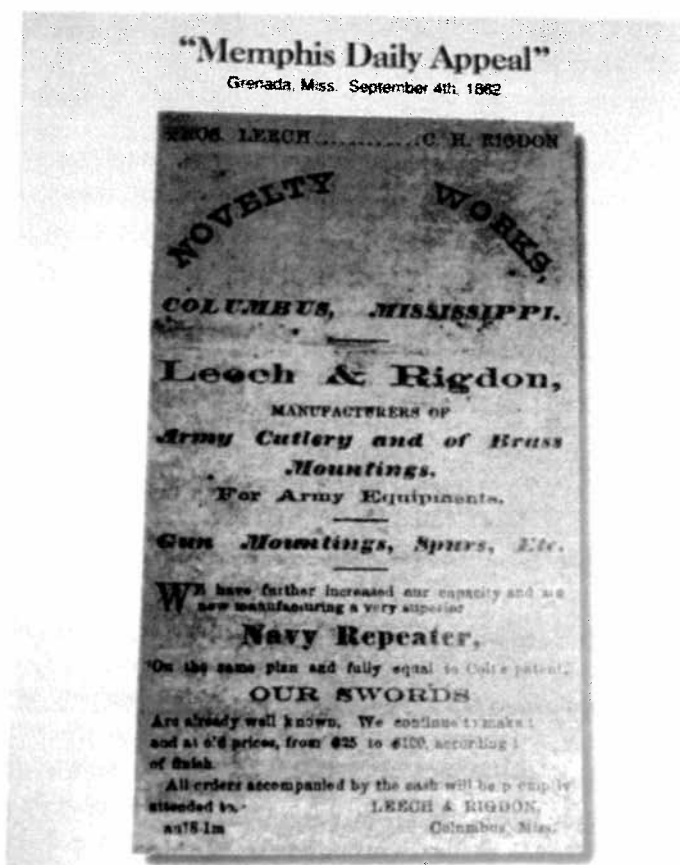


Figure 3. *Memphis Daily Appeal*, ad, Aug/Sept 1862, NOVELTY WORKS, Thos. Leech, C.H. Rigdon.

offer .36 caliber repeaters for sale to the public. How had such an accomplishment come about? Unfortunately, the records do not exist to be able to piece together any of the details. As with many things about the activities of Leech and Rigdon, I am left with a strong measure of speculation.

I believe that with the March land purchase, the partners had always planned the production of revolvers would take place in Columbus at a suitable location. Regarding the equipment, it may have been developed and/or purchased in either Memphis or Columbus but again, it makes sense that the location was Columbus. It is equally unclear as to who may have been the driving force behind such an undertaking. Charles Rigdon probably had the technical and mechanical background and experience to be able to apply his considerable skills to revolver development and manufacturing. Clearly, Thomas Leech did not. Perhaps there was some other individual or individuals that assisted in the effort but if that were the case, their name(s) and contribution(s) have been lost to history. Most writers and collectors have the opinion that the credit belongs to Rigdon and this may well be the case. Since nothing definitive has come to light, C. H. Rigdon remains the most logical choice. Further support for this hypothesis is to be found as this narrative unfolds. You will note that although Leech did not stay involved until the end, Rigdon did and remained the one constant presence through the many disruptions that would continue to plague their revolver manufacturing efforts until the end.

Regardless of the obstacles that had to be overcome or who was/were the brains and hands behind the enterprise, the partnership was firmly in the revolver business offering a well-made, .36 caliber, 6 shot, round barrel, iron frame model with an octagonal top barrel housing and a recoil shield with no cap release groove. The bore featured seven lands and grooves with a right hand clockwise twist. The post front sight, backstrap and triggerguard were brass; the one piece wood grip was walnut and all other parts iron. The few surviving examples of the early guns clearly show the firm was still in the process of attempting to standardize specifications—one example involves barrel length. Serial number 26 (Figure 4) has a slightly longer barrel (by nearly ¼ inch) than does number 25 (with the standard 7½ inch barrel).²²

The early guns had a loading lever with a ball type end. Around serial number 121, this was changed to a ball and pin type end, which would serve as the standard until serial number 1500. The reason for the change was to better secure the loading lever when the gun was discharged. The ball type end had proved unsatisfactory in this regard because when fired, the shock to the frame caused the loading lever to become unseated from the catch and drop, not a happy circumstance. Another important feature was the use of safety pins on the shoulders of the cylinder between the



Figure 4. Leech and Rigdon revolver #26, Columbus, MS production, "LEECH & RIGDON" barrel stamping.

nipples and a slotted hammer face with which to engage these pins.

The barrel flat stampings serve as another useful clue into the activities of the firm during the early days. Serial numbers 11 and 15, as well as one gun without a serial number, believed to be early production, carry a barrel stamping LEECH & RIGDON NOVELTY WORKS CSA in small size letters. This stamping was changed at some point before number 25 to simply LEECH & RIGDON and this wording remained in use until sometime after number 457. The use of only NOVELTY WORKS in the early stamping supports the theory of Columbus production, since after the move, the partners were no longer using Memphis as part of the firm name. This change is also noted on the cavalry swords where Memphis was dropped from the stamping on the guard and only "Novelty Works, Thos. Leech and Co." in two lines remained.

For many years, it was widely believed as an article of faith that Columbus production did not exceed 75 completed revolvers. This conclusion had been advanced by some early writers, and repeated through the years, based upon a November 26, 1862, letter from Leech and Rigdon to General John C. Pemberton, Jackson, Mississippi:

Columbus Miss Nov 26/62

*General Pemberton
Jackson Miss
General,*

We are manufacturing Navy Repeaters (Colt's Patent) and have written to Col Gorgas respecting a contract with the government offering to furnish at \$55.00 each. Do not expect reply for the next 10 days. In the meantime we are busily at work, turning out from 25 to 30 per week. Having no contract we would ask if our hands will be interfered with by the action of the "Conscript Laws" or whether they are exempt by virtue of their employment - would feel very much obliged by a distinct answer from you

We have on hand about 75 pistols which are ready to turn over to the department at the above prices, at any time.

Major Downer of the Arsenal at Richmond reports very favorably of our work. We think it fully equal (with the exception of a little show) to Colt's.²²

Because of the late 1990s discovery of two *Memphis Daily Appeal* advertisements [one with an August 1862 date (cited earlier) and another from September], this long held assumption regarding the extent of Columbus production is in need of re-examination. If one were to assume a rather conservative number for the average weekly production (for example,

20 completed revolvers) and further, a total of 15 weeks production time (August through late November), you might conclude the total Columbus production, up until the time of the Pemberton letter, was closer to 300 and perhaps, even more. I believe this higher number is, in all likelihood, the reality. This new theory about the Columbus phase will have important ramifications not only in the examination of the total production, but also regarding the number of revolvers produced at the later manufacturing locations.

The letter to Pemberton makes clear the partners were still hopeful of securing a government contract. Therefore, with the exception of the few samples submitted to the Richmond Arsenal for evaluation, all Columbus production, over 300 guns, ended up as commercial sales to individuals. To further support this conclusion, Captain Logwood's records show no receipts for pistols/revolvers from Leech and Rigdon at any time, either in Memphis or Columbus.

Many mysteries remain surrounding the Columbus phase, but one of these has been at the top of the list for years—the location of the pistol manufactory. The March land purchase by the partners was for adjacent residential property, likely unsuited for arms production. Further, since there is no record of any other land purchase by the partners, there remains the prospect of rental or leased property that would have access to steam or water power. Again, there is no such record. The only other possibility, and the most logical one, is that Leech and Rigdon had access to space in the newly completed Briarfield complex. This possibility is further supported by the action taken by the partners as a result of events in late 1862 when Major Hunt, now in command of Briarfield, received orders from Colonel Josiah Gorgas, C. S. Ordnance Department, to relocate all ordnance stores and production equipment to the arsenal in Selma, Alabama—an undertaking made necessary by the threatening movements of Union forces under the command of Major General

William T. Sherman.²⁴ Leech and Rigdon, realizing the impact to their operation by the impending move of their Briarfield support system and lacking another suitable location in Columbus, made their own plans to follow suit. During December, the partners' decision to relocate is borne out by Captain Logwood's receipt records for that month reflecting a variety of materials, equipment and miscellaneous items turned over to him by Leech and Rigdon:

Receipts for December²⁵

Sword Handles & Guards15
Repaired Enfield Rifle1
Spurs & Straps (Prs.)225
Sword Scabbards12
Grind Stones3
Materials (lbs)	
Poted Iron3,155
Bundled Iron937
Scrap Iron1790
Cast Iron2,400
Steam Engine1

Sometime in the December/January time frame, the massive undertaking to relocate the Briarfield machinery, equipment and stores to Selma was begun. The Leech and Rigdon operation in its entirety was probably a part of the same move. Although no hard evidence about the move has been found, Bill Albaugh speculated that it likely occurred in several stages. First by rail to Mobile, Alabama, a distance of 175 miles, where everything was off-loaded to riverboats for the move to Selma, another 175 miles. For reasons unknown today, the machinery and other equipment of Leech and Rigdon continued on by rail 150 miles to Atlanta and then another 75 miles to Greensboro, Georgia, where they stopped and began to reestablish their manufactory.²⁶ The next chapter in the Leech and Rigdon story was about to begin.

As an aside, for many years, some collectors have held the opinion that during the move from Columbus, Leech and Rigdon set up operations in Selma for some undetermined amount of time before moving on to Greensboro. In fact, some unmarked short swords and/or naval cutlasses have been unofficially classified by collectors as Selma production done by Leech and Rigdon. The correspondence cited below makes it unmistakably clear that by early February, after a move of nearly 600 miles in just over a month, the partners were ready to restart production in Greensboro. Therefore, any support for Selma operation is rendered impossible simply because there was not sufficient time in the chronology.

The following letter was sent by the partners to Major W. R. Hunt at Selma, in early February 1863, from their new location, advising him of their present circumstances:

Greensboro Ga

Feb'y 6/63

Major W. R. Hunt

Selma Ala

Dear Sir:

We have located at this point and have more room and power than we can use on our pistol contract. We can devote one floor 36 x 45 (well lighted) to the repair of guns and have power to spare for all of the necessary machinery.

Should be pleased to make satisfactory arrangements with Briarfield Arsenal for such work, hands and machinery. Your kind offices to this end are solicited.

In addition to our extra power, we have 4 acres more ground than we can use and this is one of the best locations that can be selected, being on the Georgia R. Rd, midway between Atlanta and Augusta. Leech & Rigdon.²⁷

Among the informative details, perhaps the most important revelation in the correspondence to Hunt is the matter of the long awaited pistol contract. By early February, it was clearly in hand and was followed soon after by a receipt for funds advanced found recently in the Archives:

Received Augusta Ga, March 6, 1863, of Lt. Col. Geo. W. Rains CSA Ten thousand dollars being the amount advanced under contract with the Confederate Government for the manufacture of pistols.

Leech and Rigdon²⁸

Unfortunately, no copy of the referenced contract has been found, so important details such as quantity, delivery schedule and duration remain unknown. However, a recently discovered document authorizing payment to Leech and Rigdon, dated January 4, 1864, confirmed that the price was indeed \$55 per pistol, less 25% for advanced funds, thereby providing confirmation of the price.²⁹

With their arrival in Greensboro, the partners must have felt their circumstances were most promising. The operation was now located deep in the interior, presumably safe from the threat of the Union Army. The site was a good one—on the railroad line with access to materials and equipment from the arsenals in both Atlanta and Augusta. There was a satisfactory facility in which the revolver manufacturing could flourish with abundant power and room to expand. Importantly, there was a contract in hand and advanced funds in the bank.

In the spring of 1863, the partners seem to have decided to exit the sword making business and offered for sale a variety of material that would likely have been associated with such activity. These materials were detailed in this advertisement dated April 21 (publication name unstated but probably the *Greensboro Argus*):

1861 and 1862. In above barrels: water, 400 lbs. (water 200
 lb., 200 lb. (water), 150 lb. (water) with 500 lb. 74, 100 lb.
 German steel, 100 lb. brass and copper wire, 50 lbs. leather
 gear

Leech and Rigdon,
 Greensboro, GA

With the sale of these materials, the sword making business of Leech and Rigdon passed into history, and full attention was turned to revolver production and to the extent possible, arms repair.

Revolver manufacturing (Figure 5) continued unabated until December 1865, when for reasons unknown, the partnership was dissolved. The record of this dissolution is located in the files of Greene County, Greensboro, Georgia, and states that for the sum of \$10 and other valuable considerations, Charles H. Rigdon deeded his entire interest in the Greensboro property to Thomas Leech.³¹ The last delivery of Greensboro production to Captain Isadore P. Girardy, military store keeper at the Augusta Arsenal, must have occurred sometime in late 1865. A document dated January 4, 1864, and signed by Colonel George W. Rains authorizing payment for "117 pistols @ \$55.00 each less 25%" was found in a recent Archives search. The payee is the firm of Leech and Rigdon.³²

The activities of Thomas Leech post-dissolution remain cloudy but not so with Charles Rigdon who, in January 1864, formed a co-partnership, announced in the *Augusta Chronicle and Sentinel* dated January 27:

The undersigned have formed a copartnership under the name and style of Rigdon, Ansley and Co for the purpose of manufacturing pistols (Colt's Navy Repeaters) under contract with the Government of the Confederate States. Said partnership to date from January 1, 1864 and continue five years. Office at 300 Broad Street.

Signed, Charles H. Rigdon, J. A.

Ansley, A. J. Smith, Charles R. Keen³³



Figure 5. Leech and Rigdon revolver #895 near the end of production, Greensboro, GA. LEECH & RIGDON CSA barrel stamping, from the estate of Gen. George G. Meade.

Further insight into the business of the new enterprise is found in a court transcript from early that spring in the case of J. A. Ansley regarding his status vis-à-vis the Conscription Laws:

Charles H. Rigdon testified that he is a member of the firm of Rigdon, Ansley and Co carrying on a contract with the government for the manufacture of pistols, known as Colt's Repeaters, engaged to produce a certain number each month, said contract bearing date January 1, 1864 and binding the said firm to carry out a contract made by Leech and Rigdon with the government dated March 6, 1863.³⁴

Captain Wescom Hudgins, U.S. Ordnance Department and, among his other duties, inspector at the manufactory, testified at the same proceeding that the operation currently employed 60 hands and was planning to add nearly 200 more.³⁵

These court records establish that the January contract was an extension of the original contract (March) awarded to Leech and Rigdon, and with that, the new firm was bound to continue producing the standard model revolver. In order to accomplish this, Charles Rigdon and his partners would require the Greensboro machinery and as many of the old hands as could be persuaded to move to Augusta. On both counts, Rigdon must have been successful because revolver production was quickly restarted with the only interruption occurring as a result of the movement of the entire Greensboro operation to Augusta. The Augusta location for the manufactory was secured in February/March and was identified in a lease for waterpower as being "between the second and third levels of the canal and on the west side of Marbury St."³⁶

The reasons Rigdon moved to Augusta remain unclear to this day. Perhaps he wanted to be closer to the support system that the Augusta Arsenal provided; maybe he needed the help of his new partners to manage the business; or maybe with Sherman's army preparing to strike for Atlanta, Augusta

would be that much further away from the coming campaign than Greensboro. Regardless, he had arrived in that city and would remain there until the end.

For many years, collectors and Civil War enthusiasts have debated the twin questions of the total number of Leech and Rigdon revolvers produced, and the matter of the split between the Greensboro and Augusta locations. The most widely held view was first advanced by Albaugh/Stewart in their 1953 work *The Original Confederate Colt* and again, in 1963 by Albaugh/Benet/Simmons, *Confederate Handguns*. Their conclusions have been echoed by other writers and collectors since that time. The theory was

that since few revolvers were produced in Columbus (the 75 pistols mentioned in the November 1862 correspondence), the total Leech and Rigdon production must have been around 1,500 revolvers—the majority at Greensboro (1,000 revolvers) and the balance in Augusta (500 revolvers) (Figure 6).

Support for their theory came from an examination of barrel stampings and related serial numbers. The early writers knew the highest serial number with LEECH & RIGDON CSA barrel stamping was number 1481 and the lowest numbered Rigdon and Ansley revolver was 1490, with barrel stamping ADDRESS C H RIGDON AUGUSTA GA. (Recently, several other revolvers have turned up that are also in this serial range and structurally the same layout as 1490, though not marked in exactly the same manner.) Therefore, they accepted the notion that this point in the numbering sequence (around 1490) marked the end of the Leech and Rigdon production. They concluded the original contract must have called for a total of 1,500 revolvers. In light of newly discovered material, this conclusion needs to be examined.

The flaw in this part of the theory is uncovered by the realization that Columbus production was more likely in the 300s and none of this production was shipped to the government. If one assumes Columbus production was only 300 revolvers and serial number 1490 marked the end of the Leech and Rigdon production, then the total Leech and Rigdon contract production was actually in the neighborhood of 1,200 revolvers or less, not 1,500.

Another way to look at the same issue is to examine the size of the die stamp used for the firm name at various stages in the production. Beginning with the earliest production, a smaller die stamp was in use until around number 377 when a larger size die stamp is first noted in the sequence. I believe that the die stamp change probably occurred at the time of the move from Columbus to Greensboro when it was

either broken or lost. This finding, which further supports the previously described Columbus production reexamination, leaves little doubt that Columbus production ended in the 300 serial number range. By picking the mid point of that range, 350 revolvers produced (admittedly, somewhat arbitrary), the total Leech and Rigdon contract production would have been around 1,140 guns completed. Therefore, on the low end, the number produced was 1,140 guns and on the high end 1,200 guns.

Regarding the second question of Greensboro versus Augusta output, I believe that the early theory is also incorrect and that by examining a change made in revolver specifications, one may discover the answer to this puzzling question. Number 895, with the safety pins, is one of the last to exhibit this specification, for beginning with serial number 903, the use of the six safety pins on the rear of the cylinder was discontinued. The no safety pin cylinder remained the standard until near the end of the 1400 range when the transition to the 12 stop cylinder began to appear (the Rigdon and Ansley model).

Corroborating evidence is found in orders issued by Colonel Gorgas to Captain Wescom Hudgins dated February 22, 1864, in which Hudgins was instructed, among other duties, to visit Augusta "for the purpose of inspecting pistols manufactured by Rigdon, Ansley and Co". The orders specifically addressed the issue of the lack of safety pins in the current production (Leech and Rigdon model):

In the pistols made by Rigdon, Ansley & Co., the use of the safety pins has been abandoned without introducing a substitute for them; the parties propose the use of another set of check notches in order to prevent the cylinders revolving when the hammer is not upon the cap.²⁷

It is evident from this letter the operation was located in Augusta and that the no safety pin cylinder was the standard in use. Therefore, it seems reasonable that circa 903 was the point at which Leech and Rigdon model production moved to Augusta for completion by the new Rigdon, Ansley and Company.

If you accept that the total Leech and Rigdon contract production (i.e., post Columbus) was only 1,140 completed revolvers (the low end of the production estimate) and that production at Greensboro began around serial number 350 (it could have been even higher at 377) and continued until around serial number 900 when production was moved to Augusta, then Greensboro production (under Leech and Rigdon) would have been around 550 completed guns. Further, if serial number 1481



Figure 6. Rigdon and Ansley revolver #1613, Augusta GA production, AUGUSTA GA CSA barrel stamping.

marked the end of the 6 stop cylinder model, the production at Augusta (under Rigdon and Ansley) would have been around 590 guns for a total of 1,140 completed Leech and Rigdon revolvers delivered to the government against the contract. This conclusion represents a different way of looking at what has been for collectors the important question of the output and related serial number ranges of the standard model (6 stop cylinder) of these two companies.

There is another matter dealing with the progression and changes to the barrel flat stamping both in die size and wording. As noted earlier in this work, at some point before serial number 25 and continuing until around 375, a small size die was in use with the wording LEECH & RIGDON. Around number 377, a larger size die came into use but the wording remained LEECH & RIGDON. At some point after number 457, the wording was changed to LEECH & RIGDON CSA and this remained in use until the late 1400 number range. There is reason to believe the addition of CSA held some significance and perhaps, was meant to indicate these guns were the property of or were produced for the government, i.e., contract guns. You will soon note that the use of CSA in the stamping continued until production ceased lending additional support to the theory that CSA meant government contract guns.

The serial number range from 377 to 457 contains only a few surviving examples of revolvers stamped with the large die and the wording LEECH & RIGDON, guns which were likely assembled at Greensboro after the government contract. Why these revolvers were not stamped CSA remains a mystery. While there are a variety of possible explanations, one might be that the die with CSA was not available during this phase of production, and, another might be that the partners were waiting approval from the Ordnance Department to make this change in the stamping. Regardless, the decision must have been not to delay turning out finished revolvers. From this faraway point in time, the real reason may never be known.

Number 457 remains the highest numbered surviving example of the LEECH & RIGDON large die stamping, but there is, unfortunately, a gap of nearly 40 revolvers before the earliest known revolver marked LEECH & RIGDON CSA using the large die is noted after serial number 496. Within these missing numbers lies an important clue—the point in the numbering sequence when the CSA marked guns were phased into production at Greensboro. Until one of the missing revolvers comes to light, number 496 continues to hold that position in the Greensboro phase of the Leech and Rigdon history.

The transition to the standard model Rigdon and Ansley revolver began between serial numbers 1482 to 1500 with the introduction of the 12 stop cylinder and continued to number 2375, the highest serial number known to date.

These well-made, .36 caliber, iron frame revolvers featured the new cylinder specification, cap release groove in the recoil shield and the Colt type loading lever end. The large size die stamp was used to mark the barrel flat, initially AUGUSTA GA CSA, until changed to CSA in the late 1600/early 1700 range and continued to be the standard until the end. The reason for this change is unknown but the most likely explanation is that the die stamp broke or was otherwise rendered unusable. The size of the die stamp used for the numerals was also changed to a larger size circa number 1970 and remained in use until 2375. Based on these facts, the early writers concluded, and I agree, that total production of the Rigdon and Ansley model revolvers was around 900 completed guns before the deteriorating military situation intervened and work was halted.

In the serial number range of the Rigdon and Ansley production, there are two additional revolver markings that are worthy of some discussion. The first bears on the inspector's cartouche, which is stamped into the bottom of the wood grip. The first version, WH inside a diamond, began to appear in the latter part of the Leech and Rigdon range (serial number 1285) and then appeared later as a WH inside a parallelogram, the standard found in the serial number range of the Rigdon and Ansley model revolvers. The inspector, in this instance, was none other than Wescom Hudgins and it should be noted that his stamp is not found on all Rigdon and Ansley model guns. The explanation for this is straightforward. Hudgins' duties, as detailed by Colonel Gorgas, were to perform inspections at the Cook and Brother arms manufactory in Athens, as well as the Rigdon and Ansley facility in Augusta. Since his visits to Augusta were random, the guns produced during his absence were simply not subjected to his inspection and stamping.

The second mark involves an unknown number of revolvers that were stamped on the bottom of the wood grip with a South Carolina designation, which appears variously as S. C. or S. Ca. These marks are found randomly from number 971 to nearly 1300. There are a number of exceptions. Revolver number 1061 is stamped S. CAR., and yet another gun, in the Rigdon and Ansley 2300 serial range, is stamped S. C. Number 1282, the W. H. Hood revolver, is stamped S.C. The reason for these South Carolina marks has never been determined although some collectors have believed that Rigdon and Ansley must have had a contract with South Carolina to produce a certain number of revolvers and these guns were so marked. If a contract existed, a copy has never been found nor has any reference to a contract ever surfaced. Lacking a definitive explanation for these marks, I believe that the South Carolina mark was intended to identify either acceptance by, or issuance from the C. S. Ordnance Department at the arsenal in Columbia, South Carolina.

Regarding acceptance, it seems rather unlikely that some guns would have been selected randomly for shipment to Columbia rather than received at the arsenal in Augusta. If the mark was used to identify the issuing arsenal (after receipt from the Augusta Arsenal), it is strange that no other arsenal marks (i.e., Richmond, Macon, etc.) have been encountered. Until further evidence comes to light, the South Carolina mark must remain another mystery among many.

In November 1864, military affairs for the Confederacy continued to deteriorate and as General Sherman approached from the west, the decision was made to dismantle the arsenal at Augusta and move everything to a safer location. Apparently, much of this vast array of stores and equipment did not make it out of the city. Some reportedly reached the safety of Athens, Georgia, while some simply disappeared.³⁸

Charles Rigdon, on the other hand, seems to have kept his machinery and workers in hand until at least late November when the Rigdon Guards, part of the local defense force that had been formed in June 1864, was called out to fight at Griswoldville, Georgia, on November 22. In the action that followed, the Guards suffered eight wounded (several seriously) and three missing. The Guards were called into action once again at Grahamville, Georgia on December 4. Casualties, if any, were not reported.³⁹

During this time of chaos and uncertainty, Captain Hudgins continued to make his rounds as he had been ordered by Colonel Gorgas back in February. His last recorded visit to Augusta was on January 27, 1865, and since he did not return again, this is likely the point in time that marked the end of the Rigdon and Ansley operation.⁴⁰

And what of Thomas Leech? After the dissolution of the partnership in December 1863, Leech may have continued to turn out revolvers although, if he did, with what equipment and workers is not known. The surviving evidence of such an effort may be a .36 caliber revolver stamped LEECH & CO CSA bearing serial number 125. No other such revolvers are known. At some point, Leech returned to Memphis and was listed in an early post-war city directory as a Cotton Broker located on Front Street. His name continued to appear in the directory until 1874, after which time he was no longer listed.⁴¹

By 1866, Charles Rigdon was once again listed in the Memphis city directory as a machinist. His death was reported in the Greensboro *Argus* on October 5, 1866:

*Died; Charles H. Rigdon, on Monday evening at 7 1/2 O'clock, of inflammation of the bowels; age 43 years ...*⁴²

He is buried in the Elmwood Cemetery, Greensboro, Georgia.⁴³

This ends the remarkable odyssey of Thomas Leech and Charles H. Rigdon and all their associates during the

great Civil War. I am hopeful that over time more information about their endeavors will surface and that someone will step forward to fill in a few more of the gaps. In the meantime, perhaps collectors of these wonderful revolvers will want to re look at the serial numbered guns in their possession and revisit the subject of just when and where their guns were likely produced and what it took to do so.

ACKNOWLEDGEMENTS

I would like to thank the following individuals for their generous help in the preparation of this article.

Bruce Kusrow, Reston, Virginia, allowed access to his personal records, as well as his *Progression of the Rigdon Revolvers* (August 2010). Mr. Kusrow's notes, records, and counsel were invaluable in the preparation of this article.

Gordon Blaker, Lawton, Oklahoma, helped provide information from his notes and records on Augusta and the Augusta Arsenal.

Bill Floyd, Annapolis, Maryland, helped with his diligent research of Confederate material in the National Archives and Records, Washington D.C.

Thank you to Bill Beard, Monteagle, Tennessee, for his friendship over 25 years and sharing an abiding interest in all things Leech and Rigdon.

ENDNOTES

1. Author's Collection.
2. Ibid.
3. Ibid.
4. Gary, William, "Confederate Revolvers", pp. 2-11.
5. Albaugh/Benet/Simmons, "Confederate Handguns", pp. 39-60.
6. Ibid, pp. 42-43.
7. Ibid, p. 43.
8. Ibid, p. 43.
9. Confederate Generals and Staff Officers, M331.
10. Graves, Frank, *The Gun Report*, Jan/Feb 2010, pp. 14-26.
11. Ibid.
12. Albaugh/Benet/Simmons, *Confederate Handguns*, p. 42.
13. Ibid, p. 42.
14. Confederate Papers Relating to Civilians and Business Firms, Box 964.
15. Minutes of City of Columbus, MS, December 1857-April 1866.
16. Lowndes County, MS, Records Book 33.
17. Albaugh/Benet/Simmons, *Confederate Handguns*, p. 43.

18. Confederate Generals and Staff Officers, M331.
19. Albaugh/Benet/Simmons, *Confederate Handguns*, p. 44.
20. Confederate Generals and Staff Officers, M331.
21. Author's Collection.
22. Ibid.
23. Confederate Papers Relating to Civilians and Business Firms, Box 964.
24. Albaugh/Benet/Simmons, *Confederate Handguns*, p. 45.
25. Confederate Generals and Staff Officers, M321.
26. Albaugh/Benet/Simmons, *Confederate Handguns*, p. 45.
27. Confederate Papers Relating to Civilian and Business Firms, Box 964.
28. Ibid, Box 964.
29. Ibid, Box 964.
30. Albaugh/Benet/Simmons, *Confederate Handguns*, p. 46.
31. Ibid, p. 47.
32. Confederate Papers Relating to Civilian and Business Firms, Box 964.
33. Albaugh/Benet/Simmons, *Confederate Handguns*, p. 47.
34. Ibid, p. 48.
35. Ibid, p. 56.
36. Ibid, p. 56.
37. Ibid, p. 49.
38. Ibid, p. 57.
39. Ibid, p. 57.
40. Ibid, p. 57.
41. Ibid, p. 60.
42. Ibid, p. 60.
43. Ibid, p. 60.

BIBLIOGRAPHY

Albaugh, William A. III, Benet, Hugh Jr., and Simmons Edward N., *Confederate Handguns*, Philadelphia, PA, Riling and Lentz Publisher, 1963.

Albaugh, William A. III, Steuart, Richard D., *The Original Confederate Colt*, 1953, Reprint, Wilmington, NC Broadfoot Publishing Co., 1993.

Anderson, Cecil W., *The Enterprising Mr. Thomas Leech*, North South Trader Magazine, July-August 1985: 12-18

Blaker, Gordon A, Bragg, C. L., Ross, Charles D., Jacobe Stephanie A., Savas, Theodore P., *Never For Want of Powder*, Columbia SC, University of South Carolina Press, 2007.

Confederate Papers Relating to Civilians and Business Firms, National Archives, M346, Group 109, Box 964, National Archives and Records Administration, Washington, D.C.

Confederate Generals and Staff Officers and Non-Regimental Enlisted Men, M331, Record Group 109, National Archives and Records Administration, Washington, D.C.

Confederate Generals and Staff Officers and Non-Regimental Enlisted Men, M258, Roll 111, Nitre and Mining Bureau, National Archives and Records Administration, Washington, D.C.

Conestoga Auction Company, *Collections of Tea Meredith and Gary Miller*, November 2001: 72-76.

Gary, William A., *Confederate Revolvers*, Dallas TX, Taylor Publishing Co., 1987.

Graves, Frank, *The Shawk and McLanahan Navy Revolver*, The Gun Report, January-February 2010: 14-26.

Lowndes County Records, Columbus, MS, Book 33.

Meredith, Edward J., *Variations of the Leech and Rigdon Revolver*, ASAC Bulletin Number 72, 1995: 16-25.

Minutes of City of Columbus, Columbus, MS, Dec 1857-Apr 1866.

770-329-4984

John Sexton
1962 Portage Landing North
North Palm Beach, FL 33408

John@CivilWarDealer.com

John Sexton
Qualifications as Appraiser



Partner in Stone Mountain Relics, Inc., Stone Mountain, Georgia 23 years selling over \$25,000,000 in Civil War memorabilia between 1993-2002 including firearms, swords, uniforms, accoutrements, flags, documents, etc...

I have worked as an independent appraiser and consultant in the field of Antique American Historical Property since 2002

Appeared as appraiser of Arms and Armor on Antique Road Show, seasons 2, 3 & 4

Co-author of Confederate Bowie Knives published by Man at Arms, 2012



Accredited appraiser with the International Society of Appraisers
Accredited appraiser with the Appraisers Association of America
Current USPAP Certification, 15 hour, AAA, NYC, September 23-24-2011
USPAP 7 hour update, AAA, Palm Beach, February 1, 2012



Lifetime Memberships In:

Southeastern Antique Arms Collectors Association
Pennsylvania Antique Gun Collectors Association
Ohio Gun Collectors Association
Texas Gun collectors Association
Ohio Valley Military Society
Forks of the Delaware Antique Weapons Association
Antique Bowie Knife Association
Colorado Gun Collectors Association

**LEECH & RIGDON NOVELTY WORKS
REVOLVER**

SERIAL NO. 15 - .36 CAL.

**ONE OF 3 AUTHENTIC LEECH & RIGDON
NOVELTY WORKS MARKED PISTOLS.**