

P. 153  
404 Jeffery-Hoffman  
Arms - Mag Mauser  
P. 2 s# 361  
L 23  
# 48029

se range, they  
right through  
they waste very  
in penetration

the right track  
bullets. They  
a. These 275-  
the 300-grain  
discontinued)  
ts in the .338  
ine Bitterroot  
l to its jacket

it has also given perfect performance on all Ameri-  
can and much African plains game, as it never sepa-  
rates the jacket and core and all reports are to the  
good on this fine bullet. Getting thousands of let-  
ters a year from all over the world, I feel I'm in a  
position to well evaluate about all such game bul-  
lets. I used Hodgdon's 4831 in all calibers and Earl  
Etter uses Hodgdon 870 powder in his full length .338-  
378 case.

### 9.3X74R AND .404 JEFFERY

Owners and users of these caliber rifles will be  
glad to know we now have a source of supply here  
in the U.S. of both calibers in loaded ammunition  
as well as modern Boxer-primed cases and bullets.  
Write to Joseph C. Devine, Eastern Sports Interna-  
tional Inc., Savage Road, Milford, New Hampshire  
03055. This firm imports from RWS in Germany  
about all calibers from .22 to .404.

Kynoch loaded the .404 with 60 grains of cord-  
ite and choice of 400-grain softnose, solid or split-  
jacket bullet. This is the best load, though they also  
loaded it with 70 grains of cordite and a 300-grain  
pointed bullet in solid-pointed or copper-pointed  
expanding bullet. I never cared for this load even  
though it was claimed to develop 2,600 feet per sec-  
ond. The 400-grain, however, is a very reliable and  
accurate load. Kynoch loads seem much lighter than  
the RWS modern load as they printed higher on  
the target with the same sighting.

Ross Seyfried and I worked up loads in my fine  
Hoffman Mauser using CCI magnum primers and the  
400-grain Kynoch or the 400-grain RWS bullets with  
85 grains of Hodgdon's 4831 powder. This load  
seemed to exactly duplicate the fine RWS loading and  
is very accurate and powerful. I like it much better  
than the old, now obsolete, cordite Kynoch loading.  
The big charge fills the bottleneck case up much bet-  
ter than faster powders and seems wonderfully accu-  
rate in our tests. Tom Siatos suggested expanding the

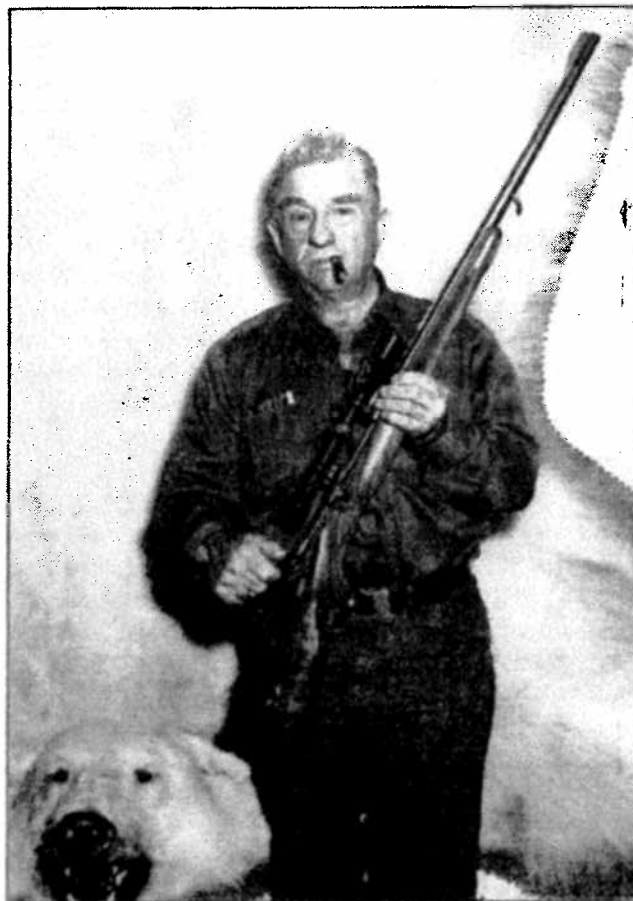
neck of this fine big cartridge to .45 and I told him it  
should be ideal and so it proved in the .460 G&A th  
they have now used successfully on all the great  
African game with 500 and 510-grain bullets at 2,300  
feet per second. They procured Boxer-primed cases  
from Norma, and now we have the same from RWS  
and excellent quality brass as well. RCBS of Oroville,  
California makes excellent dies for both the .404 and  
the 9.3x74R as well as the .460 G&A. I do not know  
the velocity of our .404 load but would expect it to go  
around 2,300 feet per second or possibly 2,400.

1055

## DECEMBER

### .338-74 KEITH

Several years back, I decided to neck down the  
9.3x74R German rimmed case to take our various  
.338 caliber bullets as the .30-40 Krag and .45-70  
were our only rimmed-case cartridges made in big-



Keith was a wildcatter of cartridges bar none. Here he is  
show with a .338-378 KT. The rifle is a Champlin &  
Haskins, largely designed by Keith.



*Keith had participated in a number of rifle matches at Camp Perry before the outbreak of war. This was taken as he posed with his Hoffman Magnum Mauser there.*

until you could see the bone of my arm. Finally the fever let up and the swelling started to go down, and I was able to get out and back to the school.

In my absence they had been studying the 37mm Browning automatic cannon. The instructor said, "Being as you haven't been here, Keith, you don't need to take this exam." I said, "I'll take it anyway." I did take it and got the highest grade in the class because it was so similar to the Browning .50 caliber machine gun.

After finishing the school I was shipped back to Salt Lake first, then Major Kerr and other officers at the Ogden Arsenal requisitioned me for service at Ogden Arsenal. I was slated to go to Fort Richardson out of Anchorage and be the civilian head of an ack-ack crew there. Major Kerr and the other officers there decided they needed me worse at the Ogden Arsenal as a small arms expert, so I took the position as inspector and head of small-arms testing at Ogden Arsenal. This was the base arsenal for the whole Pacific Theatre, and in addition we had 330,000 .50 caliber barrels there to spot-inspect for both Theatres.

*I had a crew of from 10 or 12 to 25 people*



*Camp Perry  
Hoffman Mag Mauser  
Rifle Matches*

*Hell I Was There  
P. 186*

*pt experi-  
luring his*

*ian men  
to stock  
ss them  
king the  
d all the  
ssed 500  
dded to  
ent. En-  
ines, .45  
op. The  
evening  
se didn't*

the same building, and put up boards to shoot through, but even then the lead dust from those bullets grinding up would soon have a cloud hanging over all of the firing room. All of us were coughing, spitting up black lead dust, until Major Kerr made them build a new proof house.

They also sent in carloads of bazookas. Word got out that some bazooka crews had been killed because they had blown up on firing. All the lathes in the machine shop were worked over until they would wrap wire around the body of the bazooka tube, and

April 1972

Page 6 of 1

		Make	Model	Calibre	Action	Scope	Serial #	Value
1	R 40	Marlin	336	44 Mag	Bolt	—	14468	150.
2	R 41	Sako	2-461	222 Rem	Bolt	K-L Weaver	111487	300.
	R 42	Ruger	77	243 Win	Bolt	Redfield 42x7	15	225.
4	R 43	Ruger	77	7mm Rem	Bolt	Leupold 6X	70-23527	225.
5	R 44	Ruger (Bull Gun)	77	25-06	Bolt	Weaver 4x12	70-31945	250.
6	R 45	Marlin (Carbine)	336	30-30	Lever	—	129093	150.
7	R 46	Winchester	94	30-30	Lever	—	NRA 43969	175.
		NRA Commemorative						
9	R 47	Marlin	M-1	22LR	Auto	Scope	None	75.
10		(Miniature of M-1 Carbine)						
11	R 48	Sentinel Arms Co	38	None	—	—	140	330.
12		1/2 Stock Percussion Replica "Plainsman" Fully Engraved						
13	R 49	Thompson Center Arms Co	50					
14		(Replica Hawk Min)						
15	R 50	British Lee Enfield	303 British				2073	200
16		Special Snipers Rifle		Full Stock & Handguard.			6582	50
17	R 51	Chaplin & Haskins	458 Win C&H Bolt	23 1/4 X			#1	
		Keith grade, Keith design externally						
19	R 52	Browning Olympic	338 mag	Mausser	Leupold 1X7378			750
20		Fully engraved		Bolt Action 4X				
21					German QD mt.			
22	R 53	Custom	338 Mag	FN Mag	Browning EK 777			1,200
23		Stokely Gail & Skip Bartlett		Mausser	4X			
24		Metal work Iver Henriksen						
25	R 54	Hoffman Arms Co					361	2000
26		Mag mauser Custom	404 Jeffry Bolt					
27		Fully engraved		mag mauser				
		new condition						
29		Gold Mountain Goat on Floor Plate						
30	R 55	Hoffman Arms Co	375 H&H				28171	1500
31		english Folding Leaf sights						
		H. Whalen Peep sight						
33	R 56	Chaplin & Haskins	(338-378)				61	2,000
34		Keith Grade (Keith-Thompson)						
35		Octagon barrel						
36		tiron sights						
	R 57	Chaplin & Haskins	375 H&H		3x 9X			
38		Keith Grade			Redfield		27	5,000
39		fully gold anlaid, octagon barrel			Leupold			
		2 Cape Buffalo on Trigger Guard			3 Power			
40		Mtn sheep on Trigger Guard & Left Side Receiver						