

RESERVE SET ON THIS ITEM

This option disappears
once the reserve is met.

Buy Now For:
\$950.00

Bookmark this auction!

SELLER
HANDLE: **carbine**

AUCTION ID: 89517

PRODUCT: J. Reid Derringer **CLICK HERE** to view image.

NRA GRADE: Fine

DESCRIPTION:

Click Here

RARE James Reid revolver in 22 rim fire caliber , serial number 27. This gun has a 3 1/2 inch octagon barrel that is marked on top " J. REID NEW YORK ". The gun has a blue finish with 50% on the barrel , 40 % on the cylinder and 35% on the frame mixed with some brown and some areas that are shiny and some small metal dings mostly on the barrel the 2 piece walnut grips are very good with no major damage and a small tight crack at the butt on the left side . The left side plate is brass as is the loading gate on the right. The gun has a old repair to the bolt lock. The gun is in good mechanical working order and some wear to internal parts . the bore has very good rifling and is mostly shiny . # 4716 . 22.00 S&h via USPS . 3 Day Inspection. See Pictures . Remember to buy it now . A very Rare Reid revolver , the same J.. Reid who made the Knuckle duster famous .

START BID: \$687.00
CURRENT BID: \$0.00
INCREMENT: \$20.00
BUY NOW: **\$950.00** **Click Here**
CLOSE DATE: 02/02/2009 8:00 PM (EST)
HIGH BIDDER: *(no bids yet)*
SELLER FEEDBACK & CONTACT INFO

BID ON THIS ITEM

BID HISTORY

TIME LEFT UNTIL END OF AUCTION: 6 days 34 minutes

This auction has been viewed **47** times.



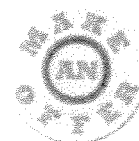
RESERVE SET ON THIS ITEMThis option disappears
once the reserve is met.**Buy Now For:**
\$925.00

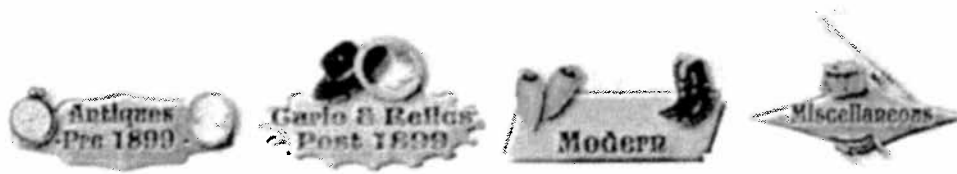
Bookmark this auction!

SELLER
HANDLE: carbine**AUCTION ID:** 91375**PRODUCT:** J. Reid Pocket Revolver **CLICK HERE** to view image.**NRA GRADE:** Fine**DESCRIPTION:**

Click Here

James Reid revolver in 22 rim fire caliber , serial number 27. This gun has a 3 1/2 inch octagon barrel that is marked on top " J. REID NEW YORK ". The gun has a blue finish with 50% on the barrel , 40 % on the cylinder and 35% on the frame mixed with some brown and some areas that are shiny and some small metal dings mostly on the barrel the 2 piece walnut grips are very good with no major damage and a small tight crack at the butt on the left side . The left side plate is brass as is the loading gate on the right. The gun has a old repair to the bolt lock. The gun is in good mechanical working order and some wear to internal parts . the bore has very good rifling and is mostly shiny . # 4885 . 25.00 S&h via USPS . 3 Day Inspection. See Pictures . Remember to buy it now . A very Rare Reid revolver , the same J. Reid who made the Knuckle duster famous . We except as payment money orders , bank checks and transfers . Major credit cards with a small surcharge .

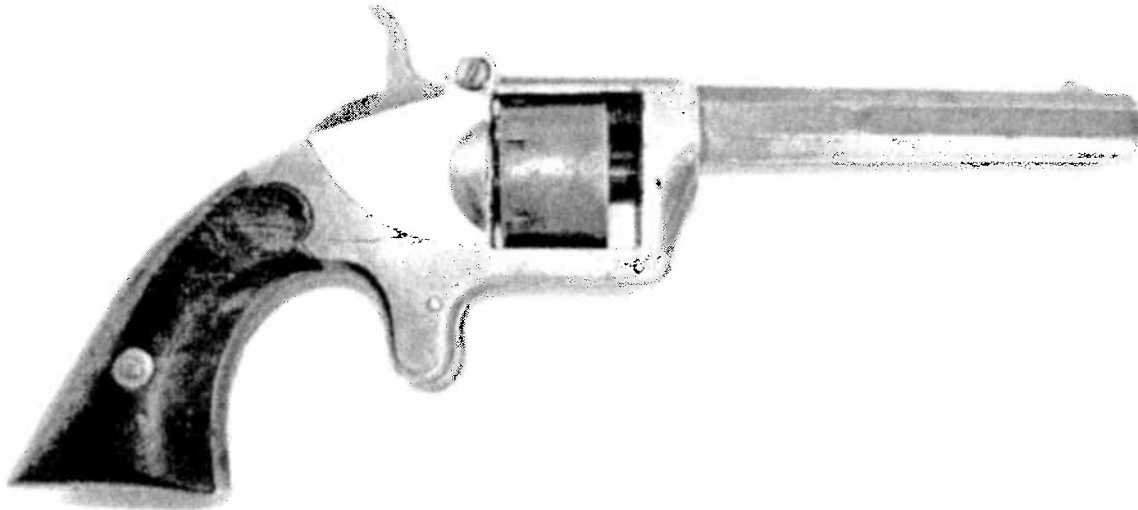
START BID: \$685.00**CURRENT BID:** \$0.00**INCREMENT:** \$20.00**BUY NOW:** \$925.00 **Click Here****CLOSE DATE:** 06/04/2009 8:00 PM (EST)**HIGH BIDDER:** (no bids yet)**SELLER FEEDBACK & CONTACT INFO****BID ON THIS ITEM****BID HISTORY****TIME LEFT UNTIL END OF AUCTION:** 11 days 23 hours 4 minutesThis auction has been viewed **54** times.



© A-Gun - Jiml Enterprises 1999

PRODUCT: J. Reid Pocket Revolver

DESCRIPTION: James Reid revolver in 22 rim fire caliber , serial number 27. This gun has a 3 1/2 inch octagon barrel that is marked on top " J. REID NEW YORK ". The gun has a blue finish with 50% on the barrel , 40 % on the cylinder and 35% on the frame mixed with some brown and some areas that are shiny and some small metal dings mostly on the barrel the 2 piece walnut grips are very good with no major damage and a small tight crack at the butt on the left side . The left side plate is brass as is the loading gate on the right. The gun has a old repair to the bolt lock. The gun is in good mechanical working order and some wear to internal parts . the bore has very good rifling and is mostly shiny . # 4885 . 25.00 S&h via USPS . 3 Day Inspection. See Pictures . Remember to buy it now . A very Rare Reid revolver , the same J. Reid who made the Knuckle duster famous . We except as payment money orders , bank checks and transfers . Major credit cards with a small surcharge .



BUY NOW: \$925.00

If you are not a registered buyer, [click here](#), or on "Buyer Registration" on the left. Registration is FREE; however, you will need a major credit card for AGE VERIFICATION.

By using this feature I agree to the [Terms and Conditions](#) set forth by A-Gun.com and Jimi Enterprises, Inc. I understand that the price shown does not include shipping & handling, insurance, or other fees associated with purchasing this auction item.

Enter your Nickname:

Enter your Password:

Buy Now Price: \$925.00



[Search the Web](#)
 Powered by

[Charter.com](#) | [Charter.net](#)
[gin40@charter.net](#)
[Sign Out](#) | [Help](#) | [Mail Settings](#)

[Compose](#)
[Get Mail](#)

[Search Index](#)
 Advanced Search

Folders (14 folders)
 Inbox (1)
 Draft(s)
 Sent Mail
 My Folder(s) [\[hide\]](#)
 Amazon
 Cecil
 Charter
 Computer
 Digital Magazine
 Ebay
 Family Tree
 Greenhouse
 Guns
 HSA
 Linda
 LU
 MAC13
 MAS
 Mill
 MISC
 Plants
 Shelby
 Shop
 Ubuntu
 Vector
 Vectric
 Wachovia
 Trash [\[empty\]](#)

Inbox
[Reply](#)

[Detail](#)
[Printable View](#)
 Move to:
 [Prev](#)
[Next](#)

CONGRATULATIONS! You are a winner on A-Gun.Com. You have won the following

J. Reid Pocket Revolver; Auction 91772

The seller has been notified that the auction is over and that you are the

All transactions from this point on are between you and the seller.

Seller Handle: carbine

Seller Email Address: jifrx@a-gun.com

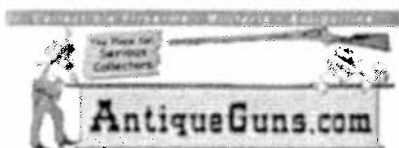
If you have experienced any problems with this transaction, email

Be sure to add your comments, good or bad, about this seller by going to any

auction by this seller and clicking on "SELLER FEEDBACK & CONTACT INFO"!

[Reply](#)
[Reply All](#)
[Forward](#)
[Delete](#)
[Report As Spam](#)
[Detail](#)
[Printable View](#)
 Move to:
 [Prev](#)
[Next](#)

Mailbox Usage
 You are using 7% of your mailbox (76,433 KB out of 1,024,000 KB)



[Home | View Auctions | Sell Your Collections | Register | Bidder Lookup |
 | Password Lookup | Search | Edit Profile | Fees | Logout |
 For Sellers: Sell An Item | Manage Current Auctions | Returned and Saved
 Auctions | Sold Auctions |

Browse
Auctions

Ending Today

New Today

Home

View Auction
Categories

Sell Your
Collection

Register

Bidder Lookup

Password
Lookup

Search

Edit Profile

Fees

Logout

Watchdog

Bid Tracker

View Account
Status

Post Feedback

Photo
Identification

Sell An Item

Manage Current
Auctions

Manage
Returned and
Saved Auctions

Manage Sold
Auctions

Sales Report

Ask Our Experts

Factory Letters

Research a
Soldier

Rules

Getting Started


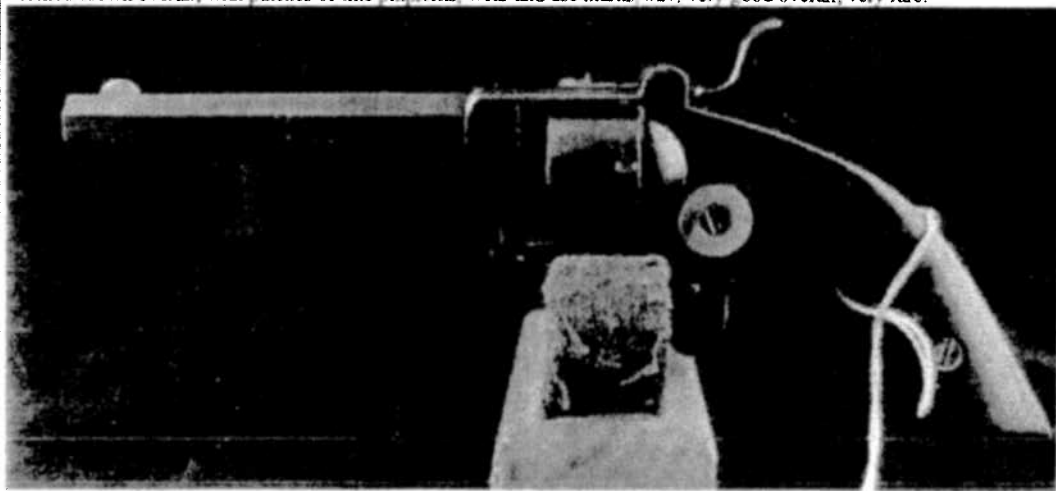
FAQs

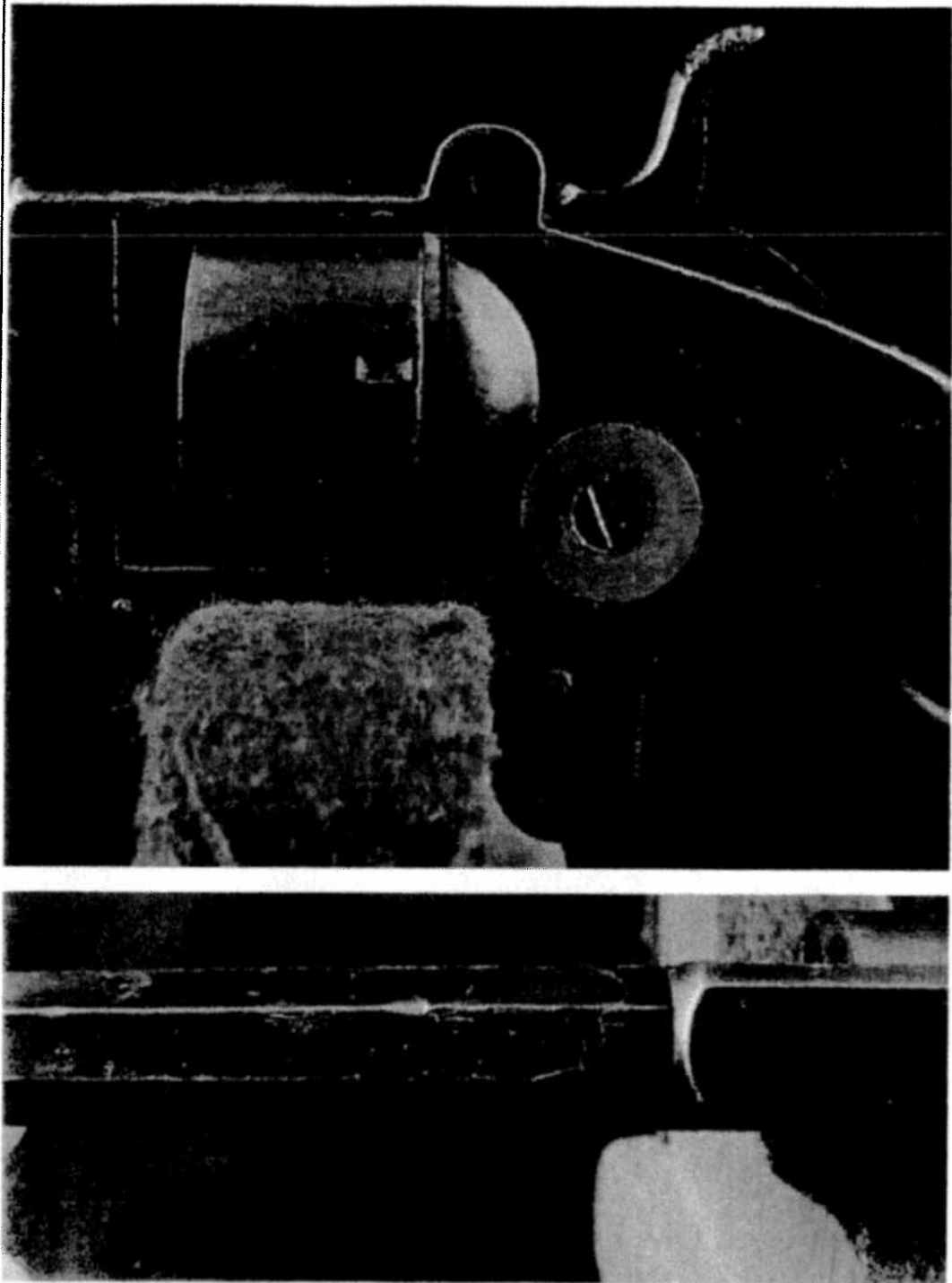
John Kopec
Colt Cavalry Authentication

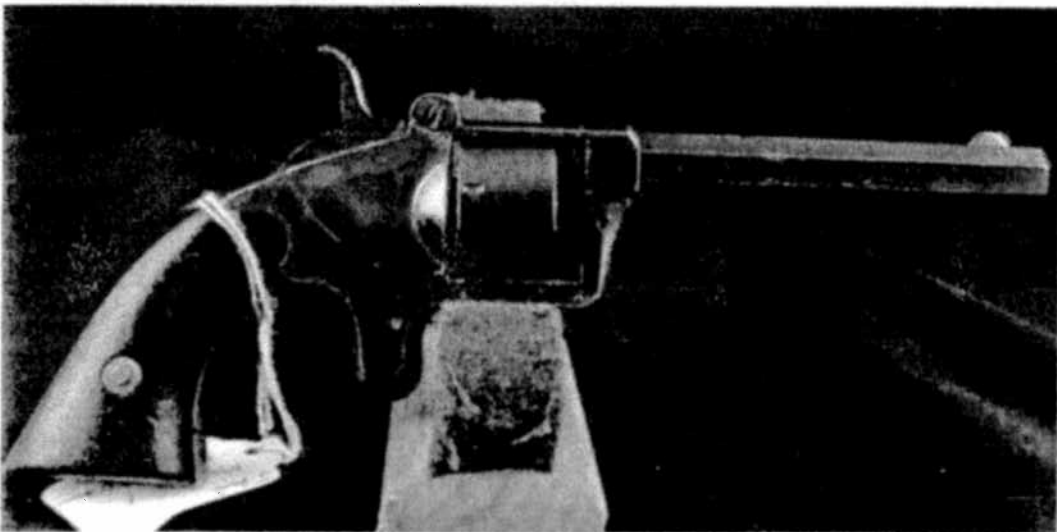
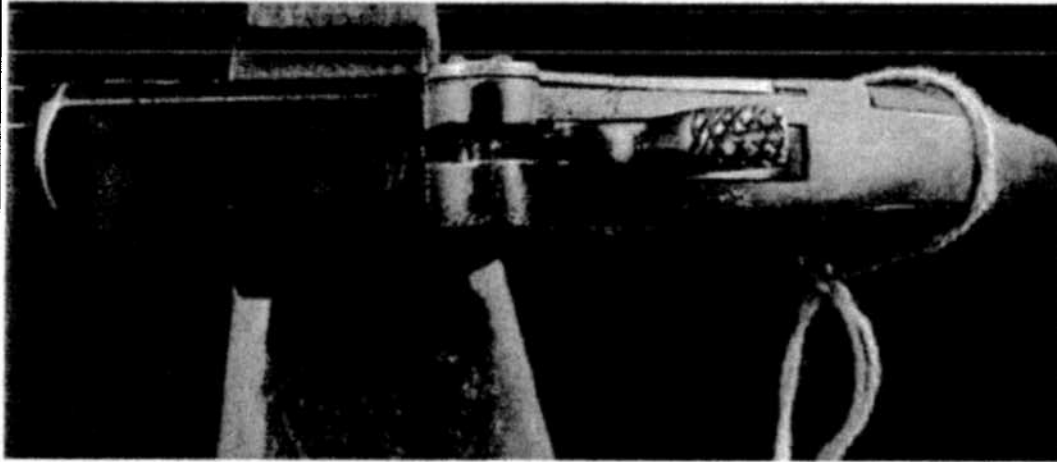
#27

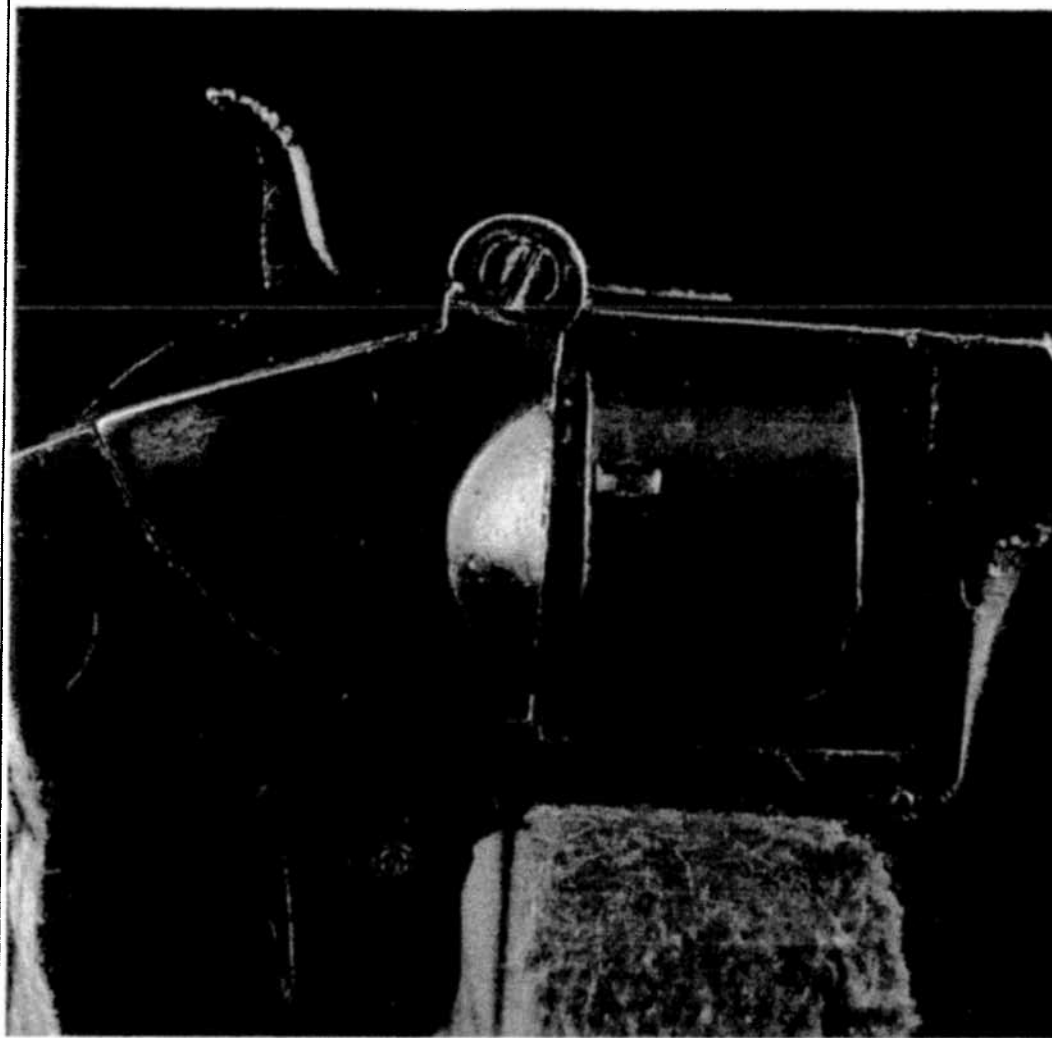
Seller Rules | Bidding History

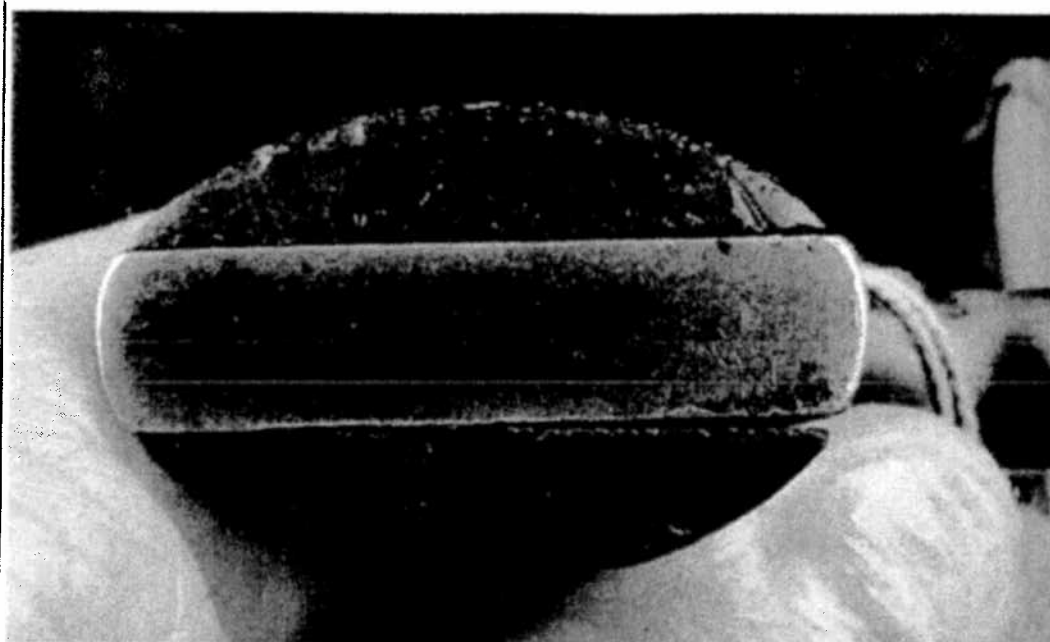
Current February 3, 2009
Time 12:53:02 PM MST

536-0302, J Reid #1, .22 caliber 7 shot, with brass side plate -- Complete Listing	
 Mail It To A Friend	
Category	1866-through-1898-Rim-Fire-Pocket-Revolvers
Item ID	robles-35933
Seller	AntiqueGuns.com (539)
Seller's Location	Salem, UT
Home Page	Auction Home Page
Starting Bid	\$850.00
Buyit Now Price Always higher then reserve	\$1000.00
Quantity Available	1
Auction Ending Date	February 7, 2009 8:05:00 PM MST
Auction Item Description	
<p>536-0302, J Reid #1, .22 caliber 7 shot, with brass side plate that is original. Flayderman's Guide mentions this feature. Mottled brown overall, with patches of fine pinpricks wear and use marks #27, very good overall, very rare.</p> 	









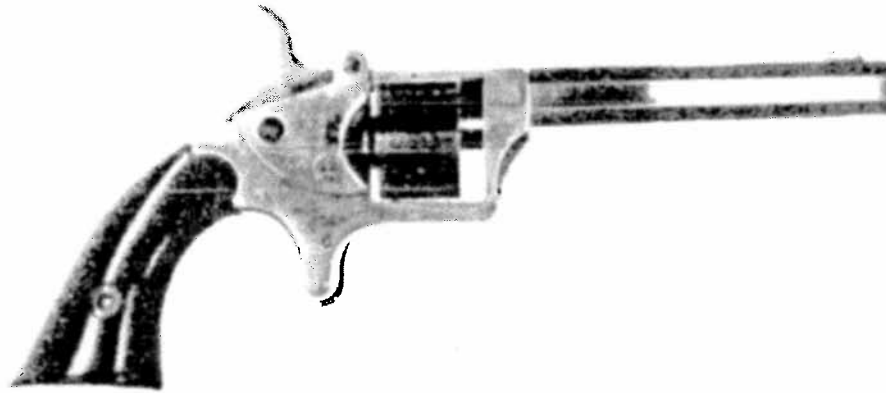
x

x

Bid Status	Reserve Bidding. The minimum opening bid is \$850.00
Place Your Bid Here	
<p style="text-align: center;">Bid Buy Max</p> <p style="text-align: center;">Add To Members Area</p> <p>Member ID</p> <p>Password</p> <p style="text-align: center;"><input type="button" value="Place My Bid"/></p>	<ul style="list-style-type: none"> • The Buyit Now Price will ALWAYS BE HIGHER THAN THE RESERVE If you wait, you might be able to purchase the item for less than the Buyit Now Price. How much less is the gamble, it might be a few dollars, it might be a few hundred dollars. Once the RESERVE is met, the Buyit Now Option will no longer be available. • When bidding, place only numbers in the Bid Entry Box. Example: a bid would be 10 and a 10 cent bid would be 0.10 • A Maximum Bid sets the amount of an automatic increase in your behalf if the bid is raised. This is entirely optional, and in complete confidence. Not available with Quantity Bidding. • You must be a registered bidder to bid. Register Here Change Max Bid Instructions

27

Reid Model 1 Under barrel S/W



Serial Number 283

Richard Wagner Collection

Iron flat sided frame. Circular inspection plate on left side; early production in brass, later changed to iron.

Recoil shield on right side of frame swings upward to allow passage of cartridge cases. Shield secured to frame by screw passing through high "hump" on back of cylinder topstrap. Standard production of rotating shield was in iron with integral circular button. Button rounded, surface checkered. The very early examples have a brass rotating shield without the checkered button. The shield is released for pivoting by exerting pressure on a small projecting spring housed near top rear of recoil shield.

Reid termed this revolver (all variants) as Model One. Refer to D551 (flat topstrap variant) for measurements and comments concerning the basic model.

The "hump" for recoil shield screw was eliminated on the later version, the screw being placed lower in the frame. The change occurred in the area of serial number 1100.

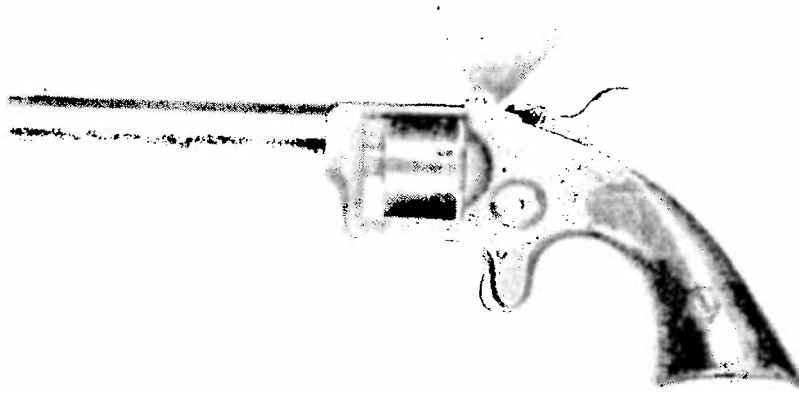
The barrel may be marked in one line from left, in any of the following ways:

J. REID. NEW. YORK
JAMES P. FITCH. N.Y. PHOENIX REVOLVER
HOLEY MFG. CO. LAKEVILLE, CONN.
W. IRVING. 20.CLIFF.S.T N.Y.
(or unmarked)

No brass frame revolvers with hump on cylinder topstrap were made. Examples are known with brass frames in the other two variations. The other variants had a different curvature of hammer nose, and the hammer spur was thicker, lower, and more swept back than found on the "hump" variant

No brass frame revolvers with hump on cylinder topstrap were made. Examples are known with brass frames in the other two variations. The other variants had a different curvature of hammer nose; the hammer spur was thicker, lower, and more swept back than as found on the "hump" variant.

There was no ejector rod of the "hump" variant. A very few of the later variants were made with integral ejector rod on right side.

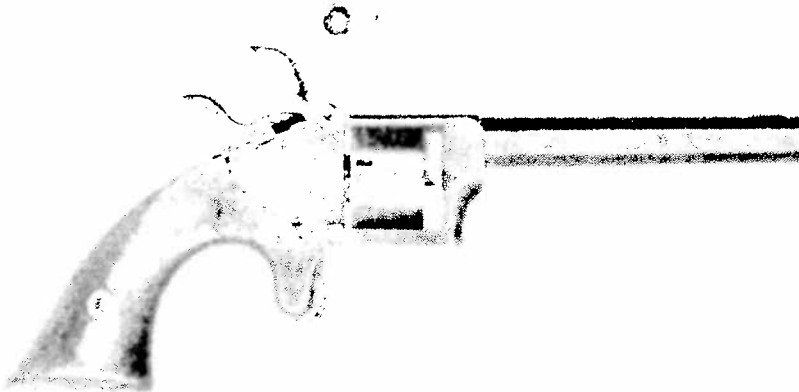


Serial Number 524

Note small circular inspection plate, a feature not found on the later variants.

Serial numbering of all Reid products was within one chronological sequence, all models and variations included. This "hump" variant was numbered in the range of 200 to 2870; the lowest observed being number 241. Taylor G. Bowen, in his excellent book related to Reid firearms, estimates production of this revolver, in all variants, to be approximately 880.

A similar revolver with larger frame in .32 calibre was also made.



Serial Number 283 Description

This Model 1 revolver is nickel plated, with blue octagon barrel and walnut grips. The disassembly of this gun is pretty straight forward. The following is the order of disassembly.

Remove:

Grips

Main Spring

Loading Gate

Access Plate

Hand

Hammer Assembly

Cylinder Lock

Trigger

Barrel

Cylinder Screw

Cylinder

*Disassemble s/w 8/4
and take measurements
following 283
description*

There are many similarities of this early high hump Model 1 to the previously described serial number 27. The measurement of the hammer assembly is .232" thick, and the hammer opening in the top of the frame is .198". Photograph number 283_44 shows the hammer assembly with the hand installed. The hand spring (photo 283_50) rests in a groove cut in the front edge of the hammer. As in serial number 27 this spring needs to be depressed out of the way and the hand can then be inserted into the hammer. The hammer is inserted through the hammer opening in the top of the frame and positioned in such a way that the hand can be inserted through the access hole. The access plate measures .513" in diameter (photo number 283_29) and access plate screw (photo number 283_41). The access plate screw has 6-40 threads. Next we will install the trigger and cylinder lock. These parts are shown in photo number 283_47. The trigger pin measures .079" in diameter and the diameter of the cylinder lock pin is .056". The trigger is installed and held in place by the trigger pin. Serial number 283 does not have a coil spring for the cylinder lock as in serial number 27. This gun has a flat spring with a small curve at one end. See photo number 283_42. Photo number 283_48 shows the revolver assembly thus far. The cylinder measures .660" in length without the ratchet lug extension and .897" with the ratchet lug extension. The cylinder diameter is .967". See cylinder photos 283_19, 283_20, and 283_21. The cylinder pin measures .745" in length and has 1/4"-28 screw threads. Approximately one half of the length of the cylinder pin is unthreaded. This section extends into the front portion of the cylinder and has a diameter of .189". Place the cylinder in the frame and install the cylinder pin through the front of the frame. Now

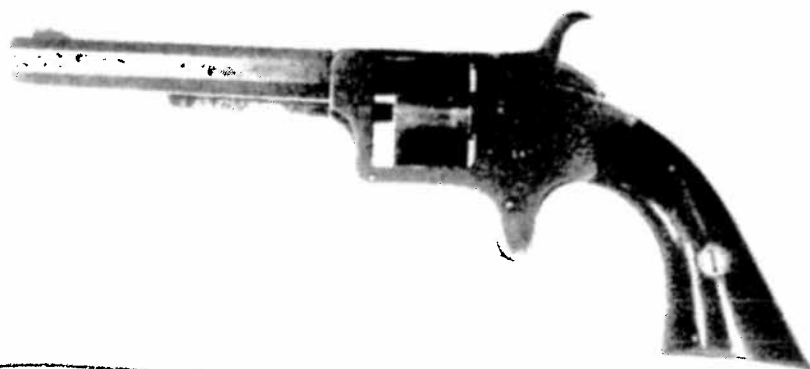
the octagon barrel can be screwed into the frame. The barrel has a blade type silver front sight. The barrel length with the threaded section is 3.460", and the threaded section measures .550" in length. The barrel threads are size 3/8"-32. Most publications list these as 3" or 3-1/4" barrels. It is entirely possible that Reid made different barrel lengths for his Model 1 revolvers. The barrel has three lands and 3 grooves for the rifling. The diameter of the bore is .214" and the diameter of the grooves is .216", barely .002" deep. The rifling has a right hand twist of a little more than one half a turn in 12 inches. The steel loading gate has the knurled hump to aid in the opening and closing. See photo numbers 283_15, 283_16, and 283_17. It is attached to the right side of the frame and hinged by the loading gate screw. See photo number 283_40. Notice the notch cut into the side of this screw. This notch allows the nose of the hammer to pass beneath it. If this is not oriented in exactly the correct position then the hammer nose will not pass under it. The main spring is installed by simply hooking the notched end on the stirrup and the opposite end into the cut out in the frame. See photo number 283_1. Lastly the grips are held in place by the grip screw (photo number 283_38). Take another look at photo 283_1 and you will see a small pin located just behind the main spring cut out. This pin helps to keep the grips in alignment. Photo number 283_49 shows the fully assembled revolver.

Probably the major difference I saw between serial number 27 and serial number 283 is the quality of workmanship. If you compare many of the photographs of the parts of these two revolvers you will see how much better the finishing is on serial number 283. Since serial number 27 is currently the earliest Model 1 revolver known at this point in time, one might speculate that many of the details had not yet been worked out and there was a lot of trial and error. I can just envision one of Reid's workers or maybe even Reid himself filing and fitting each of these parts until it worked just as he thought it should. Economics probably dictated that if it worked as desired then it was ready for sale, and spending more time to do more finishing was just not necessary.

Reid Serial Number List

10/20/08

S/N	Between S/N's	Model	Notes	Reference	Notes/Date Of Manufacture
8		22 cal Single Shot	MARKED W. IRVING	Lustyik	
19	11	Model 1.22 cal Revolver	Steel frame & loading gate	Grimes/Janke	
30	11	Model 1.22 cal Revolver	Single Shot	Grimes/Bowen	1862
35	5	Model 1.22 cal Revolver	High Hump	Bowen	
43	8	22 cal Irving Pistol	Brass Frame Single Shot	Bowen	
50	7	31 cal Irving Pistol	Brass Frame Percussion	Bowen	
52	2	22 cal Irving Pistol		Bowen	
62	10	32 cal Irving Pistol	Single Shot	Bowen	
88	26	32 cal Irving Pistol		Bowen	
149	61	Model 1.22 cal Revolver	High hump	Smith/White	
232	83	Model 1.22 cal Revolver		C W Stagle	\$1250
241	9	Model 1.22 cal Revolver	High Hump	Grimes/Bowen	
283	42	Model 1.22 cal Revolver	High Hump		
333	50	Model 1.22 cal Revolver	High Hump	Janke	
420	87	Model 1.22 cal Revolver		Smith	
534	114	Model 2.32 cal Revolver		Bowen	
577	43	Model 2.32 cal Revolver	High Hump Irving Address	www.a-gun.com	Factory Engraved With Holster
585	8	Model 2.32 cal Revolver	High Hump	Bowen	
615	30	Model 2.32 cal Revolver		Grimes	
763	148	Model 2.32 cal Revolver		Greg Martin	
794	31	Model 2.32 cal Revolver	High Hump	Janke	E Derney engraved on butt
814	20	Model 1.22 cal Revolver	High Hump		
952	138	Model 1.22 cal Revolver	High Hump Stamped Holey Mfg. Co.	Grimes/Bowen	
1035	83	Model 2.32 cal Revolver	High Hump		
1039	4	Model 2.32 cal Revolver	High Hump	White	Marked "Phenix" on barrel
1056	17	Model 2.32 cal Revolver	High Hump	Bowen	
1131	75	Model 2.32 cal Revolver	With Extractor Rod	Bowen	
1193	62	Model 2.32 cal Revolver	Straight Line Frame with Extr Rod		
1217	24	Model 4.32 cal	Ejector missing	Janke	
1284	67	Model 4.32 cal		Grimes	
1294	10	Model 2.32 cal Revolver	Straight Line Frame with Extr Rod	www.a-gun.com	
1298	4	Model 2.32 cal Revolver	Straight Line Frame with Extr Rod		
1302	4	Model 2.32 cal Revolver		Bowen	
1305	3	Model 2.32 cal Revolver	Straight Line Frame with Extr Rod		
1344	39	Model 2.32 cal Revolver	Straight Line Frame with Extr Rod	Smith	
1349	5	Model 2.32 cal Revolver	Straight Line Frame w/o Extr Rod	White	Greg Martin Auction 03/28/06



Serial Number 1493

Richard Wagner Collection

Near end of production in the New York City plant, some revolvers were made with ejector rods mounted on right side. An integral loop was present on right side of frame. An iron rod was inserted in same, held in position (not too well) with a single leaf spring. This arrangement much resembled that on the Drew Patent variant of the Lowell Arms Company revolver (D534). Revolver pictured above has this ejector rod.

Refer to Taylor G. Bowen's book, page 42. Therein is pictured a variation with convex contoured buttstrap and stocks shaped to it. Brass frame, serial number 2643. May be unique, to date no others known with this curvature.

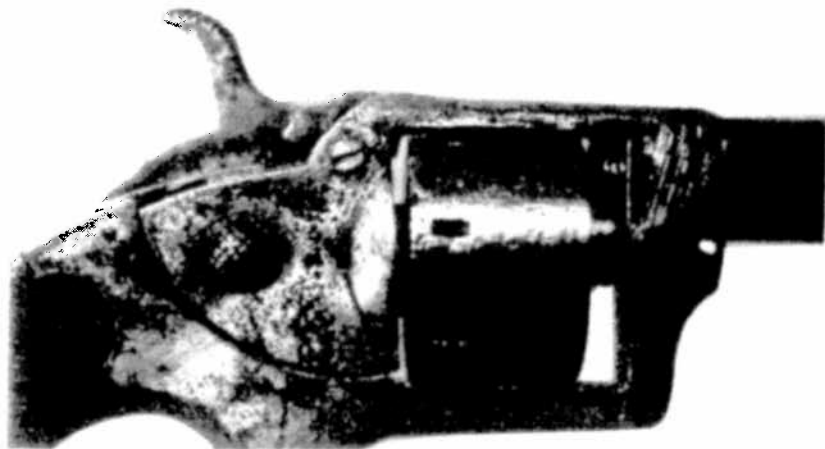
551.1

Slight Swell

551.1

A minor variant exists wherein the "Flat Topstrap" type has a small swell at rear of cylinder topstrap. Produced near end of production only.

Those observed range in serial number sequence from 1862 to 2499. They seem to be quite scarce but, as "swell" is very slight, some examples may have been overlooked and thought to be the common "flat topstrap" variant.



Serial number 2499.

Iron frame was copper, then silver plated. Traces of blue on barrel and cylinder.

S/N	Between S/N's	Model	Notes	Reference	
1353	4	Model 2 .32 cal Revolver	Straight Line Frame with Extr Rod	Grimes/Bowen	Forced Spring In Cylinder Pin
1384	31	Model 4 .32 cal	With Tileston Device	Smith	Error S/N Too Low
1384	0	Model 1 .22 cal Revolver	Straight Line Frame with Extr Rod	Bowen	
1408	24	Model 2 .32 cal Revolver	Straight Line Frame Fitch Phoenix	Unknown	Extractor rod missing
1424	16	Model 1 .22 cal Revolver	Straight Line Frame with Extr Rod	Bowen	Greg Martin Auction 03/28/06
1520	96	Model 2 .32 cal Revolver	Straight Line Frame	Janke	
1602	82	Model 2 .32 cal Revolver		Grimes	
1674	72	Model 2 .32 cal Revolver	Low Oval Hump	Bowen	
1683	9	Model 1 .22 cal Revolver	Straight Line Frame w/o Extr Rod	1	
1696	13	Model 2 .32 cal Revolver	Low Hump Frame with Extr Rod	1	
1808	112	Model 1 .22 cal Revolver		Bowen	
1902	94	Model 3 .32 cal	Iron Frame	Bowen	
1934	32	Model 3 .32 cal	Iron Frame	Bowen	
1956	22	Model 3A .32 cal Revolver	Brass Frame	Bowen	
1958	2				
1960	2	Model 3A .32 cal Revolver	Brass Frame	Bowen	
1973	13	Model 3A .32 cal Revolver	Brass Frame	Bowen	
1995	22	Model 3 .32 cal Revolver	8" Barrel	Bowen	
2055	60	Model 3A .32 cal Revolver		Bowen	
2092	37	Model 3A .32 cal Revolver	Iron Frame	Bowen	
2117	25	Model 3 .32 cal		Bowen	
2147	30	Model 3A .32 cal Revolver		Greg Martin	
2182	35	Model 3A .32 cal Revolver	Frame Has Hammer Hole	Bowen	
2196	14	Model 3A .32 cal Revolver		1	
2265	69	Model 4 .32 cal Revolver		Bowen	
2320	55	Model 4 .32 cal Revolver		Smith	
2338	18	Model 4 .32 cal Revolver	Brass frame w/ loading lever	1	
2343	5	Model 4A .32 cal Revolver		1	
2345	2	Model 4A .32 cal Revolver		Bowen	
2360	15	Model 4A .32 cal Revolver		C.W. Slagle	3-1/2" Barrel
2397	37	Model 1 .22 cal Revolver	Low hump	Grimes/White	
2427	30	Model 1 .22 cal Revolver	8" barrel	Smith	
2499	72	Model 1 .22 cal Revolver	Low Hump	1	
2598	99	Model 4 .31/.32cal Rev.		1	
2643	45	Model 1 .22 cal Revolver	Low Hump Curved Butt	1	
2652	9	Model 2 .32 cal Revolver	Straight Line Frame with Extr Rod	1	
2661	9	Model 3 or 3A or 4 or 4A	Barrel Wrench & Cylinder	Bowen	
2679	18	Model 4 .32 cal Revolver	7-7/8" Barrel Silver Plated	Antique Gun Room	