

## SHIPPING ORDER

From: **AUTO-ORDNANCE CORPORATION**

HARTFORD, CONN.

DATE **May 8, 1939**Ship to **Washington County**Street Address **Att. Henry C. Lawson, Sheriff**City & State **Montpelier, Vermont**ORDER NO. **3672**✓ **1** GUNS **28AC** complete✓ **1** Stocks✓ **3** XX Magazine✓ **1** L “✓ **1** ~~XXXXXX~~ XVIII magazine✓ **1** Cleaning Rods✓ **1** Oilers

Gun Cases

L Magazine Case

C “ “

Five Cell Pocket

PLEASE INSPECT THIS MATERIAL  
IMMEDIATELY. NO CLAIMS  
ALLOWED AFTER 10 DAYS.Wirebound case No. 53 Weight **lbs.**Gun No. **8797**Ship by **Express Collect Val. RSE:JK**Date Shipped **May 10, 1939**

Checked by

## DIRECTIONS FOR LOADING

Type L. and Type C. Drum Magazines  
Thompson Submachine Gun

All magazines are to be kept free from grease or oil on the inside.

Use only caliber .45 pistol ball cartridges (230 or 200 grain bullets).

Place cartridges, bullet up, into spiral track of body, beginning with a full section at mouth.

To do this fill one outer section completely and turn rotor until this section reaches mouth. Continue to fill successive sections until end of spiral track is reached.

Fill each section complete; do not skip any section, and do not fill beyond the spiral track.

Model wind to 9 clicks *only*.

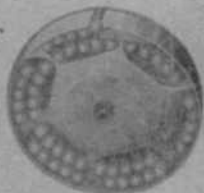
Magazine is to be wound up entirely tight due to the fact that it *must not at anytime* be wound tight with the U. S. Navy Model.

### Type C. Drum Magazine

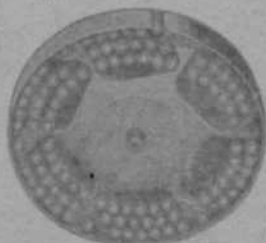
The Type C. Drum magazine *will not* function properly on the U. S. Navy Model and therefore *must not be used* with the U. S. Navy Model.

In Type C. magazines place a cartridge in each of four fingers immediately preceding mouth of magazine to obtain capacity of one hundred.

The train of cartridges should move freely in the spiral track. After the magazine is properly filled replace the cover and key and wind to the number of clicks indicated on magazine name plate.



Type L. Magazine  
(50 Car.)



Type C. Magazine  
(100 Car.)